

A20329

Leader in Biomolecular Solutions for Life Science



MOC1 Rabbit pAb

Catalog No.: A20329

Basic Information

Observed MW

50kDa

Calculated MW

46kDa

Category

Polyclonal Antibody

Applications

WB,ELISA

Cross-Reactivity

Oryza sativa

Background

Putative transcription regulator that controls rice tillering by initiating axillary buds and promoting their outgrowth. Rice tiller is a specialized grain-bearing branch that is formed on the unelongated basal internode and grows independently of the mother stem (culm) by means of its own adventitious roots.

Recommended Dilutions

WB 1:500 - 1:2000

ELISA Recommended starting concentration is 1 µg/mL. Please optimize the concentration based on your specific assay requirements.

Immunogen Information

Gene ID

107278653

Swiss Prot

Q84MM9

Immunogen

Synthetic peptide. This information is considered to be commercially sensitive.

Synonyms

MOC1

Contact

 www.abclonal.com

Product Information

Source

Rabbit

Isotype

IgG

Purification

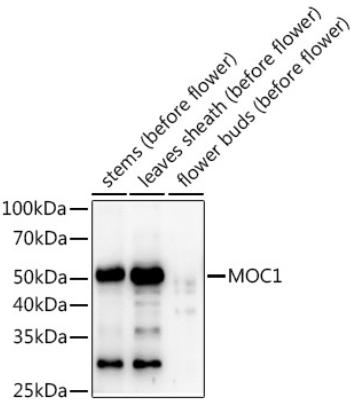
Affinity purification

Storage

Store at -20°C. Avoid freeze / thaw cycles.

Buffer: PBS with 0.01% thimerosal, 50% glycerol, pH7.3.

Validation Data



Western blot analysis of extracts of various tissues from the japonica rice (*Oryza sativa* L.) variety Zhonghua 11, using MOC1 Rabbit pAb (A20329) at 1:1000 dilution.
Secondary antibody: HRP-conjugated Goat anti-Rabbit IgG (H+L) (AS014) at 1:10000 dilution.
Lysates/proteins: 25µg per lane.
Blocking buffer: 3% nonfat dry milk in TBST.
Detection: ECL Enhanced Kit (RM00021).
Exposure time: 60s.