

A20613

Leader in Biomolecular Solutions for Life Science



HCoV-HKU1 Spike S1 Rabbit pAb

Catalog No.: A20613

Basic Information

Observed MW

75kDa/110kDa/145kDa

Calculated MW

152kDa

Category

Polyclonal Antibody

Applications

WB, ELISA

Cross-Reactivity

HCoV-HKU1

Background

[Spike protein S1]: attaches the virion to the cell membrane by interacting with host receptor, initiating the infection.

Recommended Dilutions

WB 1:100 - 1:500

ELISA Recommended starting concentration is 1 µg/mL. Please optimize the concentration based on your specific assay requirements.

Immunogen Information

Gene ID

3200426

Swiss Prot

Q5MQD0

Immunogen

Synthetic peptide. This information is considered to be commercially sensitive.

Synonyms

Contact



www.abclonal.com

Product Information

Source

Rabbit

Isotype

IgG

Purification

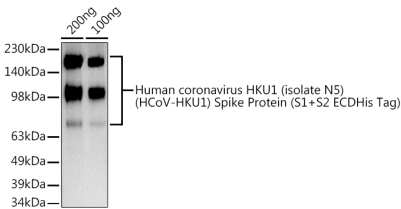
Affinity purification

Storage

Store at -20°C. Avoid freeze / thaw cycles.

Buffer: PBS containing 50% glycerol, preserved with proclin300 or sodium azide (as specified on the Certificate of Analysis), pH 7.3.

Validation Data



Western blot analysis of lysates from Human coronavirus HKU1 (isolate N5) (HCoV-HKU1) Spike Protein (S1+S2 ECDHis Tag), using HCoV-HKU1 Spike S1 Rabbit pAb (A20613) at 1:500 dilution. Secondary antibody: HRP-conjugated Goat anti-Rabbit IgG (H+L) (AS014) at 1:10000 dilution. Lysates/proteins: 25µg per lane. Blocking buffer: 3% nonfat dry milk in TBST. Detection: ECL Basic Kit (RM00020). Exposure time: 180s.