

A20615

Leader in Biomolecular Solutions for Life Science



HCoV-OC43 Spike S1 Rabbit pAb

Catalog No.: A20615

Basic Information

Observed MW

110kDa/145kDa

Calculated MW

150kDa

Category

Polyclonal Antibody

Applications

WB,ELISA

Cross-Reactivity

HCoV-OC43

Background

S1 attaches the virion to the cell membrane by interacting with sialic acid-containing cell receptors, initiating the infection.; [Spike protein S1]: attaches the virion to the cell membrane by interacting with host receptor, initiating the infection.

Recommended Dilutions

WB 1:500 - 1:1000

ELISA Recommended starting concentration is 1 µg/mL. Please optimize the concentration based on your specific assay requirements.

Immunogen Information

Gene ID

39105218

Swiss Prot

P36334

Immunogen

Synthetic peptide. This information is considered to be commercially sensitive.

Synonyms

Contact

 www.abclonal.com

Product Information

Source

Rabbit

Isotype

IgG

Purification

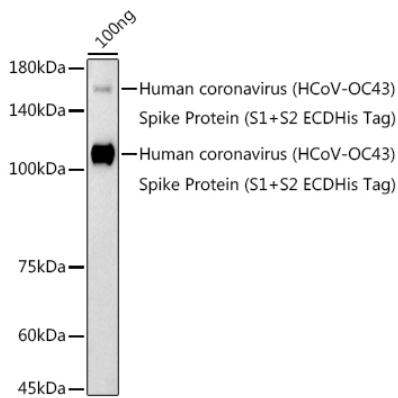
Affinity purification

Storage

Store at -20°C. Avoid freeze / thaw cycles.

Buffer: PBS with 0.09% Sodium azide,50% glycerol,pH7.3.

Validation Data



Western blot analysis of lysates from Human coronavirus (HCoV-OC43) Spike Protein (S1+S2 ECDHis Tag), using HCoV-OC43 Spike S1 Rabbit pAb (A20615) at 1:1000 dilution.
Secondary antibody: HRP-conjugated Goat anti-Rabbit IgG (H+L) (AS014) at 1:10000 dilution.
Lysates/proteins: 25µg per lane.
Blocking buffer: 3% nonfat dry milk in TBST.
Detection: ECL Enhanced Kit (RM00021).
Exposure time: 180s.