

A20812

Leader in Biomolecular Solutions for Life Science



Timm29 Rabbit pAb

Catalog No.: A20812

Basic Information

Observed MW

29kDa

Calculated MW

29kDa

Category

Polyclonal Antibody

Applications

WB,IP,ELISA

Cross-Reactivity

Human,Mouse

Background

Predicted to enable protein transporter activity. Predicted to be involved in protein insertion into mitochondrial inner membrane. Predicted to act upstream of or within protein transport. Predicted to be located in mitochondrial inner membrane and mitochondrial intermembrane space. Predicted to be part of TIM22 mitochondrial import inner membrane insertion complex. Orthologous to human TIMM29 (translocase of inner mitochondrial membrane 29).

Recommended Dilutions

WB 1:500 - 1:1000

IP 0.5µg-4µg antibody for
200µg-400µg extracts
of whole cells

ELISA Recommended starting
concentration is 1
µg/mL. Please optimize
the concentration
based on your specific
assay requirements.

Immunogen Information

Gene ID

69773

Swiss Prot

Q8BGX2

Immunogen

Recombinant protein (or fragment). This information is considered to be commercially sensitive.

Synonyms

TIM29; 1810026J23Rik; Timm29

Product Information

Source

Rabbit

Isotype

IgG

Purification

Affinity purification

Storage

Store at -20°C. Avoid freeze / thaw cycles.

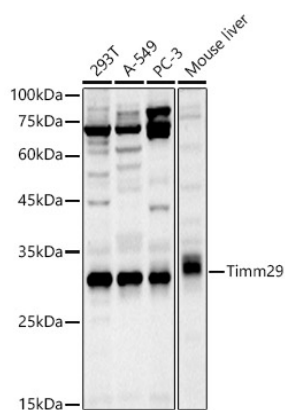
Buffer: PBS containing 50% glycerol, preserved with proclin300 or sodium azide (as specified on the Certificate of Analysis), pH 7.3.

Contact



www.abclonal.com

Validation Data



Western blot analysis of various lysates using Timm29 Rabbit pAb (A20812) at 1:1000 dilution.

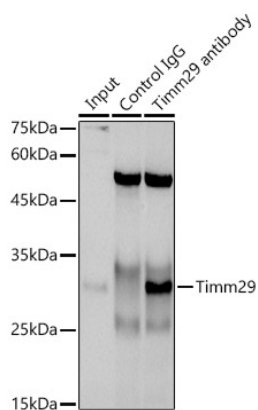
Secondary antibody: HRP-conjugated Goat anti-Rabbit IgG (H+L) (AS014) at 1:10000 dilution.

Lysates/proteins: 25µg per lane.

Blocking buffer: 3% nonfat dry milk in TBST.

Detection: ECL Basic Kit (RM00020).

Exposure time: 120s.



Immunoprecipitation analysis of 300 µg extracts of A-549 cells using 3 µg Timm29 antibody (A20812). Western blot was performed from the immunoprecipitate using Timm29 antibody (A20812) at a dilution of 1:1000.