

A20918

Leader in Biomolecular Solutions for Life Science



OXGR1 / GPR99 Rabbit mAb

Catalog No.: A20918

Recombinant

Basic Information

Observed MW

40kDa

Calculated MW

38kDa

Category

SMab Recombinant Monoclonal
Antibody

Applications

WB,IF/ICC,ELISA

Cross-Reactivity

Human,Mouse,Rat

CloneNo number

ARC2892

Background

This gene encodes a G protein-coupled receptor (GPCR) that belongs to the oxoglutarate receptor family within the GPCR superfamily. The encoded protein is activated by the citric acid intermediate, oxoglutarate, as well as several cysteinyl leukotrienes, including leukotrienes E4, C4 and D4, which are implicated in many inflammatory disorders. In mice, a knock-out of this gene leads to middle ear inflammation, changes in the mucosal epithelium, and an increase in fluid behind the eardrum, and is associated with hearing loss. Alternative splicing results in multiple transcript variants.

Recommended Dilutions

WB 1:500 - 1:1000

IF/ICC 1:50 - 1:200

ELISA Recommended starting concentration is 1 µg/mL. Please optimize the concentration based on your specific assay requirements.

Immunogen Information

Gene ID

27199

Swiss Prot

Q96P68

Immunogen

Synthetic peptide. This information is considered to be commercially sensitive.

Synonyms

aKGR; GPR80; GPR99; P2Y15; P2RY15; OXGR1 / GPR99

Contact

 www.abclonal.com

Product Information

Source

Rabbit

Isotype

IgG

Purification

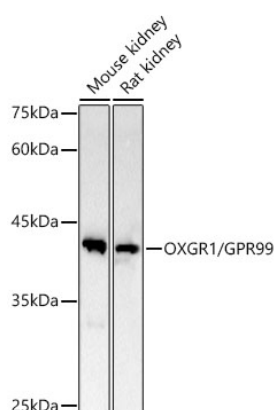
Affinity purification

Storage

Store at -20°C. Avoid freeze / thaw cycles.

Buffer: PBS with 0.02% sodium azide,0.05% BSA,50% glycerol,pH7.3.

Validation Data



Western blot analysis of various lysates using OXGR1 / GPR99 Rabbit mAb (A20918) at 1:1000 dilution.

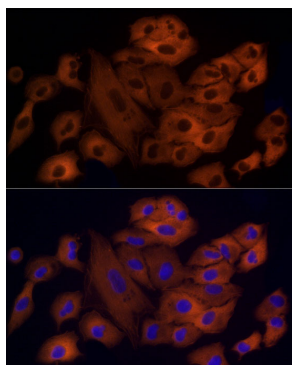
Secondary antibody: HRP-conjugated Goat anti-Rabbit IgG (H+L) (AS014) at 1:10000 dilution.

Lysates/proteins: 25µg per lane.

Blocking buffer: 3% nonfat dry milk in TBST.

Detection: ECL Basic Kit (RM00020).

Exposure time: 60s.



Immunofluorescence analysis of A-549 cells using OXGR1 / GPR99 Rabbit mAb (A20918) at dilution of 1:50 (40x lens). Secondary antibody: Cy3-conjugated Goat anti-Rabbit IgG (H+L) (AS007) at 1:500 dilution. Blue: DAPI for nuclear staining.