

A20928

Leader in Biomolecular Solutions for Life Science



KIF5B Rabbit mAb

Catalog No.: A20928

Recombinant

1 Publications

Basic Information

Observed MW

120kDa

Calculated MW

110kDa

Category

SMab Recombinant Monoclonal
Antibody

Applications

WB,IF/ICC,ELISA

Cross-Reactivity

Human,Mouse,Rat

CloneNo number

ARC2904

Background

Enables identical protein binding activity; microtubule binding activity; and microtubule motor activity. Involved in several processes, including lysosome localization; natural killer cell mediated cytotoxicity; and positive regulation of protein localization to plasma membrane. Located in centriolar satellite; cytosol; and vesicle.

Recommended Dilutions

WB 1:1000 - 1:5000

IF/ICC 1:50 - 1:200

ELISA Recommended starting concentration is 1 µg/mL. Please optimize the concentration based on your specific assay requirements.

Immunogen Information

Gene ID

3799

Swiss Prot

P33176

Immunogen

A synthetic peptide corresponding to a sequence within amino acids 1-100 of human KIF5B (NP_004512.1).

Synonyms

KNS; KINH; KNS1; UKHC; HEL-S-61; KIF5B

Contact

 www.abclonal.com

Product Information

Source

Rabbit

Isotype

IgG

Purification

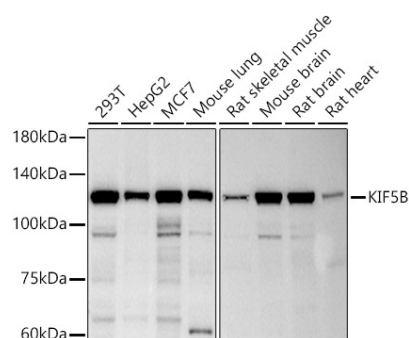
Affinity purification

Storage

Store at -20°C. Avoid freeze / thaw cycles.

Buffer: PBS with 0.02% sodium azide,0.05% BSA,50% glycerol,pH7.3.

Validation Data



Western blot analysis of various lysates using KIF5B Rabbit mAb (A20928) at 1:500 dilution.

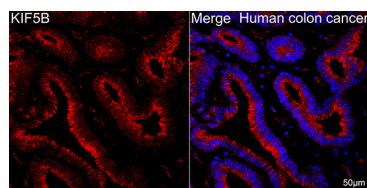
Secondary antibody: HRP-conjugated Goat anti-Rabbit IgG (H+L) (AS014) at 1:10000 dilution.

Lysates/proteins: 25µg per lane.

Blocking buffer: 3% nonfat dry milk in TBST.

Detection: ECL Basic Kit (RM00020).

Exposure time: 3s.



Confocal imaging of paraffin-embedded Human colon cancer tissue using KIF5B Rabbit mAb (A20928, dilution 1:100) followed by a further incubation with Cy3 Goat Anti-Rabbit IgG (H+L) (AS007, dilution 1:500) (Red). DAPI was used for nuclear staining (Blue). Objective: 40x. Perform high pressure antigen retrieval with 0.01 M citrate buffer (pH 6.0) prior to IF staining.