

A21173

Leader in Biomolecular Solutions for Life Science



## [KO Validated] PDK1/PDPK1 Rabbit mAb

Catalog No.: A21173

**KO** Validated

Recombinant

### Basic Information

#### Observed MW

58-68kDa/

#### Calculated MW

63kDa

#### Category

SMab Recombinant Monoclonal  
Antibody

#### Applications

WB,IF/ICC,ELISA

#### Cross-Reactivity

Mouse,Rat

#### CloneNo number

ARC52386

### Background

Enables 3-phosphoinositide-dependent protein kinase activity; phospholipase activator activity; and phospholipase binding activity. Involved in several processes, including cell surface receptor signaling pathway; regulation of protein kinase activity; and regulation of signal transduction. Acts upstream of or within intracellular signal transduction. Located in cell projection; cytosol; and plasma membrane. Implicated in prostate cancer. Biomarker of lung non-small cell carcinoma.

### Recommended Dilutions

**WB** 1:500-1:1000

**IF/ICC** 1:100-1:500

**ELISA** Recommended starting concentration is 1 µg/mL. Please optimize the concentration based on your specific assay requirements.

### Immunogen Information

#### Gene ID

5170

#### Swiss Prot

O15530

#### Immunogen

Synthetic peptide. This information is considered to be commercially sensitive.

#### Synonyms

PDK1; PDPK2; PDPK2P; PRO0461; K1

### Contact

 [www.abclonal.com](http://www.abclonal.com)

### Product Information

#### Source

Rabbit

#### Isotype

IgG

#### Purification

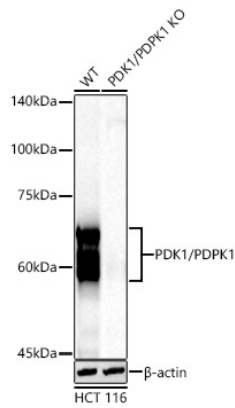
Affinity purification

#### Storage

Store at -20°C. Avoid freeze / thaw cycles.

Buffer: PBS with 0.05% proclin300,0.05% BSA,50% glycerol,pH7.3.

## Validation Data



Western blot analysis of lysates from wild type (WT) and PDK1/PDPK1 knockout (KO) HCT 116 cells using [KO Validated] PDK1/PDPK1 Rabbit mAb (A21173) at 1:1000 dilution incubated overnight at 4°C.

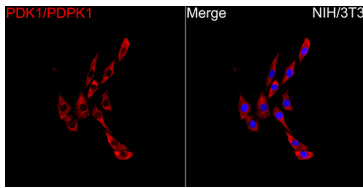
Secondary antibody: HRP-conjugated Goat anti-Rabbit IgG (H+L) (AS014) at 1:10000 dilution.

Lysates/proteins: 25 µg per lane.

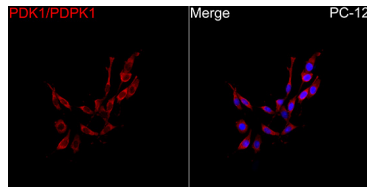
Blocking buffer: 3% nonfat dry milk in TBST.

Detection: ECL Basic Kit (RM00020).

Exposure time: 45s.



Immunofluorescence analysis of NIH/3T3 cells using [KO Validated] PDK1/PDPK1 Rabbit mAb (A21173) at a dilution of 1:200 (40x lens). Secondary antibody: Cy3-conjugated Goat anti-Rabbit IgG (H+L) (AS007) at 1:500 dilution. Blue: DAPI for nuclear staining.



Immunofluorescence analysis of PC-12 cells using [KO Validated] PDK1/PDPK1 Rabbit mAb (A21173) at a dilution of 1:200 (40x lens). Secondary antibody: Cy3-conjugated Goat anti-Rabbit IgG (H+L) (AS007) at 1:500 dilution. Blue: DAPI for nuclear staining.