

A21189

Leader in Biomolecular Solutions for Life Science



SYPL1 Rabbit pAb

Catalog No.: A21189

Basic Information

Observed MW

Refer to figures

Calculated MW

29kDa

Category

Polyclonal Antibody

Applications

IF/ICC,ELISA

Cross-Reactivity

Human

Background

Predicted to be involved in chemical synaptic transmission. Located in extracellular exosome.

Recommended Dilutions

IF/ICC 1:50 - 1:200

ELISA Recommended starting concentration is 1 µg/mL. Please optimize the concentration based on your specific assay requirements.

Immunogen Information

Gene ID

6856

Swiss Prot

Q16563

Immunogen

Recombinant protein (or fragment). This information is considered to be commercially sensitive.

Synonyms

SYPL; H-SP1; SYPL1

Contact



www.abclonal.com

Product Information

Source

Rabbit

Isotype

IgG

Purification

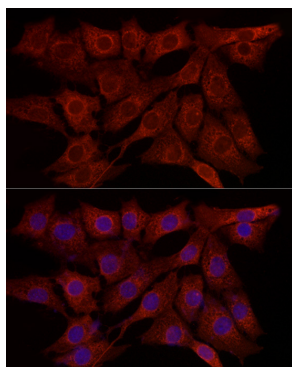
Affinity purification

Storage

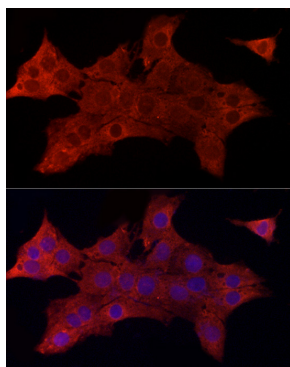
Store at -20°C. Avoid freeze / thaw cycles.

Buffer: PBS with 0.05% proclin300,50% glycerol,pH7.3.

Validation Data



Immunofluorescence analysis of NIH/3T3 cells using SYPL1 Rabbit pAb (A21189) at dilution of 1:50 (40x lens). Secondary antibody: Cy3-conjugated Goat anti-Rabbit IgG (H+L) (AS007) at 1:500 dilution. Blue: DAPI for nuclear staining.



Immunofluorescence analysis of PC-12 cells using SYPL1 Rabbit pAb (A21189) at dilution of 1:50 (40x lens). Secondary antibody: Cy3-conjugated Goat anti-Rabbit IgG (H+L) (AS007) at 1:500 dilution. Blue: DAPI for nuclear staining.