

A21190

Leader in Biomolecular Solutions for Life Science



# Phospho-POLR2A CTD-T4 Rabbit pAb

Catalog No.: A21190

## Basic Information

### Observed MW

250kDa

### Calculated MW

217kDa

### Category

Polyclonal Antibody

### Applications

WB,IP,ChIP,ELISA

### Cross-Reactivity

Human,Mouse,Rat

## Background

This gene encodes the largest subunit of RNA polymerase II, the polymerase responsible for synthesizing messenger RNA in eukaryotes. The product of this gene contains a carboxy terminal domain composed of heptapeptide repeats that are essential for polymerase activity. These repeats contain serine and threonine residues that are phosphorylated in actively transcribing RNA polymerase. In addition, this subunit, in combination with several other polymerase subunits, forms the DNA binding domain of the polymerase, a groove in which the DNA template is transcribed into RNA.

## Recommended Dilutions

**WB** 1:500 - 1:1000

**IP** 0.5µg-4µg antibody for  
200µg-400µg extracts  
of whole cells

**ELISA** Recommended starting  
concentration is 1  
µg/mL. Please optimize  
the concentration  
based on your specific  
assay requirements.

**ChIP** 5µg antibody for  
10µg-15µg of  
Chromatin

## Immunogen Information

### Gene ID

5430

### Swiss Prot

P24928

### Immunogen

Synthetic peptide. This information is considered to be commercially sensitive.

### Synonyms

RPB1; RPO2; POLR2; POLRA; RPBh1; RPOL2; NEDHIB; RpILS; hsRPB1; hRPB220;  
Phospho-POLR2A CTD-T4

## Product Information

### Source

Rabbit

### Isotype

IgG

### Purification

Affinity purification

### Storage

Store at -20°C. Avoid freeze / thaw cycles.

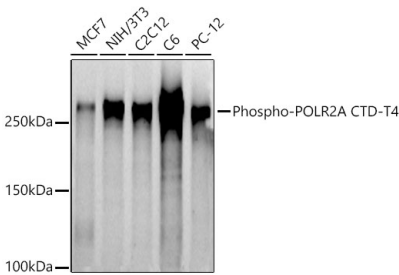
Buffer: PBS containing 50% glycerol, preserved with proclin300 or sodium azide (as specified on the Certificate of Analysis), pH 7.3.

## Contact

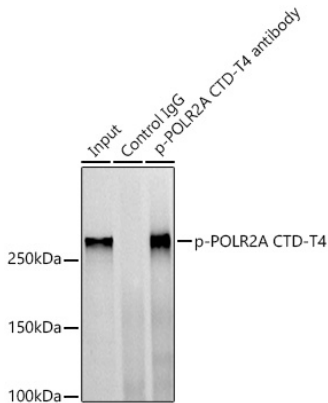


[www.abclonal.com](http://www.abclonal.com)

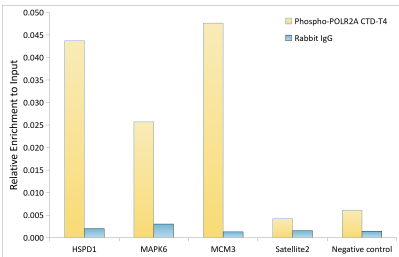
Validation Data



Western blot analysis of various lysates using Phospho-POLR2A CTD-T4 Rabbit pAb (A21190) at 1:1000 dilution.  
Secondary antibody: HRP-conjugated Goat anti-Rabbit IgG (H+L) (AS014) at 1:10000 dilution.  
Lysates/proteins: 25µg per lane.  
Blocking buffer: 3% nonfat dry milk in TBST.  
Detection: ECL Basic Kit (RM00020).  
Exposure time: 90s.



Immunoprecipitation analysis of 300 µg extracts of C6 cells using 3 µg Phospho-POLR2A CTD-T4 antibody (A21190). Western blot was performed from the immunoprecipitate using Phospho-POLR2A (Thr4) antibody (A21190) at a dilution of 1:1000.



Chromatin immunoprecipitation analysis of extracts of 293T cells, using Phospho-POLR2A CTD-T4 antibody (A21190) and rabbit IgG. The amount of immunoprecipitated DNA was checked by quantitative PCR. Histogram was constructed by the ratios of the immunoprecipitated DNA to the input.