

A2144

Leader in Biomolecular Solutions for Life Science



MALT1 Rabbit pAb

Catalog No.: A2144

2 Publications

Basic Information

Observed MW

102kDa

Calculated MW

92kDa

Category

Polyclonal Antibody

Applications

WB,IF/ICC,ELISA

Cross-Reactivity

Human,Mouse,Rat

Background

This gene encodes a caspase-like protease that plays a role in BCL10-induced activation of NF-kappaB. The protein is a component of the CARMA1-BCL10-MALT1 (CBM) signalosome that triggers NF-kappaB signaling and lymphocyte activation following antigen-receptor stimulation. Mutations in this gene result in immunodeficiency 12 (IMD12). This gene has been found to be recurrently rearranged in chromosomal translocations with other genes in mucosa-associated lymphoid tissue lymphomas, including a t(11;18)(q21;q21) translocation with the baculoviral IAP repeat-containing protein 3 (also known as apoptosis inhibitor 2) locus [BIRC3(API2)-MALT1], and a t(14;18)(q32;q21) translocation with the immunoglobulin heavy chain locus (IGH-MALT1). Alternatively spliced transcript variants have been described for this gene.

Recommended Dilutions

WB 1:500 - 1:2000

IF/ICC 1:50 - 1:200

ELISA Recommended starting concentration is 1 µg/mL. Please optimize the concentration based on your specific assay requirements.

Immunogen Information

Gene ID

10892

Swiss Prot

Q9UDY8

Immunogen

Recombinant protein (or fragment). This information is considered to be commercially sensitive.

Synonyms

MLT; MLT1; IMD12; PCASP1; MALT1

Contact

 www.abclonal.com

Product Information

Source

Rabbit

Isotype

IgG

Purification

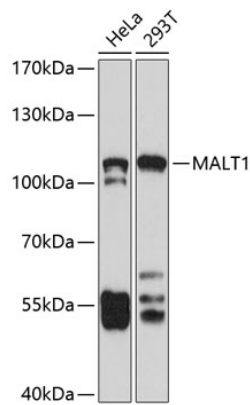
Affinity purification

Storage

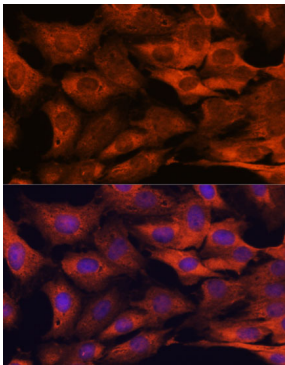
Store at -20°C. Avoid freeze / thaw cycles.

Buffer: PBS with 0.09% Sodium azide, 50% glycerol, pH7.3.

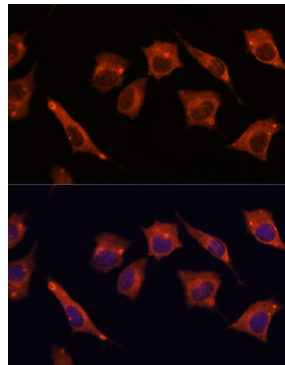
Validation Data



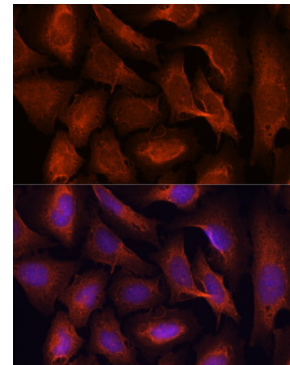
Western blot analysis of various lysates using MALT1 Rabbit pAb (A2144) at 1:1000 dilution.
Secondary antibody: HRP-conjugated Goat anti-Rabbit IgG (H+L) (AS014) at 1:10000 dilution.
Lysates/proteins: 25µg per lane.
Blocking buffer: 3% nonfat dry milk in TBST.
Detection: ECL Basic Kit (RM00020).
Exposure time: 90s.



Immunofluorescence analysis of C6 cells using MALT1 Rabbit pAb (A2144) at dilution of 1:100. Secondary antibody: Cy3-conjugated Goat anti-Rabbit IgG (H+L) (AS007) at 1:500 dilution. Blue: DAPI for nuclear staining.



Immunofluorescence analysis of L929 cells using MALT1 Rabbit pAb (A2144) at dilution of 1:100. Secondary antibody: Cy3-conjugated Goat anti-Rabbit IgG (H+L) (AS007) at 1:500 dilution. Blue: DAPI for nuclear staining.



Immunofluorescence analysis of U-2 OS cells using MALT1 Rabbit pAb (A2144) at dilution of 1:100. Secondary antibody: Cy3-conjugated Goat anti-Rabbit IgG (H+L) (AS007) at 1:500 dilution. Blue: DAPI for nuclear staining.