

A2153

Leader in Biomolecular Solutions for Life Science



SPDYA Rabbit pAb

Catalog No.: A2153

Basic Information

Observed MW

48kDa

Calculated MW

36kDa

Category

Polyclonal Antibody

Applications

WB,ELISA

Cross-Reactivity

Human,Mouse,Rat

Background

Enables protein kinase activator activity and protein kinase binding activity. Involved in several processes, including G1/S transition of mitotic cell cycle; positive regulation of cell population proliferation; and positive regulation of protein kinase activity. Located in nucleoplasm.

Recommended Dilutions

WB 1:500 - 1:2000

ELISA Recommended starting concentration is 1 µg/mL. Please optimize the concentration based on your specific assay requirements.

Immunogen Information

Gene ID

245711

Swiss Prot

Q5MJ70

Immunogen

Recombinant protein (or fragment). This information is considered to be commercially sensitive.

Synonyms

SPY1; SPDY1; RINGO3; RINGOA; SPDYA

Contact

 www.abclonal.com

Product Information

Source

Rabbit

Isotype

IgG

Purification

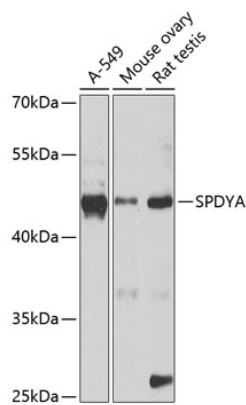
Affinity purification

Storage

Store at -20°C. Avoid freeze / thaw cycles.

Buffer: PBS with 0.02% sodium azide, 50% glycerol, pH7.3.

Validation Data



Western blot analysis of various lysates using SPDYA Rabbit pAb (A2153) at 1:1000 dilution.
Secondary antibody: HRP-conjugated Goat anti-Rabbit IgG (H+L) (AS014) at 1:10000 dilution.
Lysates/proteins: 25µg per lane.
Blocking buffer: 3% nonfat dry milk in TBST.
Detection: ECL Enhanced Kit (RM00021).
Exposure time: 10s.