

A21972

Leader in Biomolecular Solutions for Life Science



# Alpha-1 Antitrypsin (SERPINA1) Rabbit mAb

Catalog No.: A21972

Recombinant

## Basic Information

### Observed MW

Refer to figures

### Calculated MW

47kDa

### Category

SMab Recombinant Monoclonal  
Antibody

### Applications

IF/ICC, ELISA

### Cross-Reactivity

Human

### CloneNo number

ARC54184

## Background

The protein encoded by this gene is a serine protease inhibitor belonging to the serpin superfamily whose targets include elastase, plasmin, thrombin, trypsin, chymotrypsin, and plasminogen activator. This protein is produced in the liver, the bone marrow, by lymphocytic and monocytic cells in lymphoid tissue, and by the Paneth cells of the gut. Defects in this gene are associated with chronic obstructive pulmonary disease, emphysema, and chronic liver disease. Several transcript variants encoding the same protein have been found for this gene.

## Recommended Dilutions

IF/ICC 1:50 - 1:200

ELISA Recommended starting concentration is 1 µg/mL. Please optimize the concentration based on your specific assay requirements.

## Immunogen Information

### Gene ID

5265

### Swiss Prot

P01009

### Immunogen

Recombinant protein (or fragment). This information is considered to be commercially sensitive.

### Synonyms

PI; A1A; AAT; PI1; A1AT; nNIF; PRO2275; alpha1AT; Alpha-1 Antitrypsin (SERPINA1)

## Contact

 [www.abclonal.com](http://www.abclonal.com)

## Product Information

### Source

Rabbit

### Isotype

IgG

### Purification

Affinity purification

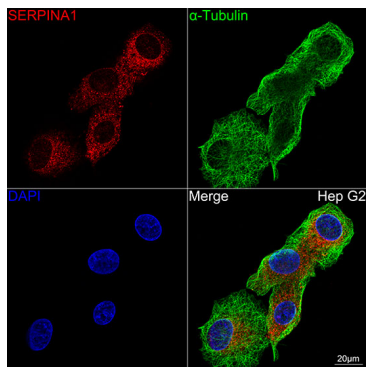
### Storage

Store at -20°C. Avoid freeze / thaw cycles.

Buffer: PBS containing 50% glycerol and 0.05% BSA, preserved with proclin300 or sodium azide (as specified on the Certificate of Analysis), pH 7.3.

## Validation Data

---



Confocal imaging of Hep G2 cells using Alpha-1 Antitrypsin (SERPINA1) Rabbit mAb (A21972, at dilution of 1:100) (Red). The cells were counterstained with  $\alpha$ -Tubulin Mouse mAb (AC012, dilution 1:400) (Green). DAPI was used for nuclear staining (blue). Objective: 100x.