

A21986NFB

Leader in Biomolecular Solutions for Life Science



CXCL10/IP-10 Rabbit mAb

Catalog No.: A21986NFB

Recombinant

Basic Information

Observed MW

11kDa

Calculated MW

11kDa

Category

SMab Recombinant Monoclonal
Antibody

Applications

WB,IHC-P,IP,ELISA

Cross-Reactivity

Human,Mouse,Rat

CloneNo number

ARC5116-05

Background

This antimicrobial gene encodes a chemokine of the CXC subfamily and ligand for the receptor CXCR3. Binding of this protein to CXCR3 results in pleiotropic effects, including stimulation of monocytes, natural killer and T-cell migration, and modulation of adhesion molecule expression. This gene may also be a key regulator of the 'cytokine storm' immune response to SARS-CoV-2 infection.

Recommended Dilutions

WB 1:2000 - 1:10000

IHC-P 1:50 - 1:200

IP 1:50 - 1:200

ELISA Recommended starting concentration is 1 µg/mL. Please optimize the concentration based on your specific assay requirements.

Immunogen Information

Gene ID

3627

Swiss Prot

P02778

Immunogen

Recombinant protein (or fragment). This information is considered to be commercially sensitive.

Synonyms

C7; IFI10; INP10; IP-10; crg-2; mob-1; SCYB10; gIP-10; CXCL10/IP-10

Product Information

Source

Rabbit

Isotype

IgG

Purification

Affinity purification

Storage

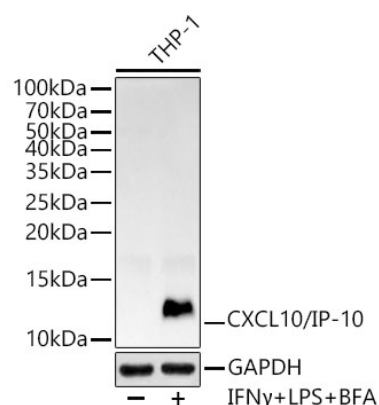
Store at -20°C Avoid freeze / thaw cycles.
Buffer: PBS,pH7.3.

Contact

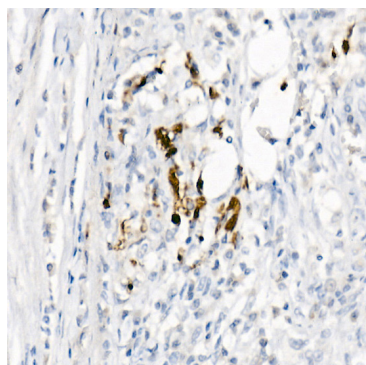


www.abclonal.com

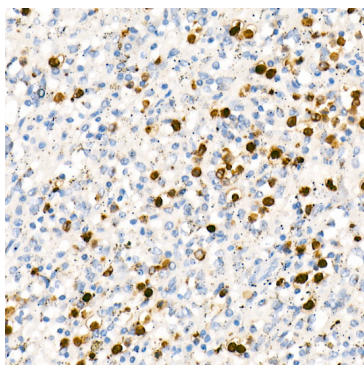
Validation Data



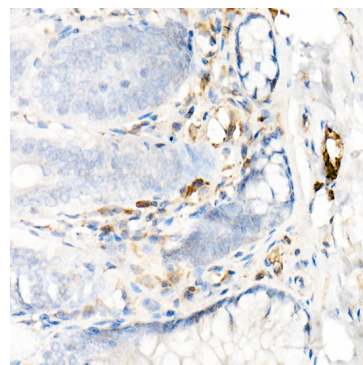
Western blot analysis of lysates from THP-1 cells, using CXCL10/IP-10 Rabbit mAb (A21986NFB) at 1:10000 dilution. THP-1 cells were treated with LPS for 6 hours and Brefeldin A for 3 hours and IFN- α (100 ng/ml) at 37°C for 30 minutes after serum-starvation overnight
 Secondary antibody: HRP-conjugated Goat anti-Rabbit IgG (H+L) (AS014) at 1:10000 dilution.
 Lysates/proteins: 25 μ g per lane.
 Blocking buffer: 3% nonfat dry milk in TBST.
 Detection: ECL Basic Kit (RM00020).
 Exposure time: 90s.



Immunohistochemistry analysis of paraffin-embedded Human colon carcinoma using CXCL10/IP-10 Rabbit mAb (A21986NFB) at dilution of 1:100 (40x lens). High pressure antigen retrieval performed with 0.01M Citrate buffer (pH 6.0) prior to IHC staining.



Immunohistochemistry analysis of paraffin-embedded Human spleen using CXCL10/IP-10 Rabbit mAb (A21986NFB) at dilution of 1:100 (40x lens). High pressure antigen retrieval performed with 0.01M Citrate buffer (pH 6.0) prior to IHC staining.



Immunohistochemistry analysis of paraffin-embedded Rat intestine using CXCL10/IP-10 Rabbit mAb (A21986NFB) at dilution of 1:100 (40x lens). High pressure antigen retrieval performed with 0.01M Citrate buffer (pH 6.0) prior to IHC staining.