

A22044

Leader in Biomolecular Solutions for Life Science



PBEF/Visfatin/NAMPT Rabbit mAb

Catalog No.: A22044

Recombinant

2 Publications

Basic Information

Observed MW

52kDa

Calculated MW

56kDa

Category

SMab Recombinant Monoclonal
Antibody

Applications

WB,IHC-P,ELISA

Cross-Reactivity

Human,Mouse,Rat

CloneNo number

ARC53731

Background

This gene encodes a protein that catalyzes the condensation of nicotinamide with 5-phosphoribosyl-1-pyrophosphate to yield nicotinamide mononucleotide, one step in the biosynthesis of nicotinamide adenine dinucleotide. The protein belongs to the nicotinic acid phosphoribosyltransferase (NAPRTase) family and is thought to be involved in many important biological processes, including metabolism, stress response and aging. This gene has a pseudogene on chromosome 10.

Recommended Dilutions

WB 1:55000 - 1:220000

IHC-P 1:2000 - 1:20000

ELISA Recommended starting concentration is 1 µg/mL. Please optimize the concentration based on your specific assay requirements.

Immunogen Information

Gene ID

10135

Swiss Prot

P43490

Immunogen

Synthetic peptide. This information is considered to be commercially sensitive.

Synonyms

VF; PBEF; PBEF1; VISFATIN; 1110035O14Rik; PBEF/Visfatin/NAMPT

Contact



www.abclonal.com

Product Information

Source

Rabbit

Isotype

IgG

Purification

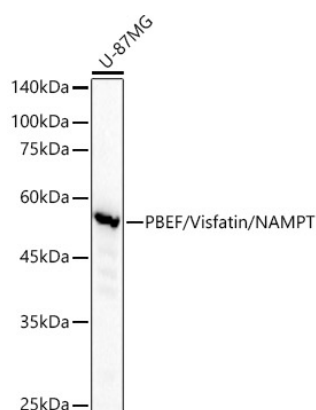
Affinity purification

Storage

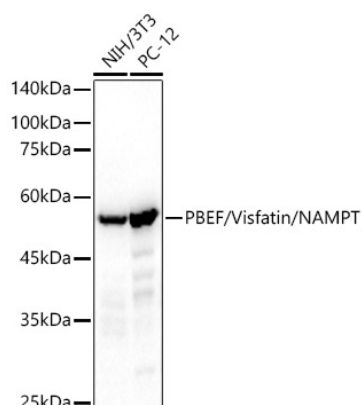
Store at -20°C. Avoid freeze / thaw cycles.

Buffer: PBS containing 50% glycerol and 0.05% BSA, preserved with proclin300 or sodium azide (as specified on the Certificate of Analysis), pH 7.3.

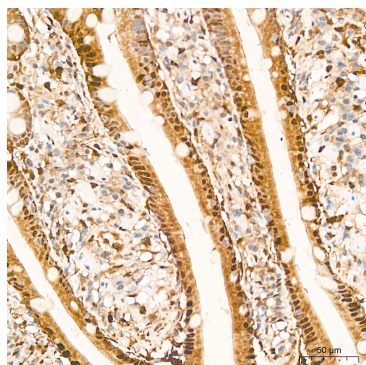
Validation Data



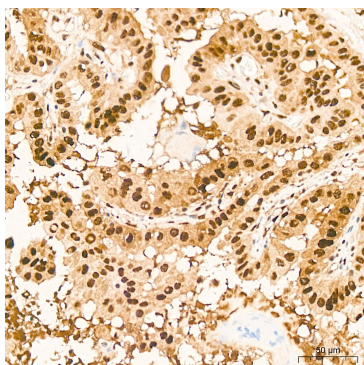
Western blot analysis of lysates from U-87MG cells, using PBEF/Visfatin/NAMPT Rabbit mAb (A22044) at 1:110000 dilution.
 Secondary antibody: HRP-conjugated Goat anti-Rabbit IgG (H+L) (AS014) at 1:10000 dilution.
 Lysates/proteins: 25µg per lane.
 Blocking buffer: 3% nonfat dry milk in TBST.
 Detection: ECL Basic Kit (RM00020).
 Exposure time: 20s.



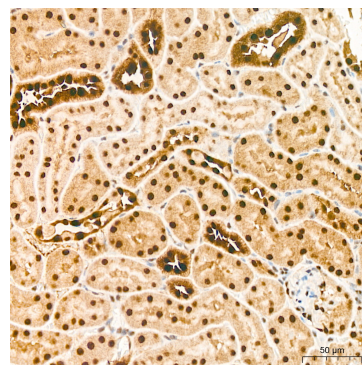
Western blot analysis of various lysates using PBEF/Visfatin/NAMPT Rabbit mAb (A22044) at 1:110000 dilution.
 Secondary antibody: HRP-conjugated Goat anti-Rabbit IgG (H+L) (AS014) at 1:10000 dilution.
 Lysates/proteins: 25µg per lane.
 Blocking buffer: 3% nonfat dry milk in TBST.
 Detection: ECL Basic Kit (RM00020).
 Exposure time: 90s.



Immunohistochemistry analysis of paraffin-embedded Human small intestine tissue using PBEF/Visfatin/NAMPT Rabbit mAb (A22044) at a dilution of 1:2000 (40x lens). High pressure antigen retrieval performed with 0.01M Citrate buffer (pH 6.0) prior to IHC staining.

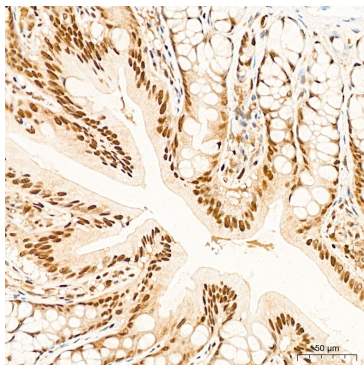


Immunohistochemistry analysis of paraffin-embedded Human thyroid cancer tissue using PBEF/Visfatin/NAMPT Rabbit mAb (A22044) at a dilution of 1:2000 (40x lens). High pressure antigen retrieval performed with 0.01M Citrate buffer (pH 6.0) prior to IHC staining.

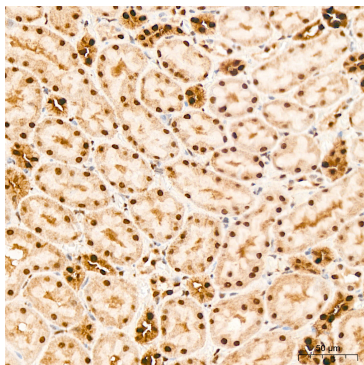


Immunohistochemistry analysis of paraffin-embedded Mouse kidney tissue using PBEF/Visfatin/NAMPT Rabbit mAb (A22044) at a dilution of 1:2000 (40x lens). High pressure antigen retrieval performed with 0.01M Citrate buffer (pH 6.0) prior to IHC staining.

Validation Data



Immunohistochemistry analysis of paraffin-embedded Rat colon tissue using PBEF/Visfatin/NAMPT Rabbit mAb (A22044) at a dilution of 1:2000 (40x lens). High pressure antigen retrieval performed with 0.01M Citrate buffer (pH 6.0) prior to IHC staining.



Immunohistochemistry analysis of paraffin-embedded Rat kidney tissue using PBEF/Visfatin/NAMPT Rabbit mAb (A22044) at a dilution of 1:2000 (40x lens). High pressure antigen retrieval performed with 0.01M Citrate buffer (pH 6.0) prior to IHC staining.