

A22224

Leader in Biomolecular Solutions for Life Science



# TriMethyl-Histone H3-K4 Rabbit mAb

Catalog No.: A22224

Recombinant

## Basic Information

### Observed MW

17kDa

### Calculated MW

15kDa

### Category

SMab Recombinant Monoclonal  
Antibody

### Applications

WB, IHC-P, IF/ICC, ChIP, ELISA

### Cross-Reactivity

Human, Mouse, Rat, Other (Wide Range  
Predicted)

### CloneNo number

ARC55088

## Recommended Dilutions

WB 1:10000 - 1:30000

IHC-P 1:50 - 1:200

IF/ICC 1:50 - 1:200

ELISA Recommended starting  
concentration is 1  
μg/mL. Please optimize  
the concentration  
based on your specific  
assay requirements.ChIP 5μg antibody for  
5μg-10μg of Chromatin

## Contact

[www.abclonal.com](http://www.abclonal.com)

## Background

Histones are basic nuclear proteins that are responsible for the nucleosome structure of the chromosomal fiber in eukaryotes. Nucleosomes consist of approximately 146 bp of DNA wrapped around a histone octamer composed of pairs of each of the four core histones (H2A, H2B, H3, and H4). The chromatin fiber is further compacted through the interaction of a linker histone, H1, with the DNA between the nucleosomes to form higher order chromatin structures. This gene is intronless and encodes a replication-dependent histone that is a member of the histone H3 family. Transcripts from this gene lack polyA tails; instead, they contain a palindromic termination element. This gene is located separately from the other H3 genes that are in the histone gene cluster on chromosome 6p22-p21.3.

## Immunogen Information

### Gene ID

8290/8350

### Swiss Prot

Q16695/P68431

### Immunogen

Synthetic peptide. This information is considered to be commercially sensitive.

### Synonyms

H3.4; H3/g; H3FT; H3t; HIST3H3; Histone H3; HIST1H3A; TriMethyl-Histone H3-K4

## Product Information

### Source

Rabbit

### Isotype

IgG

### Purification

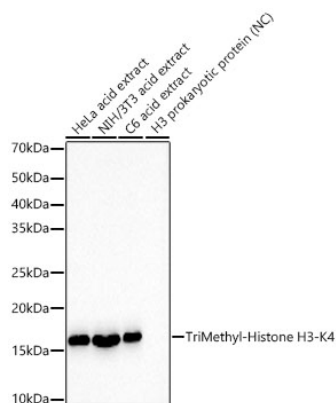
Affinity purification

### Storage

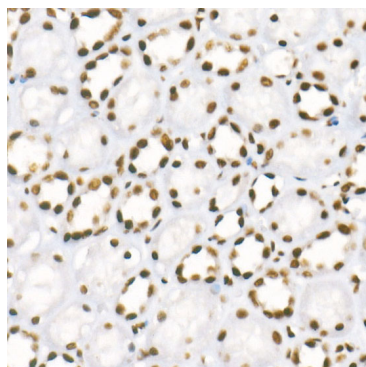
Store at -20°C. Avoid freeze / thaw cycles.

Buffer: PBS containing 50% glycerol and 0.05% BSA, preserved with proclin300 or sodium azide (as specified on the Certificate of Analysis), pH 7.3.

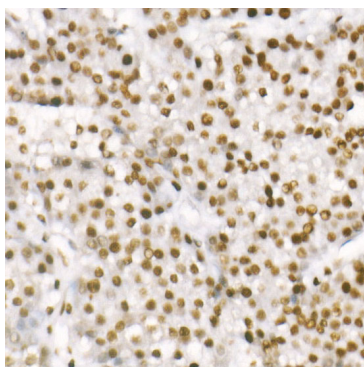
## Validation Data



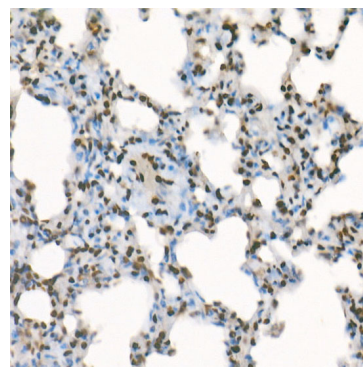
Western blot analysis of various lysates, using TriMethyl-Histone H3-K4 Rabbit mAb (A22224) at 1:30000 dilution.  
 Secondary antibody: HRP-conjugated Goat anti-Rabbit IgG (H+L) (AS014) at 1:10000 dilution.  
 Lysates/proteins: 25µg per lane.  
 Blocking buffer: 3% nonfat dry milk in TBST.  
 Detection: ECL Basic Kit (RM00020).  
 Exposure time: 30s.



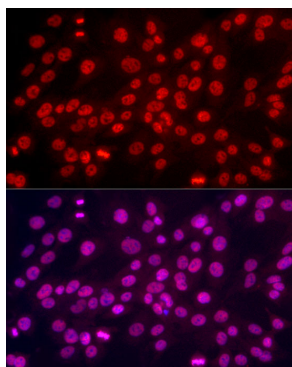
Immunohistochemistry analysis of paraffin-embedded Human kidney using TriMethyl-Histone H3-K4 Rabbit mAb (A22224) at dilution of 1:100 (40x lens). High pressure antigen retrieval performed with 0.01M Citrate buffer (pH 6.0) prior to IHC staining.



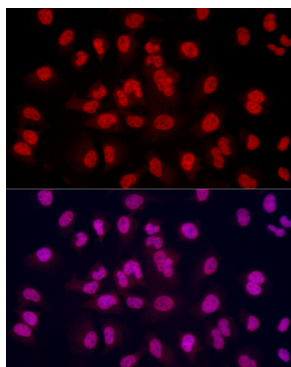
Immunohistochemistry analysis of paraffin-embedded Human liver cancer using TriMethyl-Histone H3-K4 Rabbit mAb (A22224) at dilution of 1:100 (40x lens). High pressure antigen retrieval performed with 0.01M Citrate buffer (pH 6.0) prior to IHC staining.



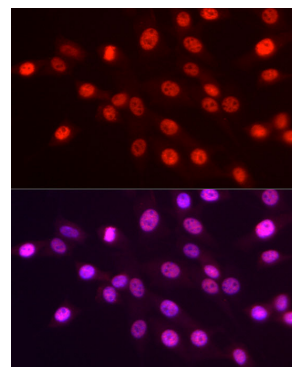
Immunohistochemistry analysis of paraffin-embedded Rat kidney using TriMethyl-Histone H3-K4 Rabbit mAb (A22224) at dilution of 1:100 (40x lens). High pressure antigen retrieval performed with 0.01M Citrate buffer (pH 6.0) prior to IHC staining.



Immunofluorescence analysis of C6 cells using TriMethyl-Histone H3-K4 Rabbit mAb (A22224) at dilution of 1:100(40x lens). Secondary antibody: Cy3-conjugated Goat anti-Rabbit IgG (H+L) (AS007) at 1:500 dilution. Blue: DAPI for nuclear staining.

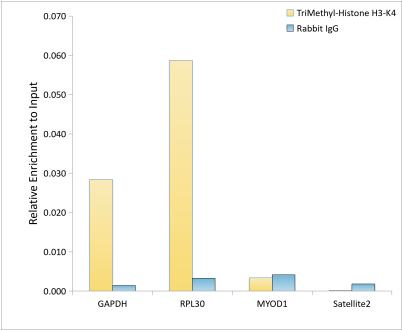


Immunofluorescence analysis of HeLa cells using TriMethyl-Histone H3-K4 Rabbit mAb (A22224) at dilution of 1:100(40x lens). Secondary antibody: Cy3-conjugated Goat anti-Rabbit IgG (H+L) (AS007) at 1:500 dilution. Blue: DAPI for nuclear staining.



Immunofluorescence analysis of NIH/3T3 cells using TriMethyl-Histone H3-K4 Rabbit mAb (A22224) at dilution of 1:100(40x lens). Secondary antibody: Cy3-conjugated Goat anti-Rabbit IgG (H+L) (AS007) at 1:500 dilution. Blue: DAPI for nuclear staining.

## Validation Data



Chromatin immunoprecipitation analysis of extracts of HeLa cells, using TriMethyl-Histone H3-K4 antibody (A22224) and rabbit IgG. The amount of immunoprecipitated DNA was checked by quantitative PCR. Histogram was constructed by the ratios of the immunoprecipitated DNA to the input.