

A22230

Leader in Biomolecular Solutions for Life Science



# BACH1 Rabbit mAb

Catalog No.: A22230

Recombinant

1 Publications

## Basic Information

### Observed MW

100-110kDa

### Calculated MW

82kDa

### Category

SMab Recombinant Monoclonal  
Antibody

### Applications

WB,ChIP,ELISA

### Cross-Reactivity

Human,Mouse

### CloneNo number

ARC56290

## Background

This gene encodes a transcription factor that belongs to the cap'n'collar type of basic region leucine zipper factor family (CNC-bZip). The encoded protein contains broad complex, tramtrack, bric-a-brac/poxvirus and zinc finger (BTB/POZ) domains, which is atypical of CNC-bZip family members. These BTB/POZ domains facilitate protein-protein interactions and formation of homo- and/or hetero-oligomers. When this encoded protein forms a heterodimer with MafK, it functions as a repressor of Maf recognition element (MARE) and transcription is repressed. Multiple alternatively spliced transcript variants have been identified for this gene.

## Recommended Dilutions

**WB** 1:2000 - 1:8000

**ELISA** Recommended starting concentration is 1 µg/mL. Please optimize the concentration based on your specific assay requirements.

**ChIP** 5µg antibody for 10µg-15µg of Chromatin

## Immunogen Information

### Gene ID

571

### Swiss Prot

O14867

### Immunogen

Recombinant fusion protein containing a sequence corresponding to amino acids 410-736 of human BACH1 (NP\_001177.1).

### Synonyms

BACH-1; BTBD24; BACH1

## Product Information

### Source

Rabbit

### Isotype

IgG

### Purification

Affinity purification

### Storage

Store at -20°C. Avoid freeze / thaw cycles.

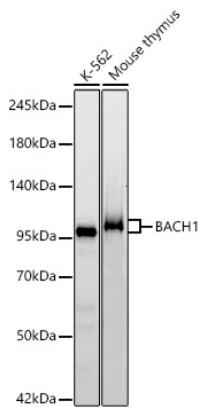
Buffer: PBS with 0.05% proclin300,0.05% BSA,50% glycerol,pH7.3.

## Contact

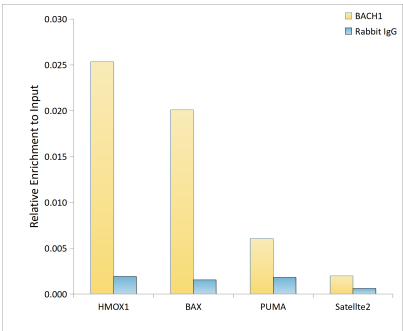


[www.abclonal.com](http://www.abclonal.com)

Validation Data



Western blot analysis of various lysates using BACH1 Rabbit mAb (A22230) at 1:11000 dilution incubated overnight at 4°C.  
Secondary antibody: HRP-conjugated Goat anti-Rabbit IgG (H+L) (AS014) at 1:10000 dilution.  
Lysates/proteins: 25 µg per lane.  
Blocking buffer: 3% nonfat dry milk in TBST.  
Detection: ECL Basic Kit (RM00020).  
Exposure time: 90s.



Chromatin immunoprecipitation analysis of extracts of K562 cells, using BACH1 antibody (A22230) and rabbit IgG. The amount of immunoprecipitated DNA was checked by quantitative PCR. Histogram was constructed by the ratios of the immunoprecipitated DNA to the input.