

A22284

Leader in Biomolecular Solutions for Life Science



IL4 Rabbit mAb

Catalog No.: A22284

Recombinant

Basic Information

Observed MW

16kDa/18kDa (Recombinant Protein)

Calculated MW

16kDa

Category

SMab Recombinant Monoclonal
Antibody

Applications

WB,ELISA

Cross-Reactivity

Mouse

CloneNo number

ARC56660

Recommended Dilutions

WB 1:1000 - 1:5000

ELISA Recommended starting concentration is 1 µg/mL. Please optimize the concentration based on your specific assay requirements.

Contact



www.abclonal.com

Background

Enables cytokine activity. Involved in several processes, including innate immune response in mucosa; negative regulation of white fat cell proliferation; and regulation of gene expression. Acts upstream of or within several processes, including T-helper cell differentiation; positive regulation of macromolecule metabolic process; and regulation of leukocyte activation. Located in external side of plasma membrane and extracellular space. Is expressed in several structures, including brain; colon; hemolymphoid system; liver; and placenta. Used to study Sjogren's syndrome; atopic dermatitis; and type 1 diabetes mellitus. Human ortholog(s) of this gene implicated in several diseases, including asthma (multiple); autoimmune disease (multiple); hepatitis B; hepatitis C; and pancreatic cancer (multiple). Orthologous to human IL4 (interleukin 4).

Immunogen Information

Gene ID

16189

Swiss Prot

P07750

Immunogen

Recombinant fusion protein containing a sequence corresponding to amino acids 21-140 of mouse IL4 (NP_067258.1).

Synonyms

IL-4; BSF-1; IL4

Product Information

Source

Rabbit

Isotype

IgG

Purification

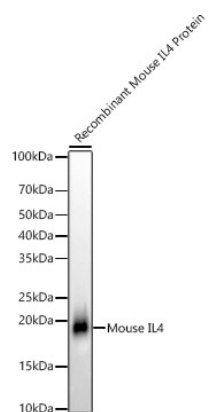
Affinity purification

Storage

Store at -20°C. Avoid freeze / thaw cycles.

Buffer: PBS with 0.09% Sodium azide, 0.05% BSA, 50% glycerol, pH7.3.

Validation Data



Western blot analysis of various lysates, using IL4 Rabbit mAb (A22284) at 1:2000 dilution.

Secondary antibody: HRP-conjugated Goat anti-Rabbit IgG (H+L) (AS014) at 1:10000 dilution.

Lysates/proteins: 25µg per lane.

Blocking buffer: 3% nonfat dry milk in TBST.

Detection: ECL Basic Kit (RM00020).

Exposure time: 10s.