

A22426

Leader in Biomolecular Solutions for Life Science



HDAC2 Rabbit mAb

Catalog No.: A22426

Recombinant

2 Publications

Basic Information

Observed MW

60kDa

Calculated MW

55kDa

Category

SMab Recombinant Monoclonal
Antibody

Applications

WB,IHC-P,IF/ICC,IP,ChIP,ELISA

Cross-Reactivity

Human,Mouse,Rat

CloneNo number

ARC0105

Background

This gene product belongs to the histone deacetylase family. Histone deacetylases act via the formation of large multiprotein complexes, and are responsible for the deacetylation of lysine residues at the N-terminal regions of core histones (H2A, H2B, H3 and H4). This protein forms transcriptional repressor complexes by associating with many different proteins, including YY1, a mammalian zinc-finger transcription factor. Thus, it plays an important role in transcriptional regulation, cell cycle progression and developmental events. Alternative splicing results in multiple transcript variants.

Recommended Dilutions

WB 1:500 - 1:2000**IHC-P** 1:200 - 1:800**IF/ICC** 1:50 - 1:200**IP** 0.5µg-4µg antibody for
200µg-400µg extracts
of whole cells**ELISA** Recommended starting
concentration is 1
µg/mL. Please optimize
the concentration
based on your specific
assay requirements.**ELISA** Recommended starting
concentration is 1
µg/mL. Please optimize
the concentration
based on your specific
assay requirements.**ChIP** 5µg antibody for
10µg-15µg of

Immunogen Information

Gene ID

3066

Swiss Prot

Q92769

Immunogen

Synthetic peptide. This information is considered to be commercially sensitive.

Synonyms

HD2; RPD3; YAF1; KDAC2; HDAC2

Product Information

Source

Rabbit

Isotype

IgG

Purification

Affinity purification

Storage

Store at -20°C. Avoid freeze / thaw cycles.

Buffer: PBS with 0.02% sodium azide,0.05% BSA,50% glycerol,pH7.3.

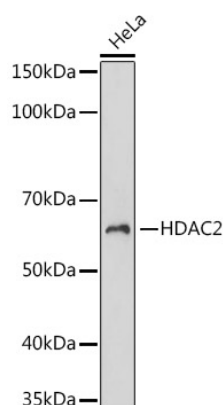
Chromatin.

Contact



www.abclonal.com

Validation Data



Western blot analysis of lysates from HeLa cells, using HDAC2 Rabbit mAb (A22426) at 1:1000 dilution.

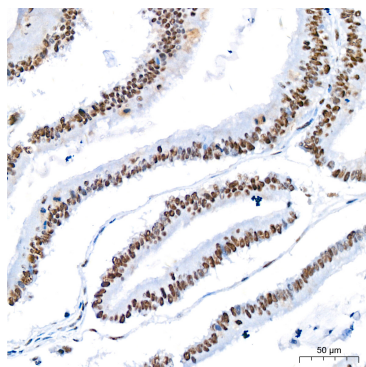
Secondary antibody: HRP-conjugated Goat anti-Rabbit IgG (H+L) (AS014) at 1:10000 dilution.

Lysates/proteins: 25µg per lane.

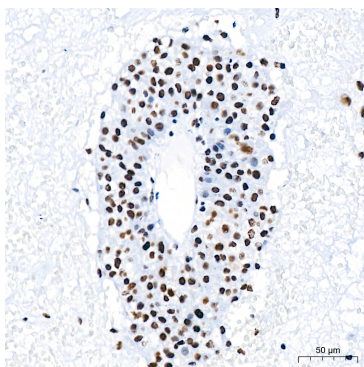
Blocking buffer: 3% nonfat dry milk in TBST.

Detection: ECL Basic Kit (RM00020).

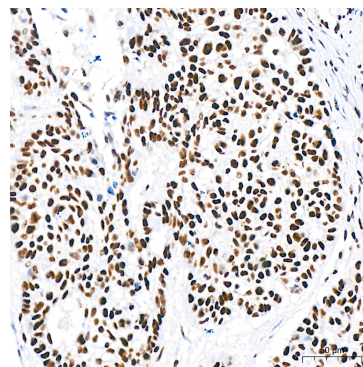
Exposure time: 60s.



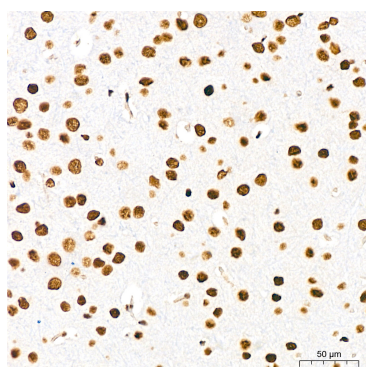
Immunohistochemistry analysis of paraffin-embedded Human colon carcinoma tissue using HDAC2 Rabbit mAb (A22426) at a dilution of 1:200 (40x lens). High pressure antigen retrieval performed with 0.01M Citrate buffer (pH 6.0) prior to IHC staining.



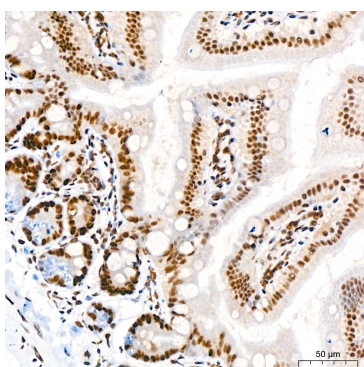
Immunohistochemistry analysis of paraffin-embedded Human liver cancer tissue using HDAC2 Rabbit mAb (A22426) at a dilution of 1:200 (40x lens). High pressure antigen retrieval performed with 0.01M Citrate buffer (pH 6.0) prior to IHC staining.



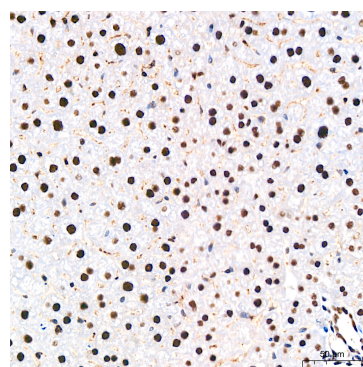
Immunohistochemistry analysis of paraffin-embedded Human lung squamous carcinoma tissue using HDAC2 Rabbit mAb (A22426) at a dilution of 1:200 (40x lens). High pressure antigen retrieval performed with 0.01M Citrate buffer (pH 6.0) prior to IHC staining.



Immunohistochemistry analysis of paraffin-embedded Mouse brain tissue using HDAC2 Rabbit mAb (A22426) at a dilution of 1:200 (40x lens). High pressure antigen retrieval performed with 0.01M Citrate buffer (pH 6.0) prior to IHC staining.

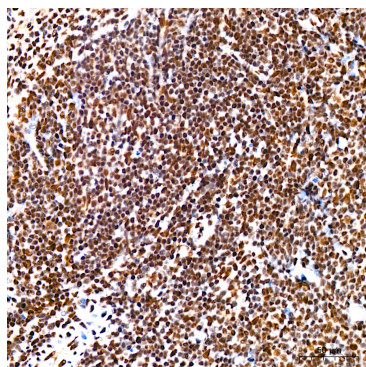


Immunohistochemistry analysis of paraffin-embedded Mouse intestine tissue using HDAC2 Rabbit mAb (A22426) at a dilution of 1:200 (40x lens). High pressure antigen retrieval performed with 0.01M Citrate buffer (pH 6.0) prior to IHC staining.

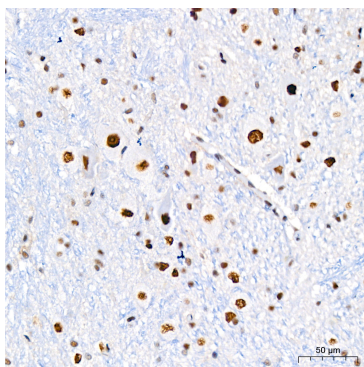


Immunohistochemistry analysis of paraffin-embedded Mouse liver tissue using HDAC2 Rabbit mAb (A22426) at a dilution of 1:200 (40x lens). High pressure antigen retrieval performed with 0.01M Citrate buffer (pH 6.0) prior to IHC staining.

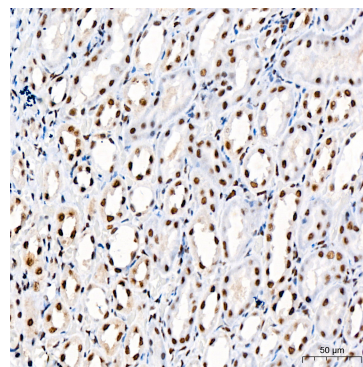
Validation Data



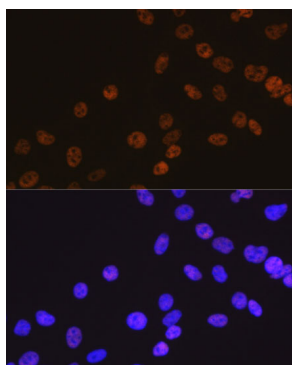
Immunohistochemistry analysis of paraffin-embedded Mouse spleen tissue using HDAC2 Rabbit mAb (A22426) at a dilution of 1:200 (40x lens). High pressure antigen retrieval performed with 0.01M Citrate buffer (pH 6.0) prior to IHC staining.



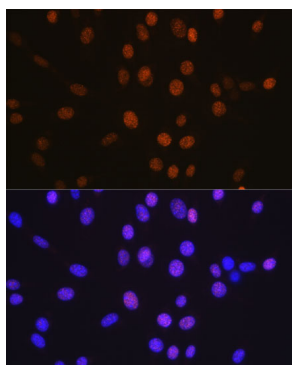
Immunohistochemistry analysis of paraffin-embedded Rat brain tissue using HDAC2 Rabbit mAb (A22426) at a dilution of 1:200 (40x lens). High pressure antigen retrieval performed with 0.01M Citrate buffer (pH 6.0) prior to IHC staining.



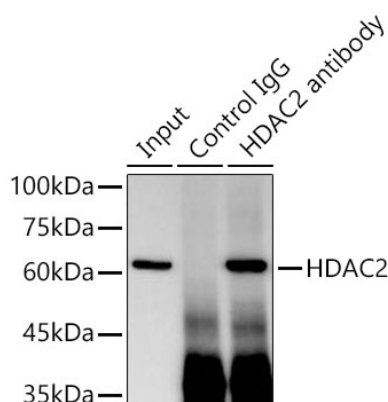
Immunohistochemistry analysis of paraffin-embedded Rat kidney tissue using HDAC2 Rabbit mAb (A22426) at a dilution of 1:200 (40x lens). High pressure antigen retrieval performed with 0.01M Citrate buffer (pH 6.0) prior to IHC staining.



Immunofluorescence analysis of C6 cells using HDAC2 Rabbit mAb (A22426) at dilution of 1:100. Secondary antibody: Cy3-conjugated Goat anti-Rabbit IgG (H+L) (AS007) at 1:500 dilution. Blue: DAPI for nuclear staining.



Immunofluorescence analysis of NIH/3T3 cells using HDAC2 Rabbit mAb (A22426) at dilution of 1:100 (40xlens). Secondary antibody: Cy3-conjugated Goat anti-Rabbit IgG (H+L) (AS007) at 1:500 dilution. Blue: DAPI for nuclear staining.



Immunoprecipitation analysis of 300μg extracts from HeLa cells using 3μg HDAC2 Rabbit mAb (A22426). Western blot was performed from the immunoprecipitate using HDAC2 Rabbit mAb (A22426) at a dilution of 1:500.