

A22535

Leader in Biomolecular Solutions for Life Science



Cleaved PARP (Asp214) Rabbit pAb

Catalog No.: A22535

5 Publications

Basic Information

Observed MW

89kDa

Calculated MW

113kDa

Category

Polyclonal Antibody

Applications

WB, ELISA

Cross-Reactivity

Mouse

Background

Enables NAD⁺ ADP-ribosyltransferase activity; chromatin binding activity; and protein ADP-ribosylase activity. Involved in negative regulation of telomere maintenance via telomere lengthening; positive regulation of single strand break repair; and voluntary musculoskeletal movement. Acts upstream of or within several processes, including DNA metabolic process; behavioral response to cocaine; and protein poly-ADP-ribosylation. Located in cytoplasm; nucleolus; and nucleoplasm. Part of protein-containing complex. Is expressed in several structures, including Peyer's patch; brain; gut; immune system; and retina. Human ortholog(s) of this gene implicated in several diseases, including arthritis; bacterial meningitis; neurodegenerative disease (multiple); stomach carcinoma; and type 2 diabetes mellitus. Orthologous to human PARP1 (poly(ADP-ribose) polymerase 1).

Recommended Dilutions

WB 1:100 - 1:500

ELISA Recommended starting concentration is 1 µg/mL. Please optimize the concentration based on your specific assay requirements.

Immunogen Information

Gene ID

11545

Swiss Prot

Q921K2

Immunogen

Synthetic peptide. This information is considered to be commercially sensitive.

Synonyms

PARP; PPOL; ARTD1; Adprp; Adprt1; msPARP; parp-1; sPARP-1; 5830444G22Rik; Cleaved PARP (Asp214)

Contact

 www.abclonal.com

Product Information

Source

Rabbit

Isotype

IgG

Purification

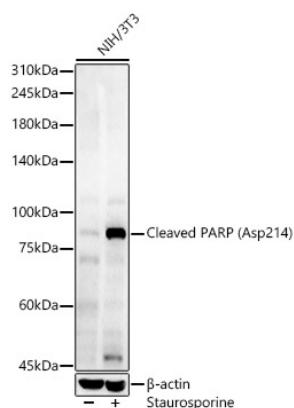
Affinity purification

Storage

Store at -20°C. Avoid freeze / thaw cycles.

Buffer: PBS with 0.05% proclin300, 50% glycerol, pH7.3.

Validation Data



Western blot analysis of lysates from NIH/3T3 cells, using Cleaved PARP (Asp214) Rabbit pAb (A22535) at 1:400 dilution. NIH/3T3 cells were treated with staurosporine(1 uM) for 3 hour.

Secondary antibody: HRP-conjugated Goat anti-Rabbit IgG (H+L) (AS014) at 1:10000 dilution.

Lysates/proteins: 25µg per lane.

Blocking buffer: 3% nonfat dry milk in TBST.

Detection: ECL Enhanced Kit (RM00021).

Exposure time: 90s.