

A2275

Leader in Biomolecular Solutions for Life Science



## STK39 Rabbit mAb

Catalog No.: A2275

Recombinant

1 Publications

### Basic Information

#### Observed MW

68kDa

#### Calculated MW

59kDa

#### Category

SMab Recombinant Monoclonal  
Antibody

#### Applications

WB,IHC-P,IF/ICC,ELISA

#### Cross-Reactivity

Human,Mouse,Rat

#### CloneNo number

ARC1896

### Recommended Dilutions

**WB** 1:1000 - 1:6000

**IHC-P** 1:100 - 1:1000

**IF/ICC** 1:100 - 1:400

**ELISA** Recommended starting  
concentration is 1  
µg/mL. Please optimize  
the concentration  
based on your specific  
assay requirements.

### Contact



[www.abclonal.com](http://www.abclonal.com)

### Background

This gene encodes a serine/threonine kinase that is thought to function in the cellular stress response pathway. The kinase is activated in response to hypotonic stress, leading to phosphorylation of several cation-chloride-coupled cotransporters. The catalytically active kinase specifically activates the p38 MAP kinase pathway, and its interaction with p38 decreases upon cellular stress, suggesting that this kinase may serve as an intermediate in the response to cellular stress.

### Immunogen Information

#### Gene ID

27347

#### Swiss Prot

Q9UEW8

#### Immunogen

Recombinant fusion protein containing a sequence corresponding to amino acids 401-545 of human STK39 (Q9UEW8).

#### Synonyms

DCHT; PASK; SPAK; Ste 20 related kinase; STK39

### Product Information

#### Source

Rabbit

#### Isotype

IgG

#### Purification

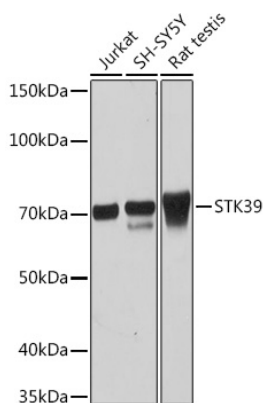
Affinity purification

#### Storage

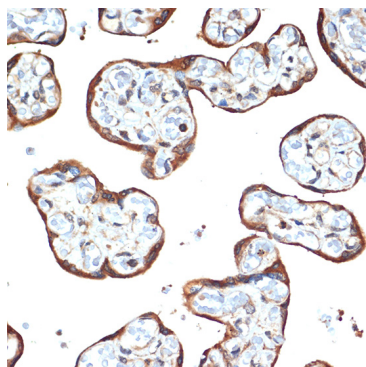
Store at -20°C. Avoid freeze / thaw cycles.

Buffer: PBS with 0.02% sodium azide,0.05% BSA,50% glycerol,pH7.3.

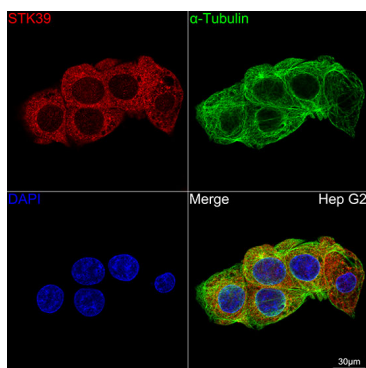
## Validation Data



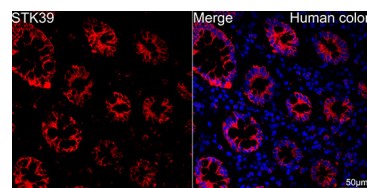
Western blot analysis of various lysates using STK39 Rabbit mAb (A2275) at 1:1000 dilution.  
 Secondary antibody: HRP-conjugated Goat anti-Rabbit IgG (H+L) (AS014) at 1:10000 dilution.  
 Lysates/proteins: 25µg per lane.  
 Blocking buffer: 3% nonfat dry milk in TBST.  
 Detection: ECL Basic Kit (RM00020).  
 Exposure time: 10s.



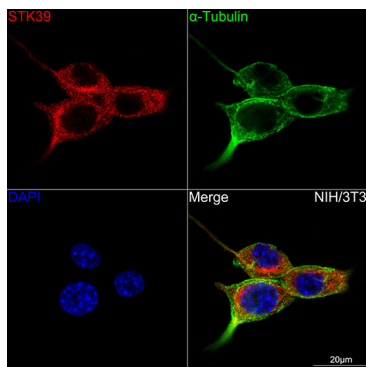
Immunohistochemistry analysis of paraffin-embedded Human placenta using STK39 Rabbit mAb (A2275) at dilution of 1:100 (40x lens).  
 Microwave antigen retrieval performed with 0.01M Tris/EDTA Buffer (pH 9.0) prior to IHC staining.



Confocal imaging of Hep G2 cells using STK39 Rabbit mAb (A2275, at dilution of 1:100) (Red). The cells were counterstained with α-Tubulin Mouse mAb (AC012, dilution 1:400) (Green). DAPI was used for nuclear staining (blue). Objective: 100x.



Confocal imaging of human colon using STK39 Rabbit mAb (A2275, at dilution of 1:100) (Red). Objective: 40x. Perform high pressure antigen retrieval with 10 mM citrate buffer pH 6.0 before commencing with IF staining protocol.



Confocal imaging of NIH/3T3 cells using STK39 Rabbit mAb (A2275, at dilution of 1:100) (Red). The cells were counterstained with α-Tubulin Mouse mAb (AC012, dilution 1:400) (Green). DAPI was used for nuclear staining (blue). Objective: 100x.