

A23047

Leader in Biomolecular Solutions for Life Science



## OXR1 Rabbit pAb

Catalog No.: A23047

### Basic Information

#### Observed MW

139kDa

#### Calculated MW

98kDa

#### Category

Polyclonal Antibody

#### Applications

WB, ELISA

#### Cross-Reactivity

Human, Mouse, Rat

### Background

Predicted to enable oxidoreductase activity. Predicted to be involved in response to oxidative stress. Predicted to act upstream of or within several processes, including adult walking behavior; negative regulation of neuron death; and negative regulation of peptidyl-cysteine S-nitrosylation. Predicted to be located in mitochondrion and nucleolus. Predicted to be active in nucleus. Implicated in cerebellar hypoplasia/atrophy, epilepsy, and global developmental delay.

### Recommended Dilutions

**WB** 1:500 - 1:1000

**ELISA** Recommended starting concentration is 1 µg/mL. Please optimize the concentration based on your specific assay requirements.

### Immunogen Information

#### Gene ID

55074

#### Swiss Prot

Q8N573

#### Immunogen

Recombinant protein (or fragment). This information is considered to be commercially sensitive.

#### Synonyms

TLDC3; CHEGDD; Nbla00307; OXR1

### Contact

 [www.abclonal.com](http://www.abclonal.com)

### Product Information

#### Source

Rabbit

#### Isotype

IgG

#### Purification

Affinity purification

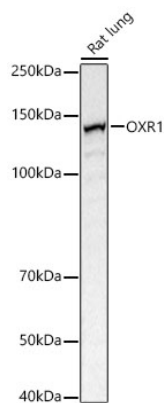
#### Storage

Store at -20°C. Avoid freeze / thaw cycles.

Buffer: PBS containing 50% glycerol, preserved with proclin300 or sodium azide (as specified on the Certificate of Analysis), pH 7.3.

## Validation Data

---



Western blot analysis of lysates from Rat lung using OXR1 Rabbit pAb (A23047) at 1:700 dilution.

Secondary antibody: HRP-conjugated Goat anti-Rabbit IgG (H+L) (AS014) at 1:10000 dilution.

Lysates/proteins: 25 µg per lane.

Blocking buffer: 3% nonfat dry milk in TBST.

Detection: ECL Basic Kit (RM00020).

Exposure time:1s.