

A23091

Leader in Biomolecular Solutions for Life Science



# Acetyl-Histone H4-K16 Rabbit mAb

Catalog No.: A23091

Recombinant

2 Publications

## Basic Information

### Observed MW

11kDa

### Calculated MW

11kDa

### Category

SMab Recombinant Monoclonal Antibody

### Applications

WB,IHC-P,ChIP,ELISA,DB

### Cross-Reactivity

Human,Mouse,Rat,Other (Wide Range Predicted)

### CloneNo number

ARC55790

## Recommended Dilutions

**WB** 1:2000-1:9000

**DB** 1:100 - 1:500

**IHC-P** 1:2000 - 1:8000

**ELISA** Recommended starting concentration is 1 µg/mL. Please optimize the concentration based on your specific assay requirements.

**ChIP** 5µg antibody for 5µg-10µg of Chromatin

## Contact



[www.abclonal.com](http://www.abclonal.com)

## Background

Histones are basic nuclear proteins that are responsible for the nucleosome structure of the chromosomal fiber in eukaryotes. Two molecules of each of the four core histones (H2A, H2B, H3, and H4) form an octamer, around which approximately 146 bp of DNA is wrapped in repeating units, called nucleosomes. The linker histone, H1, interacts with linker DNA between nucleosomes and functions in the compaction of chromatin into higher order structures. This gene is intronless and encodes a replication-dependent histone that is a member of the histone H4 family. Transcripts from this gene lack polyA tails but instead contain a palindromic termination element. This gene is found in the large histone gene cluster on chromosome 6.

## Immunogen Information

### Gene ID

8359/8370

### Swiss Prot

P62805

### Immunogen

Synthetic peptide. This information is considered to be commercially sensitive.

### Synonyms

H4C2; H4C3; H4C4; H4C5; H4C6; H4C8; H4C9; H4FA; H4-16; H4C11; H4C12; H4C13; H4C14; H4C15; H4C16; HIST1H4A; Acetyl-Histone H4-K16

## Product Information

### Source

Rabbit

### Isotype

IgG

### Purification

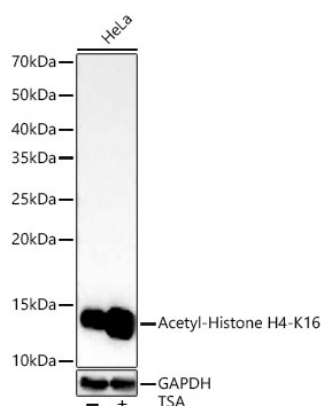
Affinity purification

### Storage

Store at -20°C. Avoid freeze / thaw cycles.

Buffer: PBS containing 50% glycerol and 0.05% BSA, preserved with proclin300 or sodium azide (as specified on the Certificate of Analysis), pH 7.3.

## Validation Data



Western blot analysis of lysates from HeLa cells, using Acetyl-Histone H4-K16 Rabbit mAb (A23091) at 1:8000 dilution. HeLa cells were treated with TSA (1  $\mu$ M) at 37°C for 18 hours.

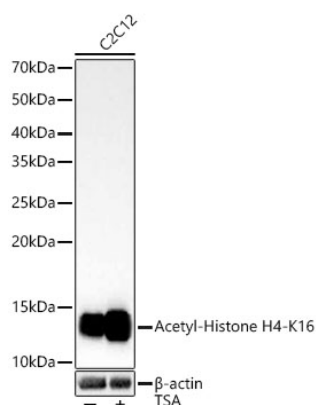
Secondary antibody: HRP-conjugated Goat anti-Rabbit IgG (H+L) (AS014) at 1:10000 dilution.

Lysates/proteins: 25 $\mu$ g per lane.

Blocking buffer: 3% nonfat dry milk in TBST.

Detection: ECL Basic Kit (RM00020).

Exposure time: 30s.



Western blot analysis of lysates from C2C12 cells, using Acetyl-Histone H4-K16 Rabbit mAb (A23091) at 1:8000 dilution. C2C12 cells were treated with TSA (1  $\mu$ M) at 37°C for 18 hours.

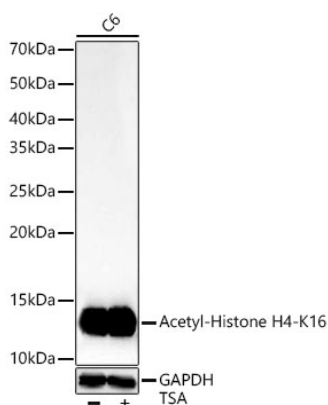
Secondary antibody: HRP-conjugated Goat anti-Rabbit IgG (H+L) (AS014) at 1:10000 dilution.

Lysates/proteins: 25 $\mu$ g per lane.

Blocking buffer: 3% nonfat dry milk in TBST.

Detection: ECL Basic Kit (RM00020).

Exposure time: 30s.



Western blot analysis of lysates from C6 cells, using Acetyl-Histone H4-K16 Rabbit mAb (A23091) at 1:8000 dilution. C6 cells were treated with TSA (1  $\mu$ M) at 37°C for 18 hours.

Secondary antibody: HRP-conjugated Goat anti-Rabbit IgG (H+L) (AS014) at 1:10000 dilution.

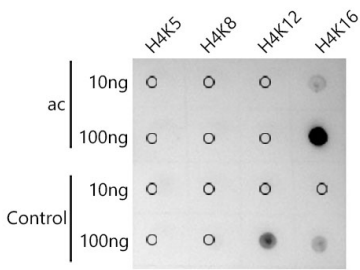
Lysates/proteins: 25 $\mu$ g per lane.

Blocking buffer: 3% nonfat dry milk in TBST.

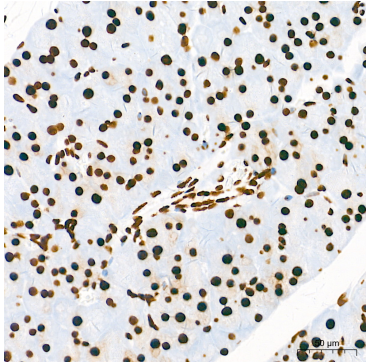
Detection: ECL Basic Kit (RM00020).

Exposure time: 30s.

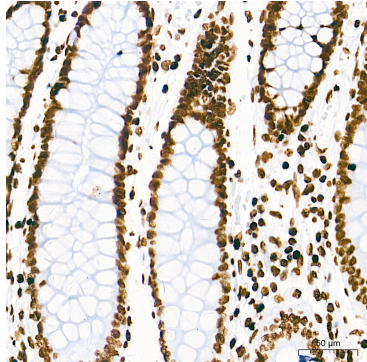
Validation Data



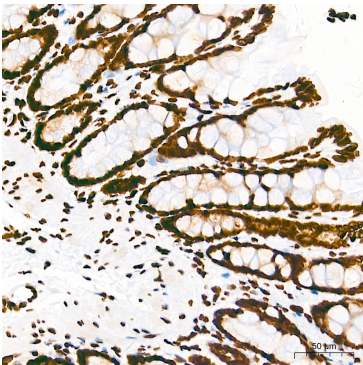
Dot-blot analysis of all sorts of peptides using Acetyl-Histone H4-K16 antibody (A23091) at 1:500 dilution.



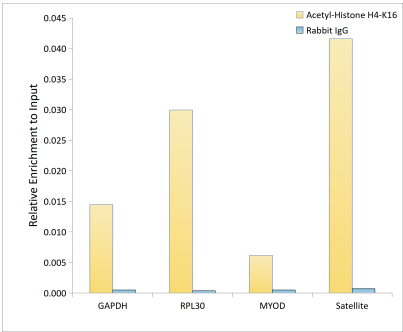
Immunohistochemistry analysis of paraffin-embedded Mouse pancreas tissue using Acetyl-Histone H4-K16 Rabbit mAb (A23091) at a dilution of 1:5000 (40x lens). High pressure antigen retrieval performed with 0.01M Tris-EDTA Buffer (pH 9.0) prior to IHC staining.



Immunohistochemistry analysis of paraffin-embedded Human colon tissue using Acetyl-Histone H4-K16 Rabbit mAb (A23091) at a dilution of 1:5000 (40x lens). High pressure antigen retrieval performed with 0.01M Tris-EDTA Buffer (pH 9.0) prior to IHC staining.



Immunohistochemistry analysis of paraffin-embedded Rat colon tissue using Acetyl-Histone H4-K16 Rabbit mAb (A23091) at a dilution of 1:5000 (40x lens). High pressure antigen retrieval performed with 0.01M Tris-EDTA Buffer (pH 9.0) prior to IHC staining.



Chromatin immunoprecipitation analysis of extracts of HeLa cells, using Acetyl-Histone H4-K16 antibody (A23091) and rabbit IgG. The amount of immunoprecipitated DNA was checked by quantitative PCR. Histogram was constructed by the ratios of the immunoprecipitated DNA to the input.