

A23158

Leader in Biomolecular Solutions for Life Science



CD2 Rabbit mAb

Catalog No.: A23158 **Recombinant**

Basic Information

Observed MW

48-65kDa

Calculated MW

39kDa

Category

SMab Recombinant Monoclonal
Antibody

Applications

WB,FC,ELISA

Cross-Reactivity

Human

CloneNo number

ARC59333

Recommended Dilutions

WB 1:500 - 1:1000

FC 1:100 - 1:500

ELISA Recommended starting concentration is 1 µg/mL. Please optimize the concentration based on your specific assay requirements.

Contact



www.abclonal.com

Background

The protein encoded by this gene is a surface antigen found on all peripheral blood T-cells. The encoded protein interacts with LFA3 (CD58) on antigen presenting cells to optimize immune recognition. A locus control region (LCR) has been found in the 3' flanking sequence of this gene.

Immunogen Information

Gene ID

914

Swiss Prot

P06729

Immunogen

Recombinant protein (or fragment). This information is considered to be commercially sensitive.

Synonyms

T11; SRBC; LFA-2

Product Information

Source

Rabbit

Isotype

IgG

Purification

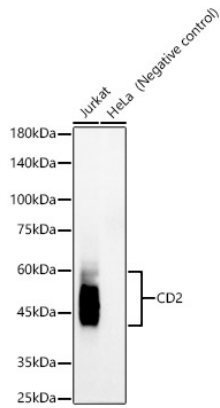
Affinity purification

Storage

Store at -20°C. Avoid freeze / thaw cycles.

Buffer: PBS containing 50% glycerol and 0.05% BSA, preserved with proclin300 or sodium azide (as specified on the Certificate of Analysis), pH 7.3.

Validation Data



Western blot analysis of various lysates, using CD2 Rabbit mAb (A23158) at 1:1000 dilution.

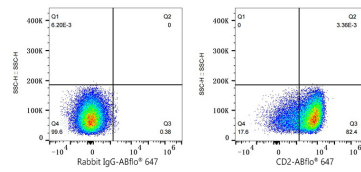
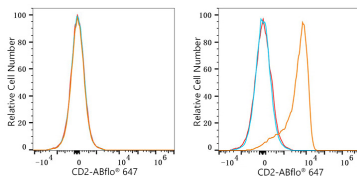
Secondary antibody: HRP-conjugated Goat anti-Rabbit IgG (H+L) (AS014) at 1:10000 dilution.

Lysates/proteins: 25µg per lane.

Blocking buffer: 3% nonfat dry milk in TBST.

Detection: ECL Basic Kit (RM00020).

Exposure time: 60s.



Flow cytometry: 1×10^6 K-562 cells (negative control, left) and Jurkat cells (right) were surface-stained with CD2 Rabbit mAb (A23158, 2 µg/mL, orange line) or ABflo® 647 Rabbit IgG isotype control (A22070, 5 µl/Test, blue line), followed by Alexa Fluor® 647 conjugated goat anti-rabbit pAb staining. Non-fluorescently stained cells were used as blank control (red line).

Flow cytometry: 1×10^6 Jurkat cells were surface-stained with ABflo® 647 Rabbit IgG isotype control (A22070, 5 µl/Test, left) or CD2 Rabbit mAb (A23158, 2 µg/mL, right).