

A23194

Leader in Biomolecular Solutions for Life Science



Human IgE Rabbit mAb

Catalog No.: A23194

Recombinant

Basic Information

Observed MW

60kDa

Calculated MW

47kDa

Category

SMab Recombinant Monoclonal
Antibody

Applications

WB,FC,ELISA

Cross-Reactivity

Human

CloneNo number

ARC60066

Background

IgE is the class of antibodies produced in the lungs, skin, and mucous membranes. It may protect against parasite invasion, but it is a major factor in allergic reactions. The antigen-specific IgE interacts with mast cells and eosinophils, triggers the release of histamine, leukotrienes and other substances that lead to the itching, sneezing and congestion of allergies - and the life threatening respiratory distress of asthma and anaphylactic shock

Recommended Dilutions

WB 1:500 - 1:1000

FC 1:500 - 1:1000

ELISA Recommended starting concentration is 1 µg/mL. Please optimize the concentration based on your specific assay requirements.

Immunogen Information

Gene ID

3497

Swiss Prot

P01854

Immunogen

Recombinant protein (or fragment). This information is considered to be commercially sensitive.

Synonyms

Igh2; IGHE; IGHEP1; Human IgE

Contact

 www.abclonal.com

Product Information

Source

Rabbit

Isotype

IgG

Purification

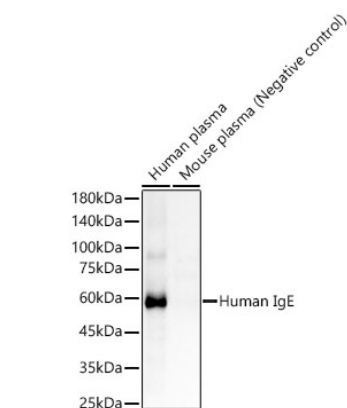
Affinity purification

Storage

Store at -20°C. Avoid freeze / thaw cycles.

Buffer: PBS containing 50% glycerol and 0.05% BSA, preserved with proclin300 or sodium azide (as specified on the Certificate of Analysis), pH 7.3.

Validation Data



Western blot analysis of various lysates, using Human IgE Rabbit mAb (A23194) at 1:1000 dilution.

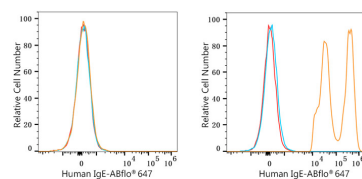
Secondary antibody: HRP-conjugated Goat anti-Rabbit IgG (H+L) (AS014) at 1:10000 dilution.

Lysates/proteins: 25µg per lane.

Blocking buffer: 3% nonfat dry milk in TBST.

Detection: ECL Enhanced Kit (RM00021).

Exposure time: 60s.



Flow cytometry: 1×10^6 HeLa cells (negative control, left) and Human PBMC (right) were surface-stained with Human IgE Rabbit mAb (A23194, 2 µg/mL, orange line) or ABflo® 647 Rabbit IgG isotype control (A22070, 5 µl/Test, blue line), followed by Alexa Fluor® 647 conjugated goat anti-rabbit pAb staining. Non-fluorescently stained cells were used as blank control (red line).