

A2356

Leader in Biomolecular Solutions for Life Science



# DiMethyl-Histone H3-K4 Rabbit pAb

Catalog No.: A2356

26 Publications

## Basic Information

### Observed MW

17kDa

### Calculated MW

16kDa

### Category

Polyclonal Antibody

### Applications

WB,IHC-P,IF/ICC,ChIP,ChIP-seq,ELISA

### Cross-Reactivity

Human,Mouse,Rat,Other (Wide Range Predicted)

## Background

Histones are basic nuclear proteins that are responsible for the nucleosome structure of the chromosomal fiber in eukaryotes. Nucleosomes consist of approximately 146 bp of DNA wrapped around a histone octamer composed of pairs of each of the four core histones (H2A, H2B, H3, and H4). The chromatin fiber is further compacted through the interaction of a linker histone, H1, with the DNA between the nucleosomes to form higher order chromatin structures. This gene is intronless and encodes a replication-dependent histone that is a member of the histone H3 family. Transcripts from this gene lack polyA tails; instead, they contain a palindromic termination element. This gene is located separately from the other H3 genes that are in the histone gene cluster on chromosome 6p22-p21.3.

## Recommended Dilutions

WB 1:500 - 1:1000

IHC-P 1:50 - 1:200

IF/ICC 1:50 - 1:200

ELISA Recommended starting concentration is 1 µg/mL. Please optimize the concentration based on your specific assay requirements.

ChIP 5.5µg antibody for 5µg-10µg of Chromatin

ChIP-seq 1:50 - 1:200

## Immunogen Information

### Gene ID

8290/8350

### Swiss Prot

Q16695/P68431

### Immunogen

Synthetic peptide. This information is considered to be commercially sensitive.

### Synonyms

H3t; H3.4; H3/g; H3FT; H3C16; HIST3H3; DiMethyl-Histone H3-K4

## Product Information

### Source

Rabbit

### Isotype

IgG

### Purification

Affinity purification

### Storage

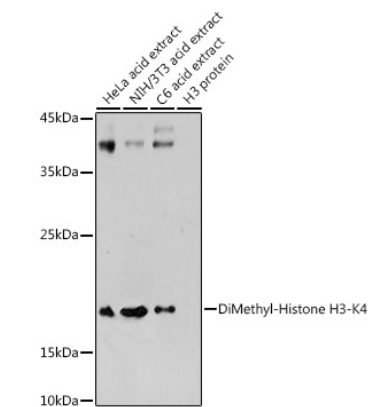
Store at -20°C. Avoid freeze / thaw cycles.

Buffer: PBS with 0.09% Sodium azide,50% glycerol,pH7.3.

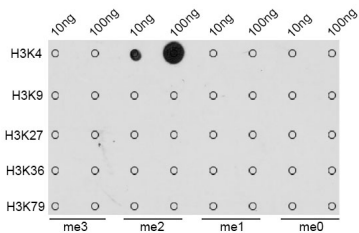
## Contact

[www.abclonal.com](http://www.abclonal.com)

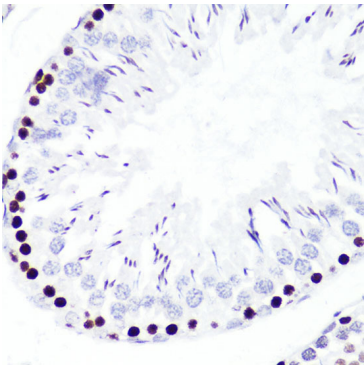
Validation Data



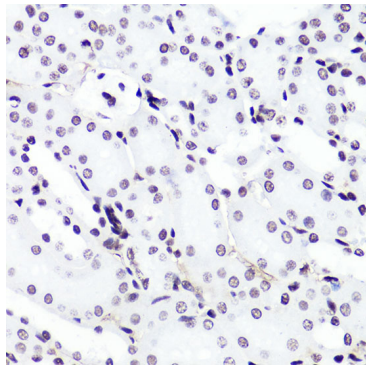
Western blot analysis of various lysates using DiMethyl-Histone H3-K4 Rabbit pAb (A2356) at 1:1000 dilution.  
Secondary antibody: HRP-conjugated Goat anti-Rabbit IgG (H+L) (AS014) at 1:10000 dilution.  
Lysates/proteins: 25µg per lane.  
Blocking buffer: 3% nonfat dry milk in TBST.  
Detection: ECL Basic Kit (RM00020).  
Exposure time: 1s.



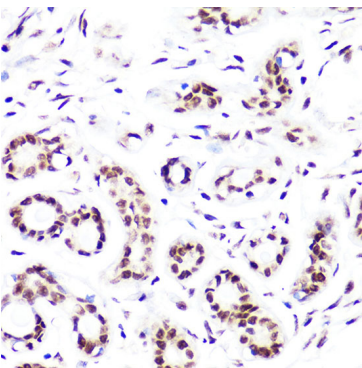
Dot-blot analysis of all sorts of methylation peptides using DiMethyl-Histone H3-K4 antibody (A2356).



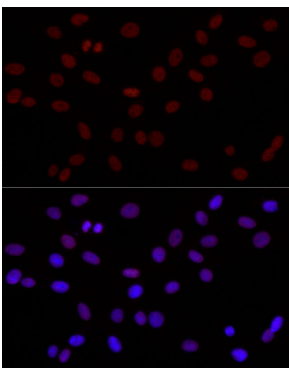
Immunohistochemistry analysis of paraffin-embedded Rat testis using DiMethyl-Histone H3-K4 Rabbit pAb (A2356) at dilution of 1:100 (40x lens). Microwave antigen retrieval performed with 0.01M PBS Buffer (pH 7.2) prior to IHC staining.



Immunohistochemistry analysis of paraffin-embedded Mouse kidney using DiMethyl-Histone H3-K4 Rabbit pAb (A2356) at dilution of 1:100 (40x lens). Microwave antigen retrieval performed with 0.01M PBS Buffer (pH 7.2) prior to IHC staining.

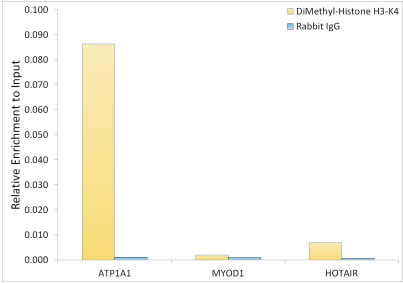


Immunohistochemistry analysis of paraffin-embedded Human breast using DiMethyl-Histone H3-K4 Rabbit pAb (A2356) at dilution of 1:100 (40x lens). Microwave antigen retrieval performed with 0.01M PBS Buffer (pH 7.2) prior to IHC staining.



Immunofluorescence analysis of PC-12 cells using DiMethyl-Histone H3-K4 Rabbit pAb (A2356) at dilution of 1:50 (40x lens). Secondary antibody: Cy3-conjugated Goat anti-Rabbit IgG (H+L) (AS007) at 1:500 dilution. Blue: DAPI for nuclear staining.

# Validation Data



Chromatin immunoprecipitation was performed with 10 µg of cross-linked chromatin from HeLa cells, using 5.5 µg of DiMethyl-Histone H3-K4 Rabbit pAb (A2356) and Rabbit IgG isotype control (AC042). The enrichment of immunoprecipitated DNA at different genomic loci was examined by quantitative PCR. The histogram compares the ratio of the immunoprecipitated DNA to the input at given loci.