

A2358

Leader in Biomolecular Solutions for Life Science



MonoMethyl-Histone H3-K9 Rabbit pAb

Catalog No.: A2358

13 Publications

Basic Information

Observed MW

14kDa

Calculated MW

16kDa

Category

Polyclonal Antibody

Applications

WB,IHC-P,IF/ICC,ChIP,ChIP-seq,ELISA,DB

Cross-Reactivity

Human,Mouse,Rat,Other (Wide Range Predicted)

Background

Histones are basic nuclear proteins that are responsible for the nucleosome structure of the chromosomal fiber in eukaryotes. Nucleosomes consist of approximately 146 bp of DNA wrapped around a histone octamer composed of pairs of each of the four core histones (H2A, H2B, H3, and H4). The chromatin fiber is further compacted through the interaction of a linker histone, H1, with the DNA between the nucleosomes to form higher order chromatin structures. This gene is intronless and encodes a replication-dependent histone that is a member of the histone H3 family. Transcripts from this gene lack polyA tails; instead, they contain a palindromic termination element. This gene is located separately from the other H3 genes that are in the histone gene cluster on chromosome 6p22-p21.3.

Recommended Dilutions

WB 1:500 - 1:1000

DB 1:500 - 1:2000

IHC-P 1:50 - 1:200

IF/ICC 1:50 - 1:200

ELISA Recommended starting concentration is 1 µg/mL. Please optimize the concentration based on your specific assay requirements.

ChIP 5µg antibody for 5µg-10µg of Chromatin

ChIP-seq 1:20 - 1:100

Contact

 www.abclonal.com

Immunogen Information

Gene ID

8290/8350

Swiss Prot

Q16695/P68431

Immunogen

Synthetic peptide. This information is considered to be commercially sensitive.

Synonyms

H3t; H3.4; H3/g; H3FT; H3C16; HIST3H3; MonoMethyl-Histone H3-K9

Product Information

Source

Rabbit

Isotype

IgG

Purification

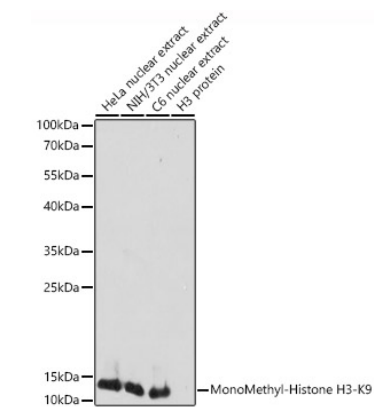
Affinity purification

Storage

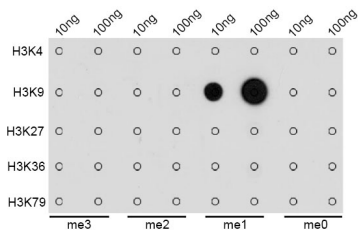
Store at -20°C. Avoid freeze / thaw cycles.

Buffer: PBS containing 50% glycerol, preserved with proclin300 or sodium azide (as specified on the Certificate of Analysis), pH 7.3.

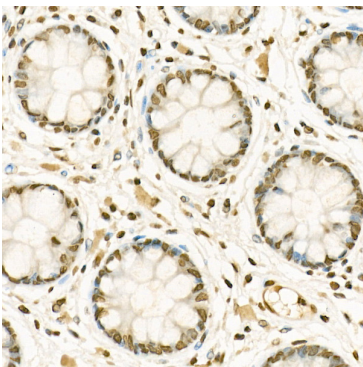
Validation Data



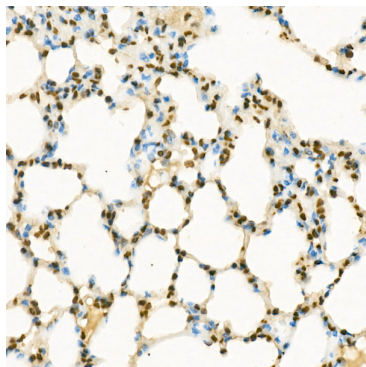
Western blot analysis of various lysates using MonoMethyl-Histone H3-K9 Rabbit pAb (A2358) at 1:1000 dilution.
Secondary antibody: HRP-conjugated Goat anti-Rabbit IgG (H+L) (AS014) at 1:10000 dilution.
Lysates/proteins: 25µg per lane.
Blocking buffer: 3% nonfat dry milk in TBST.
Detection: ECL Basic Kit (RM00020).
Exposure time: 5s.



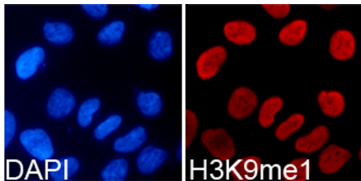
Dot-blot analysis of all sorts of methylation peptides using MonoMethyl-Histone H3-K9 antibody (A2358).



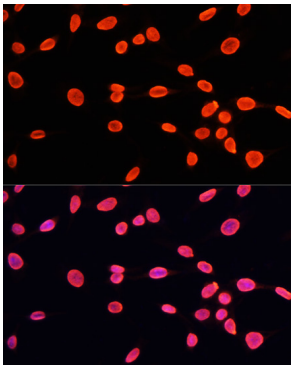
Immunohistochemistry analysis of paraffin-embedded Human colon using MonoMethyl-Histone H3-K9 Rabbit pAb (A2358) at dilution of 1:50 (40x lens). High pressure antigen retrieval performed with 0.01M Citrate buffer (pH 6.0) prior to IHC staining.



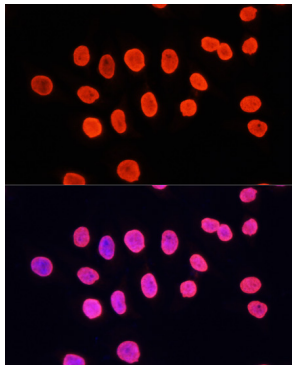
Immunohistochemistry analysis of paraffin-embedded Mouse lung using MonoMethyl-Histone H3-K9 Rabbit pAb (A2358) at dilution of 1:50 (40x lens). High pressure antigen retrieval performed with 0.01M Citrate buffer (pH 6.0) prior to IHC staining.



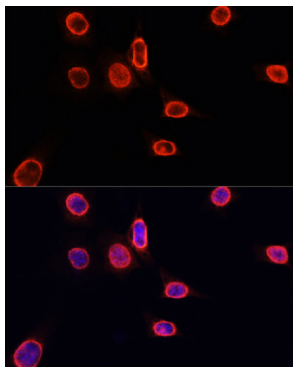
Immunofluorescence analysis of 293T cells using MonoMethyl-Histone H3-K9 Rabbit pAb (A2358). Blue: DAPI for nuclear staining.



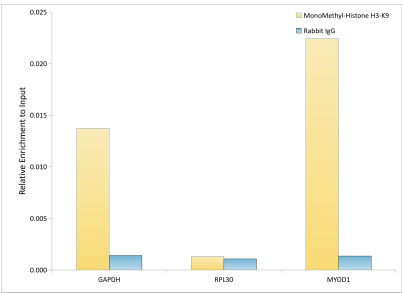
Immunofluorescence analysis of C6 cells using MonoMethyl-Histone H3-K9 Rabbit pAb (A2358) at dilution of 1:100. Secondary antibody: Cy3-conjugated Goat anti-Rabbit IgG (H+L) (AS007) at 1:500 dilution. Blue: DAPI for nuclear staining.



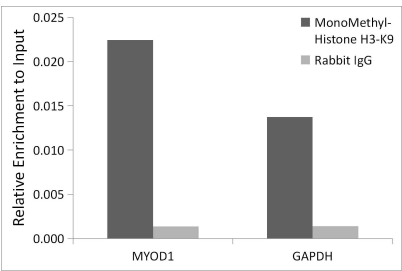
Immunofluorescence analysis of HeLa cells using MonoMethyl-Histone H3-K9 Rabbit pAb (A2358) at dilution of 1:100. Secondary antibody: Cy3-conjugated Goat anti-Rabbit IgG (H+L) (AS007) at 1:500 dilution. Blue: DAPI for nuclear staining.



Immunofluorescence analysis of NIH/3T3 cells using MonoMethyl-Histone H3-K9 Rabbit pAb (A2358) at dilution of 1:100. Secondary antibody: Cy3-conjugated Goat anti-Rabbit IgG (H+L) (AS007) at 1:500 dilution. Blue: DAPI for nuclear staining.



Chromatin immunoprecipitation analysis of extracts of HeLa cells, using MonoMethyl-Histone H3-K9 antibody (A2358) and rabbit IgG. The amount of immunoprecipitated DNA was checked by quantitative PCR. Histogram was constructed by the ratios of the immunoprecipitated DNA to the input.



Chromatin immunoprecipitation analysis of extracts of HeLa cells, using MonoMethyl-Histone H3-K9 antibody (A2358) and rabbit IgG. The amount of immunoprecipitated DNA was checked by quantitative PCR. Histogram was constructed by the ratios of the immunoprecipitated DNA to the input.