

A2364

Leader in Biomolecular Solutions for Life Science



MonoMethyl-Histone H3-K36 Rabbit pAb

Catalog No.: A2364

7 Publications

Basic Information

Observed MW

17kDa

Calculated MW

16kDa

Category

Polyclonal Antibody

Applications

WB,IF/ICC,ChIP,ChIP-seq,ELISA

Cross-Reactivity

Human,Mouse,Rat,Other (Wide Range Predicted)

Background

Histones are basic nuclear proteins that are responsible for the nucleosome structure of the chromosomal fiber in eukaryotes. Nucleosomes consist of approximately 146 bp of DNA wrapped around a histone octamer composed of pairs of each of the four core histones (H2A, H2B, H3, and H4). The chromatin fiber is further compacted through the interaction of a linker histone, H1, with the DNA between the nucleosomes to form higher order chromatin structures. This gene is intronless and encodes a replication-dependent histone that is a member of the histone H3 family. Transcripts from this gene lack polyA tails; instead, they contain a palindromic termination element. This gene is located separately from the other H3 genes that are in the histone gene cluster on chromosome 6p22-p21.3.

Recommended Dilutions

WB 1:500 - 1:1000

IF/ICC 1:50 - 1:200

ELISA Recommended starting concentration is 1 µg/mL. Please optimize the concentration based on your specific assay requirements.

ChIP 6.5µg antibody for 5µg-10µg of Chromatin

ChIP-seq 1:20 - 1:100

Contact

www.abclonal.com

Immunogen Information

Gene ID

8290/8350

Swiss Prot

Q16695/P68431

Immunogen

Synthetic peptide. This information is considered to be commercially sensitive.

Synonyms

H3t; H3.4; H3/g; H3FT; H3C16; HIST3H3; MonoMethyl-Histone H3-K36

Product Information

Source

Rabbit

Isotype

IgG

Purification

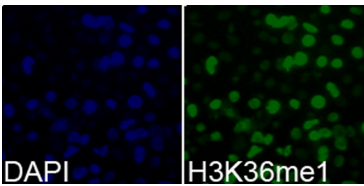
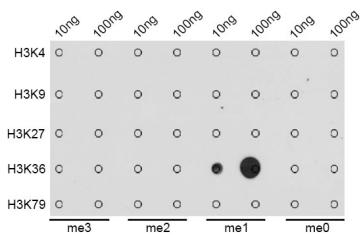
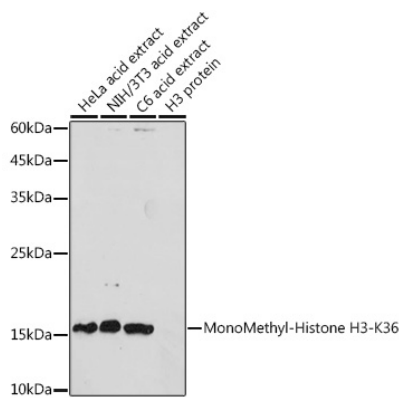
Affinity purification

Storage

Store at -20°C. Avoid freeze / thaw cycles.

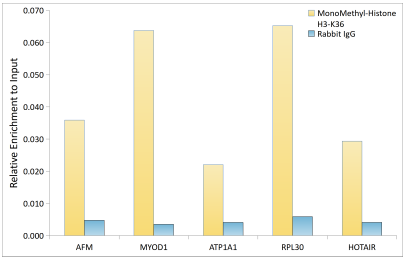
Buffer: PBS with 0.09% Sodium azide,50% glycerol,pH7.3.

Validation Data



Dot-blot analysis of all sorts of methylation peptides using MonoMethyl-Histone H3-K36 antibody (A2364).

Immunofluorescence analysis of 293T cells using MonoMethyl-Histone H3-K36 Rabbit pAb (A2364). Blue: DAPI for nuclear staining.



Chromatin immunoprecipitation analysis of extracts of HeLa cells, using MonoMethyl-Histone H3-K36 antibody (A2364) and rabbit IgG. The amount of immunoprecipitated DNA was checked by quantitative PCR. Histogram was constructed by the ratios of the immunoprecipitated DNA to the input.