

A23657

Leader in Biomolecular Solutions for Life Science



CD112 Rabbit pAb

Catalog No.: A23657

Basic Information

Observed MW

65-85kDa

Calculated MW

57kDa

Category

Polyclonal Antibody

Applications

WB, ELISA

Cross-Reactivity

Human, Mouse

Background

Enables cell adhesion molecule binding activity and protein homodimerization activity. Involved in homophilic cell adhesion via plasma membrane adhesion molecules. Acts upstream of or within several processes, including establishment of mitochondrion localization; sperm mitochondrion organization; and spermatid development. Located in cell-cell contact zone; plasma membrane; and zonula adherens. Is expressed in brain; cochlea; enamel organ; male reproductive system; and primitive collecting duct. Human ortholog(s) of this gene implicated in Alzheimer's disease and multiple sclerosis. Orthologous to human NECTIN2 (nectin cell adhesion molecule 2).

Recommended Dilutions

WB 1:1000 - 1:5000

ELISA Recommended starting concentration is 1 µg/mL. Please optimize the concentration based on your specific assay requirements.

Immunogen Information

Gene ID

19294

Swiss Prot

P32507

Immunogen

Recombinant protein (or fragment). This information is considered to be commercially sensitive.

Synonyms

MPH; Pvr; Pvs; Cd112; Pvr12; nectin-2; CD112

Contact



www.abclonal.com

Product Information

Source

Rabbit

Isotype

IgG

Purification

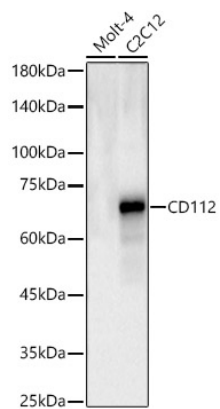
Affinity purification

Storage

Store at -20°C. Avoid freeze / thaw cycles.

Buffer: PBS containing 50% glycerol, preserved with proclin300 or sodium azide (as specified on the Certificate of Analysis), pH 7.3.

Validation Data



Western blot analysis of various lysates, using CD112 Rabbit pAb (A23657) at 1:2000 dilution.

Secondary antibody: HRP-conjugated Goat anti-Rabbit IgG (H+L) (AS014) at 1:10000 dilution.

Lysates/proteins: 25µg per lane.

Blocking buffer: 3% nonfat dry milk in TBST.

Detection: ECL Basic Kit (RM00020).

Exposure time: 90s.