

A23847

Leader in Biomolecular Solutions for Life Science



ABflo® 488 Rabbit anti-Human BCL6 mAb

Catalog No.: A23847

Basic Information

Observed MW

Calculated MW

72kDa/78kDa

Category

SMab Recombinant Monoclonal
Antibody

Applications

FC (intra)

Cross-Reactivity

Human

CloneNo number

ARC57886-ABflo488

Conjugate

ABflo® 488. Ex:491nm. Em:516nm.

Recommended Dilutions

FC (intra) 5 µl per 10⁶ cells in
100 µl volume

Contact



www.abclonal.com

Background

The protein encoded by this gene is a zinc finger transcription factor and contains an N-terminal POZ domain. This protein acts as a sequence-specific repressor of transcription, and has been shown to modulate the transcription of STAT-dependent IL-4 responses of B cells. This protein can interact with a variety of POZ-containing proteins that function as transcription corepressors. This gene is found to be frequently translocated and hypermutated in diffuse large-cell lymphoma (DLCL), and may be involved in the pathogenesis of DLCL. Alternatively spliced transcript variants encoding different protein isoforms have been found for this gene.

Immunogen Information

Gene ID

604

Swiss Prot

P41182

Immunogen

Recombinant protein (or fragment). This information is considered to be commercially sensitive.

Synonyms

BCL6; BCL5; BCL6A; LAZ3; ZBTB27; ZNF51; B-cell CLL/lymphoma 6

Product Information

Source

Rabbit

Isotype

IgG

Purification

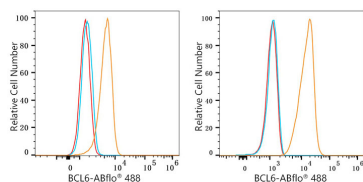
Affinity purification

Storage

Store at 2-8°C. Avoid freeze.

Buffer: PBS containing 0.2% BSA, preserved with proclin300 or sodium azide (as specified on the Certificate of Analysis), pH 7.3.

Validation Data



Flow cytometry: 1X10⁶ HAP1 cells(Low Expression,left) and Daudi cells(right) were intracellularly-stained with ABflo® 488 Rabbit anti-Human/Mouse BCL6 mAb(A23847 , 5 µl/Test,orange line) or ABflo® 488 Rabbit IgG isotype control (A22069,5 µl/Test,blue line).Non-fluorescently stained cells were used as blank control (red line).