

A23944

Leader in Biomolecular Solutions for Life Science



MonoMethyl-Histone H3-K36 Rabbit mAb

Catalog No.: A23944

Recombinant

Basic Information

Observed MW

17kDa

Calculated MW

15kDa

Category

SMab Recombinant Monoclonal
Antibody

Applications

WB,IP,ChIP,ELISA,DB

Cross-Reactivity

Human,Mouse,Rat,Other (Wide Range
Predicted)

CloneNo number

ARC61490

Recommended Dilutions

WB 1:1000 - 1:5000**DB** 1:1000 - 1:5000**IP** 0.5µg-4µg antibody for
200µg-400µg extracts
of whole cells**ELISA** Recommended starting
concentration is 1
µg/mL. Please optimize
the concentration
based on your specific
assay requirements.**ChIP** 5µg antibody for
5µg-10µg of Chromatin

Contact

www.abclonal.com

Background

Histones are basic nuclear proteins that are responsible for the nucleosome structure of the chromosomal fiber in eukaryotes. This structure consists of approximately 146 bp of DNA wrapped around a nucleosome, an octamer composed of pairs of each of the four core histones (H2A, H2B, H3, and H4). The chromatin fiber is further compacted through the interaction of a linker histone, H1, with the DNA between the nucleosomes to form higher order chromatin structures. This gene is intronless and encodes a replication-dependent histone that is a member of the histone H3 family. Transcripts from this gene lack polyA tails; instead, they contain a palindromic termination element. This gene is found in the large histone gene cluster on chromosome 6p22-p21.3.

Immunogen Information

Gene ID

8290/8350

Swiss Prot

Q16695/P68431

Immunogen

Synthetic peptide. This information is considered to be commercially sensitive.

Synonyms

H3/A; H3C2; H3C3; H3C4; H3C6; H3C7; H3C8; H3FA; H3C10; H3C11; H3C12; HIST1H3A;
MonoMethyl-Histone H3-K36

Product Information

Source

Rabbit

Isotype

IgG

Purification

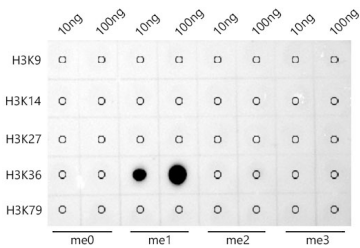
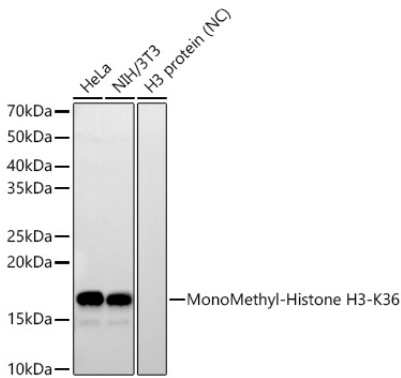
Affinity purification

Storage

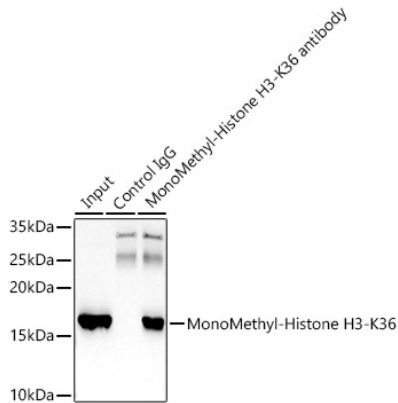
Store at -20°C. Avoid freeze / thaw cycles.

Buffer: PBS containing 50% glycerol and 0.05% BSA, preserved with proclin300 or sodium azide (as specified on the Certificate of Analysis), pH 7.3.

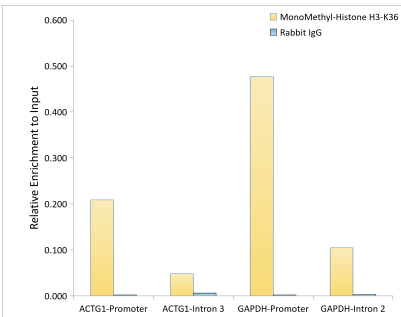
Validation Data



Dot-blot analysis of all sorts of peptides using MonoMethyl-Histone H3-K36 Rabbit mAb (A23944) at 1:2000 dilution.



Immunoprecipitation analysis of 600ug extracts of HeLa cells using 5ug MonoMethyl-Histone H3-K36 Rabbit mAb (A23944). Western blot was performed from the immunoprecipitate using MonoMethyl-Histone H3-K36 Rabbit mAb (A23944) at a dilution of 1:5000.



Chromatin immunoprecipitation analysis of extracts of MCF7 cells, using MonoMethyl-Histone H3-K36 Rabbit mAb antibody (A23944) and rabbit IgG. The amount of immunoprecipitated DNA was checked by quantitative PCR. Histogram was constructed by the ratios of the immunoprecipitated DNA to the input.