

A24046

Leader in Biomolecular Solutions for Life Science



ALPK1 Rabbit mAb

Catalog No.: A24046

Recombinant

Basic Information

Observed MW

139kDa

Calculated MW

139kDa

Category

SMab Recombinant Monoclonal
Antibody

Applications

WB,IHC-P,ELISA

Cross-Reactivity

Mouse,Rat

CloneNo number

ARC63314

Recommended Dilutions

WB 1:1000 - 1:7000

IHC-P 1:200 - 1:800

ELISA Recommended starting
concentration is 1
µg/mL. Please optimize
the concentration
based on your specific
assay requirements.

Contact

 www.abclonal.com

Background

α-Protein Kinase 1, also known as α-ALPK1 is associated with chronic kidney disease (CKD), myocardial infarction, gout and type 2 diabetes. According to reports, ALPK1 mutations can lead to serious deficits in motor coordination in mice. ALPK1 can enhance the expression of pro-inflammatory cytokines, including IL-1, in cultured human THP1 and human embryonic kidney 293 (HEK293) cells (PMID: 31557402, PMID: 26275947) β-IL-8 and TGF-β1. The ALPK1 short subtype (108 kDa) is highly expressed in the brain, spinal cord, heart, lungs, spleen, thymus, small intestine, skin, and testes, while detecting skeletal muscle and kidney. ALPK1 isoform (130 kDa) appears in the heart, lungs, thymus, and skin. As a novel innate immune receptor, ALPK1 can recognize bacteria-derived small molecule ADP-heptose and activate the immune response (PubMed: 30111836, PubMed: 30111836)

Immunogen Information

Gene ID

71481

Swiss Prot

E9QNX4

Immunogen

Recombinant protein (or fragment). This information is considered to be commercially sensitive.

Synonyms

Alpha-kinase 1; ALPK1

Product Information

Source

Rabbit

Isotype

IgG

Purification

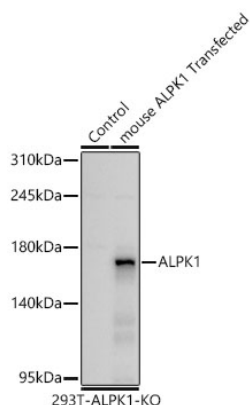
Affinity purification

Storage

Store at -20°C. Avoid freeze / thaw cycles.

Buffer: PBS containing 50% glycerol, preserved with proclin300 or sodium azide (as specified on the Certificate of Analysis), pH 7.3.

Validation Data



Western blot analysis of lysates from ALPK1 knockout (KO) 293T and ALPK1 knockout (KO) 293T transfected with mouse ALPK1 using ALPK1 Rabbit mAb (A24046) at 1:7000 dilution.

Secondary antibody: HRP-conjugated Goat anti-Rabbit IgG (H+L) (AS014) at 1:10000 dilution.

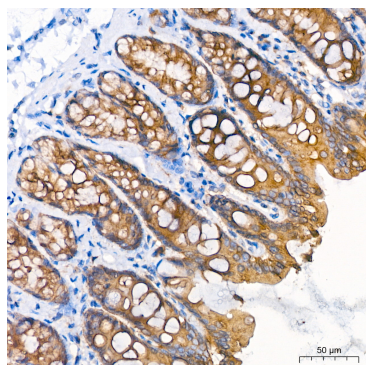
Lysates/proteins: 25 µg per lane.

Blocking buffer: 3% nonfat dry milk in TBST.

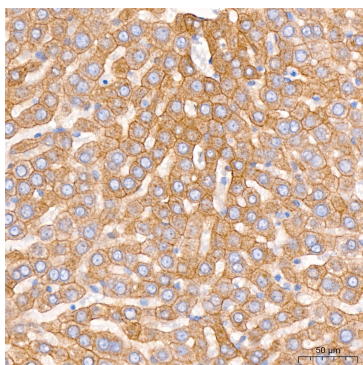
Detection: ECL Basic Kit (RM00020).

Exposure time: 45s.

WB samples for antibody validation are kindly provided by Dr. Feng Shao, NIBS



Immunohistochemistry analysis of paraffin-embedded rat colon tissue using ALPK1 Rabbit mAb (A24046) at a dilution of 1:200 (40x lens). High pressure antigen retrieval performed with 0.01M Citrate Buffer (pH 6.0) prior to IHC staining.



Immunohistochemistry analysis of paraffin-embedded Mouse liver tissue using ALPK1 Rabbit mAb (A24046) at a dilution of 1:200 (40x lens). High pressure antigen retrieval performed with 0.01M Citrate Buffer (pH 6.0) prior to IHC staining.