

A2413

Leader in Biomolecular Solutions for Life Science



SLC7A11/xCT Rabbit mAb

Catalog No.: A2413

Recombinant

130 Publications

Basic Information

Observed MW

35kDa

Calculated MW

55kDa

Category

SMab Recombinant Monoclonal
Antibody

Applications

WB,ELISA

Cross-Reactivity

Human,Mouse,Rat

CloneNo number

ARC0753

Background

This gene encodes a member of a heteromeric, sodium-independent, anionic amino acid transport system that is highly specific for cysteine and glutamate. In this system, designated Xc(-), the anionic form of cysteine is transported in exchange for glutamate. This protein has been identified as the predominant mediator of Kaposi sarcoma-associated herpesvirus fusion and entry permissiveness into cells. Also, increased expression of this gene in primary gliomas (compared to normal brain tissue) was associated with increased glutamate secretion via the XCT channels, resulting in neuronal cell death.

Recommended Dilutions

WB 1:500 - 1:1000

ELISA Recommended starting concentration is 1 µg/mL. Please optimize the concentration based on your specific assay requirements.

Immunogen Information

Gene ID

23657

Swiss Prot

Q9UPY5

Immunogen

Synthetic peptide. This information is considered to be commercially sensitive.

Synonyms

xCT; CCBR1; SLC7A11/xCT

Contact



www.abclonal.com

Product Information

Source

Rabbit

Isotype

IgG

Purification

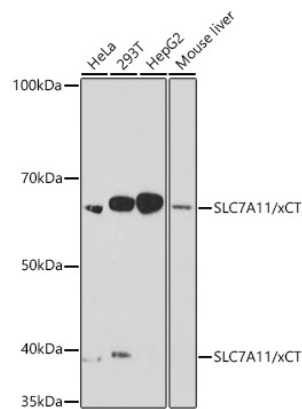
Affinity purification

Storage

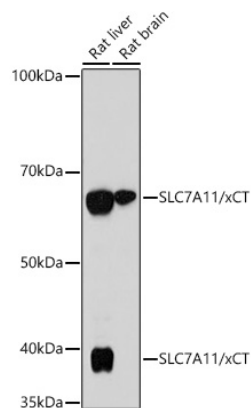
Store at -20°C. Avoid freeze / thaw cycles.

Buffer: PBS with 0.02% sodium azide,0.05% BSA,50% glycerol,pH7.3.

Validation Data



Western blot analysis of various lysates using SLC7A11/xCT Rabbit mAb (A2413) at 1:1000 dilution.
Secondary antibody: HRP-conjugated Goat anti-Rabbit IgG (H+L) (AS014) at 1:10000 dilution.
Lysates/proteins: 25µg per lane.
Blocking buffer: 3% nonfat dry milk in TBST.
Detection: ECL Basic Kit (RM00020).
Exposure time: 180s.



Western blot analysis of various lysates using SLC7A11/xCT Rabbit mAb (A2413) at 1:1000 dilution.
Secondary antibody: HRP-conjugated Goat anti-Rabbit IgG (H+L) (AS014) at 1:10000 dilution.
Lysates/proteins: 25µg per lane.
Blocking buffer: 3% nonfat dry milk in TBST.
Detection: ECL Enhanced Kit (RM00021).
Exposure time: 180s.