

A24235

Leader in Biomolecular Solutions for Life Science



# ABflo® 594 Rabbit anti-Human IL-5 mAb

Catalog No.: A24235

## Basic Information

### Observed MW

### Calculated MW

15kDa

### Category

SMab Recombinant Monoclonal  
Antibody

### Applications

FC (intra)

### Cross-Reactivity

Human

### CloneNo number

ARC53304-ABf594

### Conjugate

ABflo® 594. Ex:588nm. Em:604nm.

## Recommended Dilutions

**FC (intra)**      5 µl per 10<sup>6</sup> cells in  
100 µl volume

## Contact



[www.abclonal.com](http://www.abclonal.com)

## Background

This gene encodes a cytokine that acts as a growth and differentiation factor for both B cells and eosinophils. The encoded cytokine plays a major role in the regulation of eosinophil formation, maturation, recruitment and survival. The increased production of this cytokine may be related to pathogenesis of eosinophil-dependent inflammatory diseases. This cytokine functions by binding to its receptor, which is a heterodimer, whose beta subunit is shared with the receptors for interleukine 3 (IL3) and colony stimulating factor 2 (CSF2/GM-CSF). This gene is located on chromosome 5 within a cytokine gene cluster which includes interleukin 4 (IL4), interleukin 13 (IL13), and CSF2 . This gene, IL4, and IL13 may be regulated coordinately by long-range regulatory elements spread over 120 kilobases on chromosome 5q31.

## Immunogen Information

### Gene ID

3567

### Swiss Prot

P05113

### Immunogen

Recombinant protein (or fragment). This information is considered to be commercially sensitive.

### Synonyms

EDF; IL-5; TRF; interleukin-5

## Product Information

### Source

Rabbit

### Isotype

IgG

### Purification

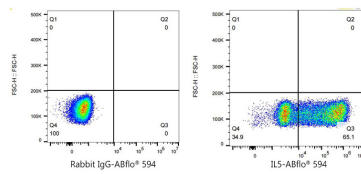
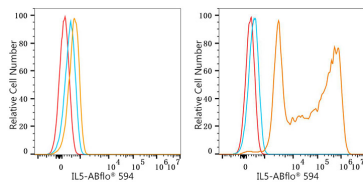
Affinity purification

### Storage

Store at 2-8°C. Avoid freeze.

Buffer: PBS containing 0.2% BSA, preserved with proclin300 or sodium azide (as specified on the Certificate of Analysis), pH 7.3.

## Validation Data



Flow cytometry:  $1 \times 10^6$  293T cells(negative control,left) and 293T (Transfection,right) were intracellularly-stained with ABflo® 594 Rabbit anti-Human IL5 mAb(A24235,5  $\mu$ l/Test,orange line) or ABflo® 594 Rabbit IgG isotype control (A23821,5  $\mu$ l/Test,blue line).Non-fluorescently stained cells were used as blank control (red line).

Flow cytometry: $1 \times 10^6$  293T(Transfection) cells were intracellularly-stained with ABflo® 594 Rabbit IgG isotype control (A23821,5  $\mu$ l/Test,left) or ABflo® 594 Rabbit anti-Human IL5 mAb(A24235,5  $\mu$ l/Test,right).