

A24341

Leader in Biomolecular Solutions for Life Science



Acetyl-Histone H3-K4 Rabbit mAb

Catalog No.: A24341

Recombinant

Basic Information

Observed MW

17kDa

Calculated MW

15kDa

Category

SMab Recombinant Monoclonal Antibody

Applications

WB,IHC-P,IP,ChIP,ELISA,DB

Cross-Reactivity

Human,Mouse,Rat,Other (Wide Range Predicted)

CloneNo number

ARC62519

Recommended Dilutions

WB 1:500 - 1:1000

DB 1:2000 - 1:5000

IHC-P 1:50 - 1:200

IP 0.5µg-4µg antibody for 200µg-400µg extracts of whole cells

ELISA Recommended starting concentration is 1 µg/mL. Please optimize the concentration based on your specific assay requirements.

ChIP 5µg antibody for 5µg-10µg of Chromatin

Contact

 www.abclonal.com

Background

Histones are basic nuclear proteins that are responsible for the nucleosome structure of the chromosomal fiber in eukaryotes. Nucleosomes consist of approximately 146 bp of DNA wrapped around a histone octamer composed of pairs of each of the four core histones (H2A, H2B, H3, and H4). The chromatin fiber is further compacted through the interaction of a linker histone, H1, with the DNA between the nucleosomes to form higher order chromatin structures. This gene is intronless and encodes a replication-dependent histone that is a member of the histone H3 family. Transcripts from this gene lack polyA tails; instead, they contain a palindromic termination element. This gene is located separately from the other H3 genes that are in the histone gene cluster on chromosome 6p22-p21.3.

Immunogen Information

Gene ID

8290/8350

Swiss Prot

Q16695/P68431

Immunogen

Synthetic peptide. This information is considered to be commercially sensitive.

Synonyms

H3t; H3.4; H3/g; H3FT; H3C16; HIST3H3; Acetyl-Histone H3-K4

Product Information

Source

Rabbit

Isotype

IgG

Purification

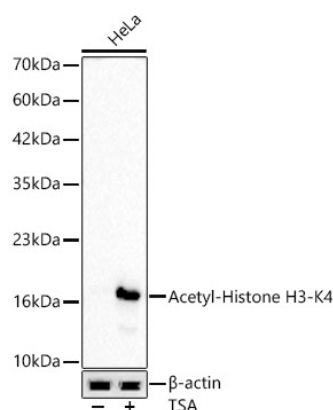
Affinity purification

Storage

Store at -20°C. Avoid freeze / thaw cycles.

Buffer: PBS containing 50% glycerol and 0.05% BSA, preserved with proclin300 or sodium azide (as specified on the Certificate of Analysis), pH 7.3.

Validation Data



Western blot analysis of lysates from HeLa cells, using Acetyl-Histone H3-K4 Rabbit mAb (A24341) at 1:1000 dilution. HeLa cells were treated with TSA (1 μ M) at 37°C for 18 hours.

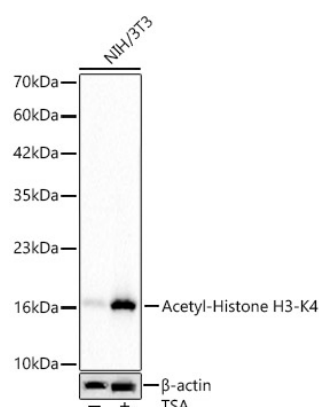
Secondary antibody: HRP-conjugated Goat anti-Rabbit IgG (H+L) (AS014) at 1:10000 dilution.

Lysates/proteins: 25 μ g per lane.

Blocking buffer: 3% nonfat dry milk in TBST.

Detection: ECL Basic Kit (RM00020).

Exposure time: 20s.



Western blot analysis of lysates from NIH/3T3 cells, using Acetyl-Histone H3-K4 Rabbit mAb (A24341) at 1:1000 dilution. NIH/3T3 cells were treated with TSA (1 μ M) at 37°C for 18 hours.

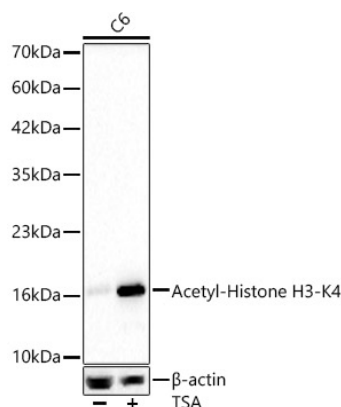
Secondary antibody: HRP-conjugated Goat anti-Rabbit IgG (H+L) (AS014) at 1:10000 dilution.

Lysates/proteins: 25 μ g per lane.

Blocking buffer: 3% nonfat dry milk in TBST.

Detection: ECL Basic Kit (RM00020).

Exposure time: 20s.



Western blot analysis of lysates from C6 cells, using Acetyl-Histone H3-K4 Rabbit mAb (A24341) at 1:1000 dilution. C6 cells were treated with TSA (1 μ M) at 37°C for 18 hours.

Secondary antibody: HRP-conjugated Goat anti-Rabbit IgG (H+L) (AS014) at 1:10000 dilution.

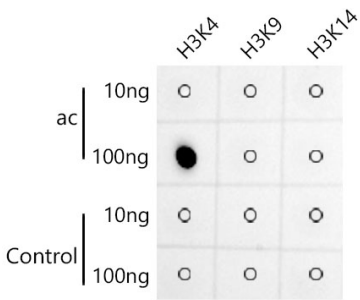
Lysates/proteins: 25 μ g per lane.

Blocking buffer: 3% nonfat dry milk in TBST.

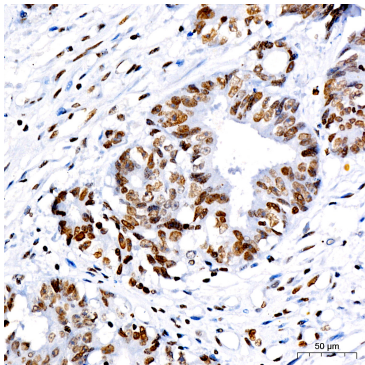
Detection: ECL Basic Kit (RM00020).

Exposure time: 20s.

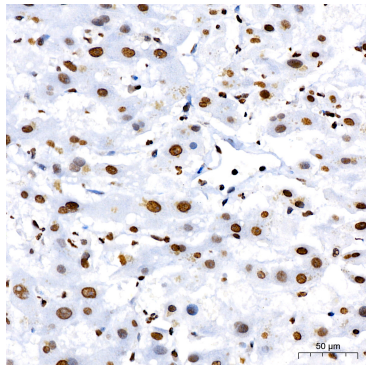
Validation Data



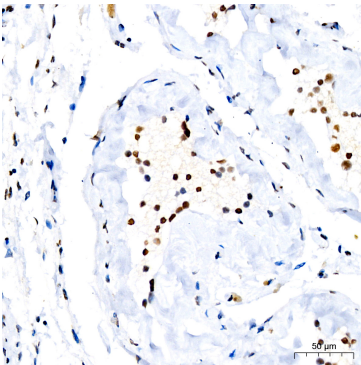
Dot-blot analysis of all sorts of peptides using Acetyl-Histone H3-K4 Rabbit mAb (A24341) at 1:1000 dilution.



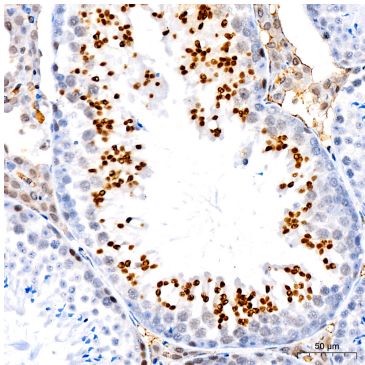
Immunohistochemistry analysis of paraffin-embedded Human colon carcinoma using Acetyl-Histone H3-K4 Rabbit mAb (A24341) at dilution of 1:200 (40x lens). High pressure antigen retrieval performed with 0.01M Citrate buffer (pH 6.0) prior to IHC staining.



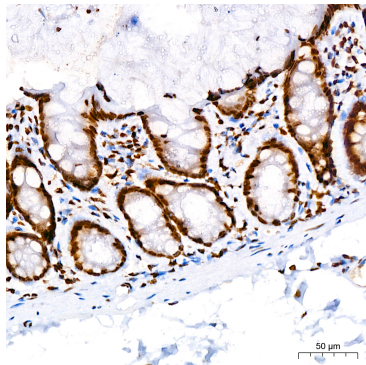
Immunohistochemistry analysis of paraffin-embedded Human liver using Acetyl-Histone H3-K4 Rabbit mAb (A24341) at dilution of 1:200 (40x lens). High pressure antigen retrieval performed with 0.01M Citrate buffer (pH 6.0) prior to IHC staining.



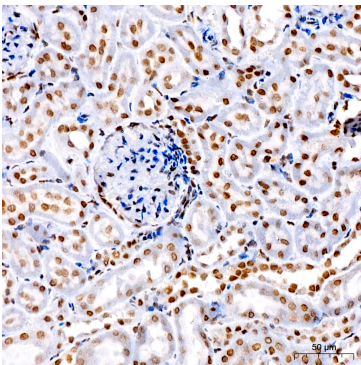
Immunohistochemistry analysis of paraffin-embedded Human testis using Acetyl-Histone H3-K4 Rabbit mAb (A24341) at dilution of 1:200 (40x lens). High pressure antigen retrieval performed with 0.01M Citrate buffer (pH 6.0) prior to IHC staining.



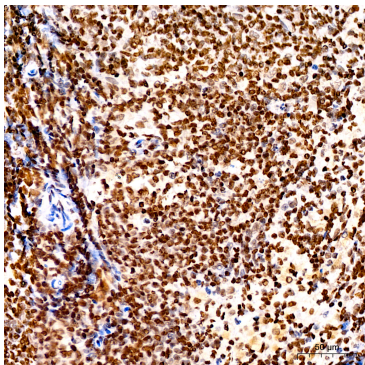
Immunohistochemistry analysis of paraffin-embedded Mouse testis using Acetyl-Histone H3-K4 Rabbit mAb (A24341) at dilution of 1:200 (40x lens). High pressure antigen retrieval performed with 0.01M Citrate buffer (pH 6.0) prior to IHC staining.



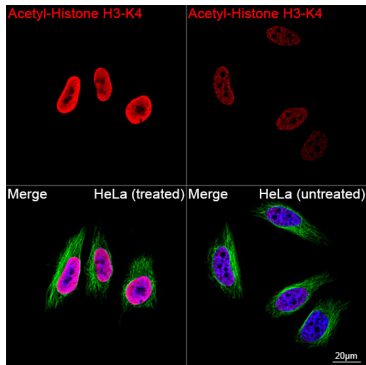
Immunohistochemistry analysis of paraffin-embedded Rat colon using Acetyl-Histone H3-K4 Rabbit mAb (A24341) at dilution of 1:200 (40x lens). High pressure antigen retrieval performed with 0.01M Citrate buffer (pH 6.0) prior to IHC staining.



Immunohistochemistry analysis of paraffin-embedded Rat kidney using Acetyl-Histone H3-K4 Rabbit mAb (A24341) at dilution of 1:200 (40x lens). High pressure antigen retrieval



Immunohistochemistry analysis of paraffin-embedded Rat spleen using Acetyl-Histone H3-K4 Rabbit mAb (A24341) at dilution of 1:200 (40x lens). High pressure antigen retrieval



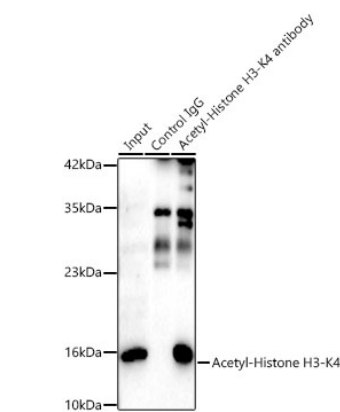
Confocal imaging of HeLa cells (treated with TSA) and HeLa cells (untreated) using Acetyl-Histone H3-K4 Rabbit mAb (A24341, dilution 1:200) followed by a further

Validation Data

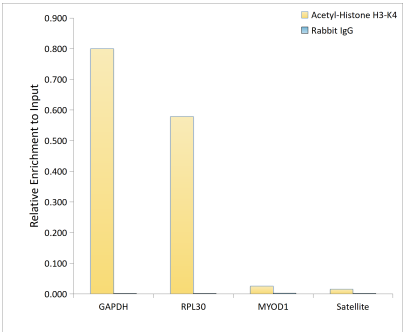
performed with 0.01M Citrate buffer (pH 6.0) prior to IHC staining.

performed with 0.01M Citrate buffer (pH 6.0) prior to IHC staining.

incubation with Cy3 Goat Anti-Rabbit IgG (H+L) (AS007, dilution 1:500) (Red). The cells were counterstained with α -Tubulin Mouse mAb (AC012, dilution 1:400) followed by incubation with ABflo® 488-conjugated Goat Anti-Mouse IgG (H+L) Ab (AS076, dilution 1:500) (Green). DAPI was used for nuclear staining (Blue). Objective: 100x.



Immunoprecipitation analysis of 600ug extracts of HeLa TSA cells using 5ug Acetyl-Histone H3-K4 Rabbit mAb (A24341). Western blot was performed from the immunoprecipitate using Acetyl-Histone H3-K4 Rabbit mAb at a dilution of 1:1000.



Chromatin immunoprecipitation analysis of extracts of HeLa cells, using Acetyl-Histone H3-K4 Rabbit mAb antibody (A24341) and rabbit IgG. The amount of immunoprecipitated DNA was checked by quantitative PCR. Histogram was constructed by the ratios of the immunoprecipitated DNA to the input.