

A24739

Leader in Biomolecular Solutions for Life Science



NINJ1 Rabbit mAb

Catalog No.: A24739

Recombinant

2 Publications

Basic Information

Observed MW

Refer to figures

Calculated MW

16kDa

Category

SMab Recombinant Monoclonal
Antibody

Applications

IF/ICC,ELISA

Cross-Reactivity

Mouse,Rat

CloneNo number

ARC63467

Background

The ninjurin protein is upregulated after nerve injury both in dorsal root ganglion neurons and in Schwann cells (Araki and Milbrandt, 1996 [PubMed 8780658]). It demonstrates properties of a homophilic adhesion molecule and promotes neurite outgrowth from primary cultured dorsal root ganglion neurons.

Recommended Dilutions

IF/ICC 1:50 - 1:200

ELISA Recommended starting concentration is 1 µg/mL. Please optimize the concentration based on your specific assay requirements.

Immunogen Information

Gene ID

4814

Swiss Prot

Q92982

Immunogen

Synthetic peptide. This information is considered to be commercially sensitive.

Synonyms

NIN1; NINJURIN; NINJ1

Contact

 www.abclonal.com

Product Information

Source

Rabbit

Isotype

IgG

Purification

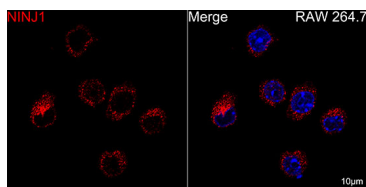
Affinity purification

Storage

Store at -20°C. Avoid freeze / thaw cycles.

Buffer: PBS with 0.05% proclin300,0.05% BSA,50% glycerol,pH7.3.

Validation Data



Confocal imaging of paraffin-embedded RAW 264.7 cells using NINJ1 Rabbit mAb (A24739, dilution 1:200) followed by a further incubation with Cy3 Goat Anti-Rabbit IgG (H+L) (AS007, dilution 1:500) (Red). DAPI was used for nuclear staining (Blue). Objective: 40x.