

A24912

Leader in Biomolecular Solutions for Life Science



DcR1/CD263 Rabbit mAb

Catalog No.: A24912

Recombinant

Basic Information

Observed MW

62kDa

Calculated MW

27kDa

Category

SMab Recombinant Monoclonal
Antibody

Applications

WB,IHC-P,FC,ELISA

Cross-Reactivity

Human

CloneNo number

ARC63904

Recommended Dilutions

WB 1:1000 - 1:5000

IHC-P 1:50 - 1:200

FC 1:100-1:500

ELISA Recommended starting
concentration is 1
µg/mL. Please optimize
the concentration
based on your specific
assay requirements.

Contact



www.abclonal.com

Background

The protein encoded by this gene is a member of the TNF-receptor superfamily. This receptor contains an extracellular TRAIL-binding domain and a transmembrane domain, but no cytoplasmic death domain. This receptor is not capable of inducing apoptosis, and is thought to function as an antagonistic receptor that protects cells from TRAIL-induced apoptosis. This gene was found to be a p53-regulated DNA damage-inducible gene. The expression of this gene was detected in many normal tissues but not in most cancer cell lines, which may explain the specific sensitivity of cancer cells to the apoptosis-inducing activity of TRAIL.

Immunogen Information

Gene ID

8794

Swiss Prot

O14798

Immunogen

Recombinant protein (or fragment). This information is considered to be commercially sensitive.

Synonyms

TNFRSF10C; CD263; DCR1; DCR1-TNFR; LIT; TRAIL-R3; TRAILR3; TRID; TNF receptor superfamily member 10c; DcR1/CD263

Product Information

Source

Rabbit

Isotype

IgG

Purification

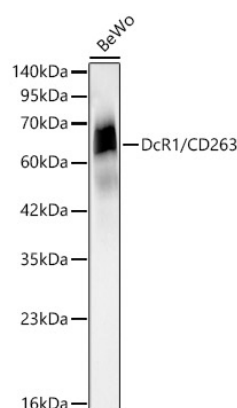
Affinity purification

Storage

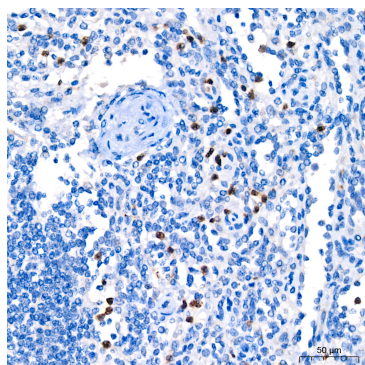
Store at -20°C. Avoid freeze / thaw cycles.

Buffer: PBS containing 50% glycerol and 0.05% BSA, preserved with proclin300 or sodium azide (as specified on the Certificate of Analysis), pH 7.3.

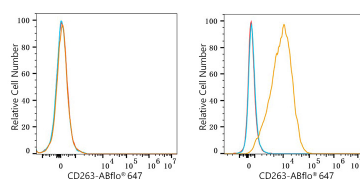
Validation Data



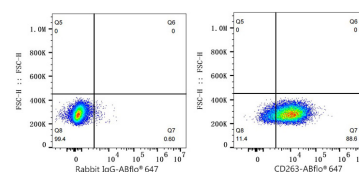
Western blot analysis of lysates from BeWo cells using DcR1/CD263 Rabbit mAb (A24912) at 1:2000 dilution.
 Secondary antibody: HRP-conjugated Goat anti-Rabbit IgG (H+L) (AS014) at 1:10000 dilution.
 Lysates/proteins: 25µg per lane.
 Blocking buffer: 3% nonfat dry milk in TBST.
 Detection: ECL Basic Kit (RM00020).
 Exposure time: 30s.



Immunohistochemistry analysis of paraffin-embedded Human spleen tissue using DcR1/CD263 Rabbit mAb (A24912) at a dilution of 1:200 (40x lens). High pressure antigen retrieval performed with 0.01M Citrate buffer (pH 6.0) prior to IHC staining.



Flow cytometry: 1×10^6 K-562 cells (Low Expression, left) and BEWO cells (right) were surface-stained with DcR1/CD263 Rabbit mAb (A24912, 2 µg/mL, orange line) or ABflo® 647 Rabbit IgG isotype control (A22070, 5 µl/Test, blue line), followed by Alexa Fluor® 647 conjugated goat anti-rabbit pAb staining. Non-fluorescently stained cells were used as blank control (red line).



Flow cytometry: 1×10^6 BEWO cells were surface-stained with ABflo® 647 Rabbit IgG isotype control (A22070, 5 µl/Test, left) or DcR1/CD263 Rabbit mAb (A24912, 2 µg/mL, right).