

A24921

Leader in Biomolecular Solutions for Life Science



CD267/TACI Rabbit mAb

Catalog No.: A24921

Recombinant

Basic Information

Observed MW

Refer to figures

Calculated MW

27kDa

Category

SMab Recombinant Monoclonal
Antibody

Applications

FC

Cross-Reactivity

Mouse

CloneNo number

ARC62807

Background

Acts upstream of or within B cell homeostasis; hematopoietic progenitor cell differentiation; and negative regulation of B cell proliferation. Located in external side of plasma membrane. Is integral component of plasma membrane. Is expressed in renal vasculature. Used to study systemic lupus erythematosus. Human ortholog(s) of this gene implicated in common variable immunodeficiency. Orthologous to human TNFRSF13B (TNF receptor superfamily member 13B).

Recommended Dilutions

FC 1:500 - 1:1000

Immunogen Information

Gene ID

57916

Swiss Prot

Q9ET35

Immunogen

Recombinant protein (or fragment). This information is considered to be commercially sensitive.

Synonyms

Taci; 1200009E08Rik; CD267/TACI

Contact



www.abclonal.com

Product Information

Source

Rabbit

Isotype

IgG

Purification

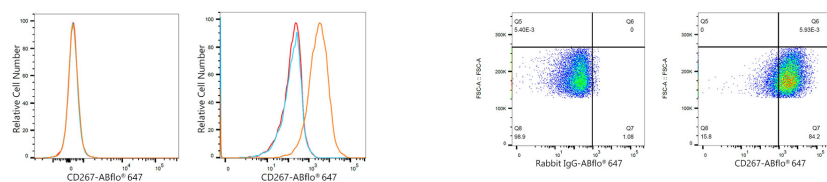
Affinity purification

Storage

Store at -20°C. Avoid freeze / thaw cycles.

Buffer: PBS containing 50% glycerol and 0.05% BSA, preserved with proclin300 or sodium azide (as specified on the Certificate of Analysis), pH 7.3.

Validation Data



Flow cytometry: 1×10^6 Neuro-2a cells (negative control, left) and A20 cells (right) were surface-stained with CD267/TACI Rabbit mAb (A24921, 2 $\mu\text{g}/\text{mL}$, orange line) or ABflo® 647 Rabbit IgG isotype control (A22070, 5 $\mu\text{l}/\text{test}$, blue line), followed by Alexa Fluor® 647 conjugated goat anti-rabbit pAb staining. Non-fluorescently stained cells were used as blank control (red line).

Flow cytometry: 1×10^6 A20 cells were surface-stained with ABflo® 647 Rabbit IgG isotype control (A22070, 5 $\mu\text{l}/\text{test}$, left) or CD267/TACI Rabbit mAb (A24921, 2 $\mu\text{g}/\text{mL}$, right).