

A24935

Leader in Biomolecular Solutions for Life Science



# ABflo® 488 Rabbit anti-Mouse CD16 mAb

Catalog No.: A24935

## Basic Information

### Observed MW

### Calculated MW

30kDa

### Category

SMab Recombinant Monoclonal Antibody

### Applications

FC

### Cross-Reactivity

Mouse

### CloneNo number

ARC64354-ABflo488

### Conjugate

ABflo® 488. Ex:491nm. Em:516nm.

## Recommended Dilutions

**FC** 5 µl per 10<sup>6</sup> cells in  
100 µl volume

## Contact



[www.abclonal.com](http://www.abclonal.com)

## Background

Enables IgG binding activity and IgG receptor activity. Acts upstream of or within several processes, including antibody-dependent cellular cytotoxicity; phagocytosis; and positive regulation of hypersensitivity. Located in external side of plasma membrane. Is expressed in liver and spleen. Human ortholog(s) of this gene implicated in several diseases, including autoimmune disease (multiple); dengue disease (multiple); hematologic cancer (multiple); leukopenia (multiple); and malaria (multiple). Orthologous to human FCGR2A (Fc fragment of IgG receptor IIa).

## Immunogen Information

### Gene ID

14131

### Swiss Prot

A0A0B4J1M6

### Immunogen

Recombinant protein (or fragment). This information is considered to be commercially sensitive.

### Synonyms

CD16

## Product Information

### Source

Rabbit

### Isotype

IgG

### Purification

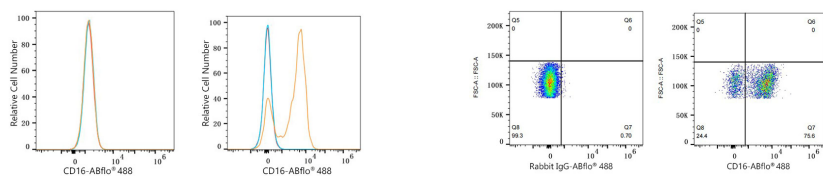
Affinity purification

### Storage

Store at 2-8°C. Avoid freeze.

Buffer: PBS containing 0.2% BSA, preserved with proclin300 or sodium azide (as specified on the Certificate of Analysis), pH 7.3.

## Validation Data



Flow cytometry:  $1 \times 10^6$  Neuro-2a cells (negative control, left) and C57BL/6 mouse Splenocytes (right) were surface-stained with ABflo® 488 Rabbit anti-Mouse CD16 mAb (A24935, 5  $\mu$ l/Test, orange line) or ABflo® 488 Rabbit IgG isotype control (A22069, 5  $\mu$ l/Test, blue line). Non-fluorescently stained cells were used as blank control (red line).

Flow cytometry:  $1 \times 10^6$  C57BL/6 mouse Splenocytes were surface-stained with ABflo® 488 Rabbit IgG isotype control (A22069, 5  $\mu$ l/Test, left) or ABflo® 488 Rabbit anti-Mouse CD16 mAb (A24935, 5  $\mu$ l/Test, right).