

A24945

Leader in Biomolecular Solutions for Life Science



TCIRG1 Rabbit mAb

Catalog No.: A24945

Recombinant

1 Publications

Basic Information

Observed MW

93kDa

Calculated MW

93kDa

Category

SMab Recombinant Monoclonal
Antibody

Applications

WB,IHC-P,IF/ICC,ELISA

Cross-Reactivity

Human,Mouse,Rat

CloneNo number

ARC64630

Background

This gene encodes a subunit of a large protein complex known as a vacuolar H⁺-ATPase (V-ATPase). The protein complex acts as a pump to move protons across the membrane. This movement of protons helps regulate the pH of cells and their surrounding environment. V-ATPase dependent organelle acidification is necessary for such intracellular processes as protein sorting, zymogen activation, and receptor-mediated endocytosis. V-ATPase is comprised of a cytosolic V1 domain and a transmembrane V0 domain. Alternative splicing results in multiple transcript variants. Mutations in this gene are associated with infantile malignant osteopetrosis.

Recommended Dilutions

WB 1:2000 - 1:8000

IHC-P 1:200 - 1:800

IF/ICC 1:200 - 1:800

ELISA Recommended starting concentration is 1 µg/mL. Please optimize the concentration based on your specific assay requirements.

Immunogen Information

Gene ID

10312

Swiss Prot

Q13488

Immunogen

Recombinant protein (or fragment). This information is considered to be commercially sensitive.

Synonyms

a3; Stv1; Vph1; Atp6i; OC116; OPTB1; TIRC7; ATP6N1C; ATP6V0A3; OC-116kDa; TCIRG1

Product Information

Source

Rabbit

Isotype

IgG

Purification

Affinity purification

Storage

Store at -20°C. Avoid freeze / thaw cycles.

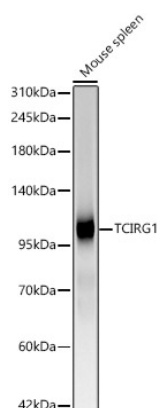
Buffer: PBS containing 50% glycerol and 0.05% BSA, preserved with proclin300 or sodium azide (as specified on the Certificate of Analysis), pH 7.3.

Contact



www.abclonal.com

Validation Data



Western blot analysis of lysates from Mouse spleen, using TCIRG1 Rabbit mAb (A24945) at 1:4000 dilution.

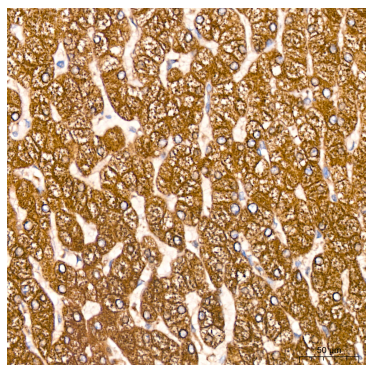
Secondary antibody: HRP-conjugated Goat anti-Rabbit IgG (H+L) (AS014) at 1:10000 dilution.

Lysates/proteins: 25µg per lane.

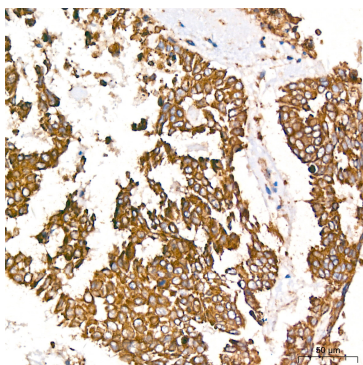
Blocking buffer: 3% nonfat dry milk in TBST.

Detection: ECL Basic Kit (RM00020).

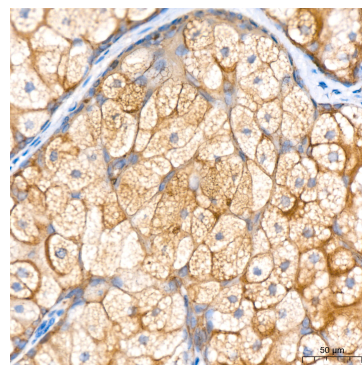
Exposure time: 45s.



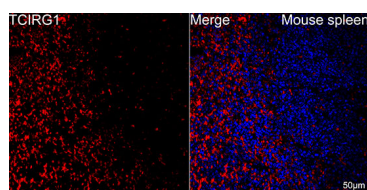
Immunohistochemistry analysis of paraffin-embedded Human liver cancer tissue using TCIRG1 Rabbit mAb (A24945) at a dilution of 1:300 (40x lens). High pressure antigen retrieval performed with 0.01M Citrate buffer (pH 6.0) prior to IHC staining.



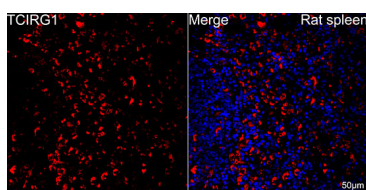
Immunohistochemistry analysis of paraffin-embedded Human lung cancer tissue using TCIRG1 Rabbit mAb (A24945) at a dilution of 1:300 (40x lens). High pressure antigen retrieval performed with 0.01M Citrate buffer (pH 6.0) prior to IHC staining.



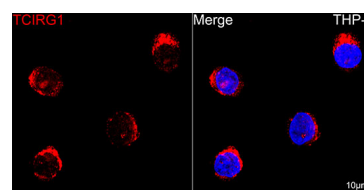
Immunohistochemistry analysis of paraffin-embedded Human skin tissue using TCIRG1 Rabbit mAb (A24945) at a dilution of 1:300 (40x lens). High pressure antigen retrieval performed with 0.01M Citrate buffer (pH 6.0) prior to IHC staining.



Confocal imaging of paraffin-embedded mouse spleen using TCIRG1 Rabbit mAb (A24945, dilution 1:200) followed by a further incubation with Cy3 Goat Anti-Rabbit IgG (H+L) (AS007, dilution 1:500) (Red). DAPI was used for nuclear staining (Blue). Objective: 40x.



Confocal imaging of paraffin-embedded rat spleen using TCIRG1 Rabbit mAb (A24945, dilution 1:200) followed by a further incubation with Cy3 Goat Anti-Rabbit IgG (H+L) (AS007, dilution 1:500) (Red). DAPI was used for nuclear staining (Blue). Objective: 40x.



Confocal imaging of THP-1 cells using TCIRG1 Rabbit mAb (A24945, dilution 1:200) followed by a further incubation with Cy3 Goat Anti-Rabbit IgG (H+L) (AS007, dilution 1:500) (Red). DAPI was used for nuclear staining (Blue). Objective: 100x.