

A24951

Leader in Biomolecular Solutions for Life Science



α -Synuclein Rabbit mAb

Catalog No.: A24951

Recombinant

Basic Information

Observed MW

18kDa

Calculated MW

14kDa

Category

SMab Recombinant Monoclonal
Antibody

Applications

WB,IF/ICC,IP,ELISA

Cross-Reactivity

Human,Mouse,Rat

CloneNo number

ARC64510

Background

Alpha-synuclein is a member of the synuclein family, which also includes beta- and gamma-synuclein. Synucleins are abundantly expressed in the brain and alpha- and beta-synuclein inhibit phospholipase D2 selectively. SNCA may serve to integrate presynaptic signaling and membrane trafficking. Defects in SNCA have been implicated in the pathogenesis of Parkinson disease. SNCA peptides are a major component of amyloid plaques in the brains of patients with Alzheimer's disease. Alternatively spliced transcripts encoding different isoforms have been identified for this gene.

Recommended Dilutions

WB 1:3500 - 1:7000

IF/ICC 1:200 - 1:800

IP 0.5 μ g-4 μ g antibody for
400 μ g-800 μ g extracts
of whole cells

ELISA Recommended starting
concentration is 1
 μ g/mL. Please optimize
the concentration
based on your specific
assay requirements.

Contact

 www.abclonal.com

Immunogen Information

Gene ID

6622

Swiss Prot

P37840

Immunogen

Recombinant protein (or fragment). This information is considered to be commercially sensitive.

Synonyms

PD1; NACP; PARK1; PARK4; α -Synuclein

Product Information

Source

Rabbit

Isotype

IgG

Purification

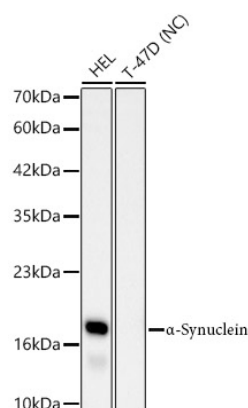
Affinity purification

Storage

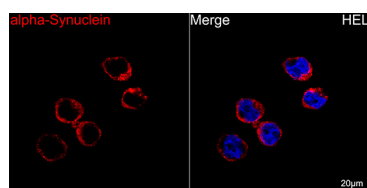
Store at -20°C. Avoid freeze / thaw cycles.

Buffer: PBS containing 50% glycerol and 0.05% BSA, preserved with proclin300 or sodium azide (as specified on the Certificate of Analysis), pH 7.3.

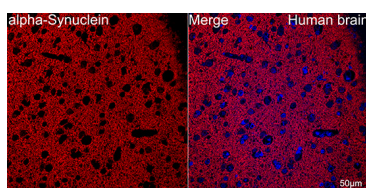
Validation Data



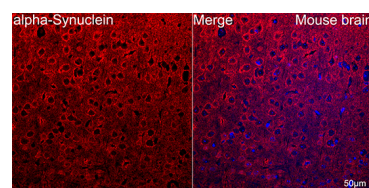
Western blot analysis of various lysates using α -Synuclein Rabbit mAb (A24951) at 1:7000 dilution.
 Secondary antibody: HRP-conjugated Goat anti-Rabbit IgG (H+L) (AS014) at 1:10000 dilution.
 Lysates/proteins: 25 μ g per lane.
 Blocking buffer: 3% nonfat dry milk in TBST.
 Detection: ECL Basic Kit (RM00020).
 Negative control (NC): T-47D
 Exposure time: 90s.



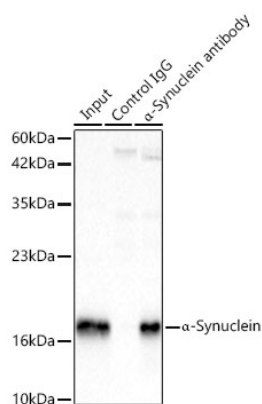
Confocal imaging of HEL cells using α -Synuclein Rabbit mAb (A24951, dilution 1:200) followed by a further incubation with Cy3 Goat Anti-Rabbit IgG (H+L) (AS007, dilution 1:500) (Red). DAPI was used for nuclear staining (Blue). Objective: 100x.



Confocal imaging of paraffin-embedded human brain using α -Synuclein Rabbit mAb (A24951, dilution 1:200) followed by a further incubation with Cy3 Goat Anti-Rabbit IgG (H+L) (AS007, dilution 1:500) (Red). DAPI was used for nuclear staining (Blue). Objective: 40x. Perform high pressure antigen retrieval with 0.01M citrate buffer (pH 6.0) prior to IF staining.



Confocal imaging of paraffin-embedded mouse brain using α -Synuclein Rabbit mAb (A24951, dilution 1:200) followed by a further incubation with Cy3 Goat Anti-Rabbit IgG (H+L) (AS007, dilution 1:500) (Red). DAPI was used for nuclear staining (Blue). Objective: 40x. Perform high pressure antigen retrieval with 0.01M citrate buffer (pH 6.0) prior to IF staining.



Immunoprecipitation of α -Synuclein in 600 μ g extracts from Mouse brain using 3 μ g α -Synuclein Rabbit mAb (A24951). Western blot analysis was performed using α -Synuclein Rabbit mAb (A24951) at 1:1000 dilution.