

A24952

Leader in Biomolecular Solutions for Life Science



# TCL1 Rabbit mAb

Catalog No.: A24952

Recombinant

## Basic Information

### Observed MW

16kDa

### Calculated MW

13kDa

### Category

SMab Recombinant Monoclonal  
Antibody

### Applications

WB,IF/ICC,ELISA

### Cross-Reactivity

Human

### CloneNo number

ARC64961

## Recommended Dilutions

**WB** 1:1000 - 1:4000

**IF/ICC** 1:200 - 1:800

**ELISA** Recommended starting concentration is 1 µg/mL. Please optimize the concentration based on your specific assay requirements.

## Contact

 [www.abclonal.com](http://www.abclonal.com)

## Background

Overexpression of the TCL1 gene in humans has been implicated in the development of mature T cell leukemia, in which chromosomal rearrangements bring the TCL1 gene in close proximity to the T-cell antigen receptor (TCR)-alpha (MIM 186880) or TCR-beta (MIM 186930) regulatory elements (summarized by Virgilio et al., 1998 [PubMed 9520462]). In normal T cells TCL1 is expressed in CD4-/CD8- cells, but not in cells at later stages of differentiation. TCL1 functions as a coactivator of the cell survival kinase AKT (MIM 164730) (Laine et al., 2000 [PubMed 10983986]).

## Immunogen Information

### Gene ID

8115

### Swiss Prot

P56279

### Immunogen

Recombinant protein (or fragment). This information is considered to be commercially sensitive.

### Synonyms

TCL1

## Product Information

### Source

Rabbit

### Isotype

IgG

### Purification

Affinity purification

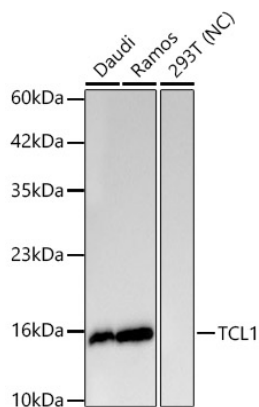
### Storage

Store at -20°C. Avoid freeze / thaw cycles.

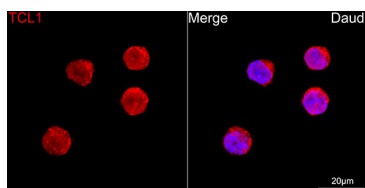
Buffer: PBS containing 50% glycerol and 0.05% BSA, preserved with proclin300 or sodium azide (as specified on the Certificate of Analysis), pH 7.3.



## Validation Data



Western blot analysis of various lysates using TCL1 Rabbit mAb (A24952) at 1:1000 dilution.  
Secondary antibody: HRP-conjugated Goat anti-Rabbit IgG (H+L) (AS014) at 1:10000 dilution.  
Lysates/proteins: 25µg per lane.  
Blocking buffer: 3% nonfat dry milk in TBST.  
Detection: ECL Basic Kit (RM00020).  
Negative control (NC): 293T  
Exposure time: 20s.



Confocal imaging of Daudi cells using TCL1 Rabbit mAb (A24952, dilution 1:200) followed by a further incubation with Cy3 Goat Anti-Rabbit IgG (H+L) (AS007, dilution 1:500) (Red). DAPI was used for nuclear staining (Blue). Objective: 100x.