

A24955

Leader in Biomolecular Solutions for Life Science



NG2/CSPG4 Rabbit mAb

Catalog No.: A24955

Recombinant

2 Publications

Basic Information

Observed MW

450kDa

Calculated MW

251kDa

Category

SMab Recombinant Monoclonal
Antibody

Applications

WB,IHC-P,IF/ICC,FC,ELISA

Cross-Reactivity

Human,Mouse

CloneNo number

ARC64580

Background

A human melanoma-associated chondroitin sulfate proteoglycan plays a role in stabilizing cell-substratum interactions during early events of melanoma cell spreading on endothelial basement membranes. CSPG4 represents an integral membrane chondroitin sulfate proteoglycan expressed by human malignant melanoma cells.

Recommended Dilutions

WB 1:1000 - 1:2000

IHC-P 1:500 - 1:2000

IF/ICC 1:200 - 1:1000

FC 1:500 - 1:1000

ELISA Recommended starting concentration is 1 µg/mL. Please optimize the concentration based on your specific assay requirements.

Immunogen Information

Gene ID

1464

Swiss Prot

Q6UVK1

Immunogen

Recombinant protein (or fragment). This information is considered to be commercially sensitive.

Synonyms

NG2; MCSP; MCSPG; MSK16; CSPG4A; HMW-MAA; MEL-CSPG; NG2/CSPG4

Product Information

Source

Rabbit

Isotype

IgG

Purification

Affinity purification

Storage

Store at -20°C. Avoid freeze / thaw cycles.

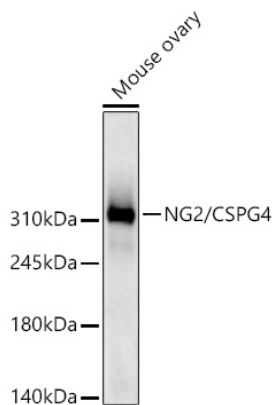
Buffer: PBS containing 50% glycerol and 0.05% BSA, preserved with proclin300 or sodium azide (as specified on the Certificate of Analysis), pH 7.3.

Contact

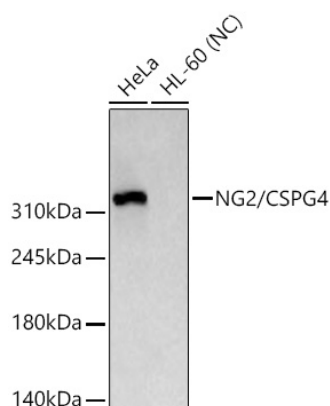


www.abclonal.com

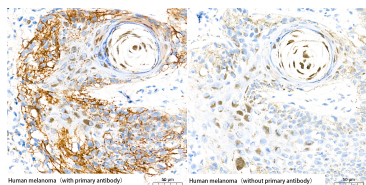
Validation Data



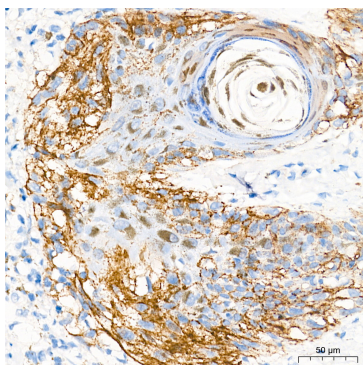
Western blot analysis of lysates from Mouse ovary using NG2/CSPG4 Rabbit mAb (A24955) at 1:1000 dilution incubated overnight at 4°C.
Secondary antibody: HRP-conjugated Goat anti-Rabbit IgG (H+L) (AS014) at 1:10000 dilution.
Lysates/proteins: 25 µg per lane.
Blocking buffer: 3% nonfat dry milk in TBST.
Detection: ECL Basic Kit (RM00020).
Exposure time: 60s.



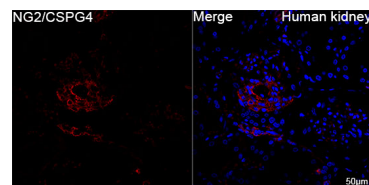
Western blot analysis of various lysates using NG2/CSPG4 Rabbit mAb (A24955) at 1:1000 dilution incubated overnight at 4°C.
Secondary antibody: HRP-conjugated Goat anti-Rabbit IgG (H+L) (AS014) at 1:10000 dilution.
Lysates/proteins: 25 µg per lane.
Blocking buffer: 3% nonfat dry milk in TBST.
Detection: ECL Basic Kit (RM00020).
Negative control (NC): HL-60
Exposure time: 10s.



Immunohistochemistry analysis of paraffin-embedded Human malignant melanoma (positive control and blank control) tissue using NG2/CSPG4 Rabbit mAb (A24955) at a dilution of 1:1000 (40x lens). High pressure antigen retrieval performed with 0.01M Tris-EDTA Buffer (pH 9.0) prior to IHC staining.

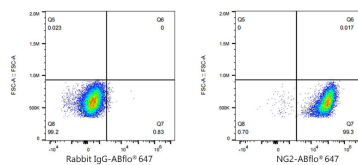
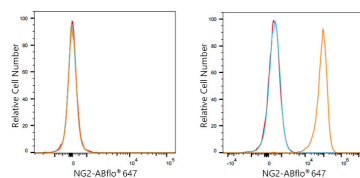


Immunohistochemistry analysis of paraffin-embedded Human malignant melanoma tissue using NG2/CSPG4 Rabbit mAb (A24955) at a dilution of 1:1000 (40x lens). High pressure antigen retrieval performed with 0.01M Tris-EDTA Buffer (pH 9.0) prior to IHC staining.



Confocal imaging of paraffin-embedded Human kidney tissue using NG2/CSPG4 Rabbit mAb (A24955, dilution 1:800) followed by a further incubation with Cy3 Goat Anti-Rabbit IgG (H+L) (AS007, dilution 1:500) (Red). DAPI was used for nuclear staining (Blue). High pressure antigen retrieval performed with 0.01M Citrate Buffer (pH 6.0) prior to IF staining. Objective: 40x.

Validation Data



Flow cytometry: 1×10^6 Jurkat cells (negative control, left) and SK-MEL-28 cells (right) were surface-stained with NG2/CSPG4 Rabbit mAb (A24955, 2 μ g/mL, orange line) or ABflo® 647 Rabbit IgG isotype control (A22070, 5 μ l/Test, blue line), followed by Alexa Fluor® 647 conjugated goat anti-rabbit pAb staining. Non-fluorescently stained cells were used as blank control (red line).

Flow cytometry: 1×10^6 SK-MEL-28 cells were surface-stained with ABflo® 647 Rabbit IgG isotype control (A22070, 5 μ l/Test, left) or NG2/CSPG4 Rabbit mAb (A24955, 2 μ g/mL, right).