

A24956

Leader in Biomolecular Solutions for Life Science



# ABflo® 488 Rabbit anti-Human CD101/IGSF2 mAb

Catalog No.: A24956

## Basic Information

### Observed MW

### Calculated MW

115kDa

### Category

SMab Recombinant Monoclonal  
Antibody

### Applications

IF/ICC,FC

### Cross-Reactivity

Human

### CloneNo number

ARC62615-ABflo488

### Conjugate

ABflo® 488. Ex:491nm. Em:516nm.

## Recommended Dilutions

IF/ICC 1:50 - 1:200

FC 5 µl per 10<sup>6</sup> cells in  
100 µl volume

## Contact



[www.abclonal.com](http://www.abclonal.com)

## Background

Predicted to enable hydrolase activity, acting on carbon-nitrogen (but not peptide) bonds, in cyclic amides. Predicted to be involved in cell surface receptor signaling pathway. Predicted to act upstream of or within positive regulation of myeloid leukocyte differentiation. Located in extracellular exosome.

## Immunogen Information

### Gene ID

9398

### Swiss Prot

Q93033

### Immunogen

Recombinant protein (or fragment). This information is considered to be commercially sensitive.

### Synonyms

V7; IGSF2; EWI-101

## Product Information

### Source

Rabbit

### Isotype

IgG

### Purification

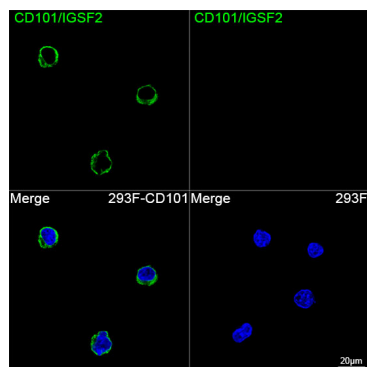
Affinity purification

### Storage

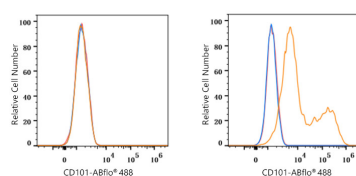
Store at 2-8°C. Avoid freeze.

Buffer: PBS containing 0.2% BSA, preserved with proclin300 or sodium azide (as specified on the Certificate of Analysis), pH 7.3.

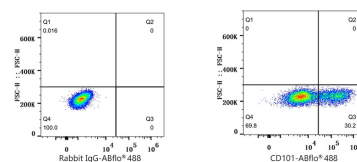
## Validation Data



Confocal imaging of 293F cells transfected with CD101 using ABflo® 488 Rabbit anti-Human CD101/IGSF2 mAb (A24956, dilution 1:100). DAPI was used for nuclear staining (Blue). Objective: 100x.



Flow cytometry:  $1 \times 10^6$  293F cells (negative control, left) and 293F (Transfection, right) cells were surface-stained with ABflo® 488 Rabbit anti-Human CD101/IGSF2 mAb (A24956, 5 µl/Test, orange line) or ABflo® 488 Rabbit IgG isotype control (A22069, 5 µl/Test, blue line). Non-fluorescently stained cells were used as blank control (red line).



Flow cytometry:  $1 \times 10^6$  293F (Transfection) cells were surface-stained with ABflo® 488 Rabbit IgG isotype control (A22069, 5 µl/Test, left) or ABflo® 488 Rabbit anti-Human CD101/IGSF2 mAb (A24956, 5 µl/Test, right).