

A24984

Leader in Biomolecular Solutions for Life Science



# ABflo® 647 Rabbit anti-Mouse CD130/gp130 mAb

Catalog No.: A24984

## Basic Information

### Observed MW

### Calculated MW

102kDa

### Category

SMab Recombinant Monoclonal  
Antibody

### Applications

FC

### Cross-Reactivity

Mouse

### CloneNo number

ARC64569-ABflo647

### Conjugate

ABflo® 647. Ex:648nm. Em:664nm.

## Recommended Dilutions

FC 5 µl per 10<sup>6</sup> cells in  
100 µl volume

## Contact



[www.abclonal.com](http://www.abclonal.com)

## Background

Contributes to interleukin-11 binding activity and interleukin-11 receptor activity. Involved in interleukin-6-mediated signaling pathway; intestinal epithelial cell development; and positive regulation of Notch signaling pathway. Acts upstream of or within several processes, including glycogen metabolic process; positive regulation of astrocyte differentiation; and regulation of Notch signaling pathway. Located in dendrite; external side of plasma membrane; and neuronal cell body. Is expressed in several structures, including alimentary system; brain; early conceptus; immune system; and reproductive system. Used to study rheumatoid arthritis and stomach cancer. Human ortholog(s) of this gene implicated in arteriosclerosis; hyper IgE recurrent infection syndrome 4; and hyperandrogenism. Orthologous to human IL6ST (interleukin 6 cytokine family signal transducer).

## Immunogen Information

### Gene ID

16195

### Swiss Prot

Q00560

### Immunogen

Recombinant protein (or fragment). This information is considered to be commercially sensitive.

### Synonyms

CD130; gp130; D13Ert699e; 5133400A03Rik

## Product Information

### Source

Rabbit

### Isotype

IgG

### Purification

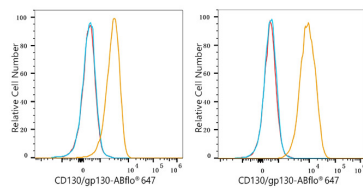
Affinity purification

### Storage

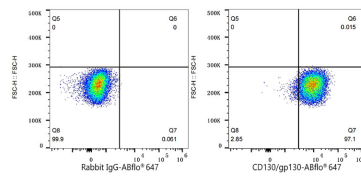
Store at 2-8°C. Avoid freeze.

Buffer: PBS containing 0.2% BSA, preserved with proclin300 or sodium azide (as specified on the Certificate of Analysis), pH 7.3.

## Validation Data



Flow cytometry:  $1 \times 10^6$  Neuro-2a cells (Low Expression, left) and NIH/3T3 cells (right) were surface-stained with ABflo® 647 Rabbit anti-Mouse CD130/gp130 mAb (A24984, 5  $\mu$ l/Test, orange line) or ABflo® 647 Rabbit IgG isotype control (A22070, 5  $\mu$ l/Test, blue line). Non-fluorescently stained cells were used as blank control (red line).



Flow cytometry:  $1 \times 10^6$  NIH/3T3 cells were surface-stained with ABflo® 647 Rabbit IgG isotype control (A22070, 5  $\mu$ l/Test, left) or ABflo® 647 Rabbit anti-Mouse CD130/gp130 mAb (A24984, 5  $\mu$ l/Test, right).