

A24989

Leader in Biomolecular Solutions for Life Science



# ABflo® 647 Rabbit anti-Human Nectin-1/CD111 mAb

Catalog No.: A24989

## Basic Information

### Observed MW

### Calculated MW

57kDa/51kDa/39kDa

### Category

SMab Recombinant Monoclonal Antibody

### Applications

FC

### Cross-Reactivity

Human

### CloneNo number

ARC65140-ABflo647

### Conjugate

ABflo® 647. Ex:648nm. Em:664nm.

## Recommended Dilutions

FC 5 µl per 10<sup>6</sup> cells in 100 µl volume

## Contact



[www.abclonal.com](http://www.abclonal.com)

## Background

This gene encodes an adhesion protein that plays a role in the organization of adherens junctions and tight junctions in epithelial and endothelial cells. The protein is a calcium(2+)-independent cell-cell adhesion molecule that belongs to the immunoglobulin superfamily and has 3 extracellular immunoglobulin-like loops, a single transmembrane domain (in some isoforms), and a cytoplasmic region. This protein acts as a receptor for glycoprotein D (gD) of herpes simplex viruses 1 and 2 (HSV-1, HSV-2), and pseudorabies virus (PRV) and mediates viral entry into epithelial and neuronal cells. Mutations in this gene cause cleft lip and palate/ectodermal dysplasia 1 syndrome (CLPED1) as well as non-syndromic cleft lip with or without cleft palate (CL/P). Alternative splicing results in multiple transcript variants encoding proteins with distinct C-termini.

## Immunogen Information

### Gene ID

5818

### Swiss Prot

Q15223

### Immunogen

Recombinant protein (or fragment). This information is considered to be commercially sensitive.

### Synonyms

ED4; PRR; HIgR; HV1S; HVEC; OFC7; PRR1; PVRR; CD111; PVRL1; PVRR1; SK-12; CLPED1; nectin-1

## Product Information

### Source

Rabbit

### Isotype

IgG

### Purification

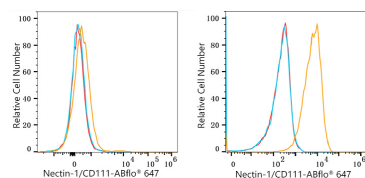
Affinity purification

### Storage

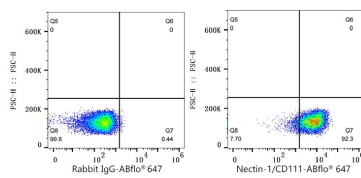
Store at 2-8°C. Avoid freeze.

Buffer: PBS containing 0.2% BSA, preserved with proclin300 or sodium azide (as specified on the Certificate of Analysis), pH 7.3.

## Validation Data



Flow cytometry: 1X10<sup>6</sup> K-562 cells (Low Expression, left) and SH-SY5Y cells (right) were surface-stained with ABflo® 647 Rabbit anti-Human Nectin-1/CD111 mAb (A24989, 5 µl/Test, orange line) or ABflo® 647 Rabbit IgG isotype control (A22070, 5 µl/Test, blue line). Non-fluorescently stained cells were used as blank control (red line).



Flow cytometry: 1X10<sup>6</sup> SH-SY5Y cells were surface-stained with ABflo® 647 Rabbit IgG isotype control (A22070, 5 µl/Test, left) or ABflo® 647 Rabbit anti-Human Nectin-1/CD111 mAb (A24989, 5 µl/Test, right).