

A24991

Leader in Biomolecular Solutions for Life Science



CD130/gp130 Rabbit mAb

Catalog No.: A24991

Recombinant

Basic Information

Observed MW

Calculated MW

102kDa

Category

SMab Recombinant Monoclonal
Antibody

Applications

FC

Cross-Reactivity

Mouse

CloneNo number

ARC64569

Background

Contributes to interleukin-11 binding activity and interleukin-11 receptor activity. Involved in interleukin-6-mediated signaling pathway; intestinal epithelial cell development; and positive regulation of Notch signaling pathway. Acts upstream of or within several processes, including glycogen metabolic process; positive regulation of astrocyte differentiation; and regulation of Notch signaling pathway. Located in dendrite; external side of plasma membrane; and neuronal cell body. Is expressed in several structures, including alimentary system; brain; early conceptus; immune system; and reproductive system. Used to study rheumatoid arthritis and stomach cancer. Human ortholog(s) of this gene implicated in arteriosclerosis; hyper IgE recurrent infection syndrome 4; and hyperandrogenism. Orthologous to human IL6ST (interleukin 6 cytokine family signal transducer).

Recommended Dilutions

FC 1:100 - 1:500

Immunogen Information

Gene ID

16195

Swiss Prot

Q00560

Immunogen

Recombinant protein (or fragment). This information is considered to be commercially sensitive.

Synonyms

CD130; gp130; D13Ert699e; 5133400A03Rik; CD130/gp130

Contact



www.abclonal.com

Product Information

Source

Rabbit

Isotype

IgG

Purification

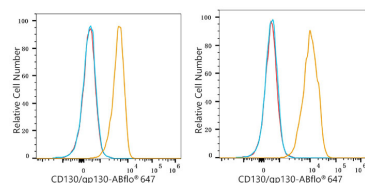
Affinity purification

Storage

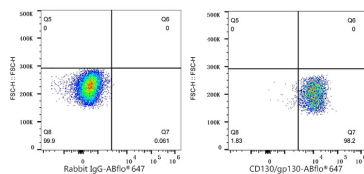
Store at -20°C. Avoid freeze / thaw cycles.

Buffer: PBS containing 50% glycerol and 0.05% BSA, preserved with proclin300 or sodium azide (as specified on the Certificate of Analysis), pH 7.3.

Validation Data



Flow cytometry: 1×10^6 Neuro-2a cells (Low Expression, left) and NIH/3T3 cells (right) were surface-stained with CD130/gp130 Rabbit mAb (A24991, 2 $\mu\text{g}/\text{mL}$, orange line) or ABflo® 647 Rabbit IgG isotype control (A22070, 5 $\mu\text{l}/\text{Test}$, blue line), followed by Alexa Fluor® 647 conjugated goat anti-rabbit pAb staining. Non-fluorescently stained cells were used as blank control (red line).



Flow cytometry: 1×10^6 NIH/3T3 cells were surface-stained with ABflo® 647 Rabbit IgG isotype control (A22070, 5 $\mu\text{l}/\text{Test}$, left) or CD130/gp130 Rabbit mAb (A24991, 2 $\mu\text{g}/\text{mL}$, right).