

A25005

Leader in Biomolecular Solutions for Life Science



# MAVS Rabbit mAb

Catalog No.: A25005

Recombinant

1 Publications

## Basic Information

### Observed MW

55kDa,70kDa

### Calculated MW

57kDa

### Category

Monoclonal Antibody

### Applications

WB,IHC-P,IF/ICC,ELISA

### Cross-Reactivity

Human,Mouse

### CloneNo number

ARC61547

## Background

This gene encodes an intermediary protein necessary in the virus-triggered beta interferon signaling pathways. It is required for activation of transcription factors which regulate expression of beta interferon and contributes to antiviral innate immunity.

## Recommended Dilutions

**WB** 1:2000-1:8000

**IHC-P** 1:100 - 1:500

**IF/ICC** 1:50 - 1:200

**ELISA** Recommended starting concentration is 1 µg/mL. Please optimize the concentration based on your specific assay requirements.

## Immunogen Information

### Gene ID

57506

### Swiss Prot

Q7Z434

### Immunogen

Synthetic peptide. This information is considered to be commercially sensitive.

### Synonyms

IPS1; VISA; IPS-1; CARDIF; MAVS

## Product Information

### Source

Rabbit

### Isotype

IgG

### Purification

Affinity purification

### Storage

Store at -20°C. Avoid freeze / thaw cycles.

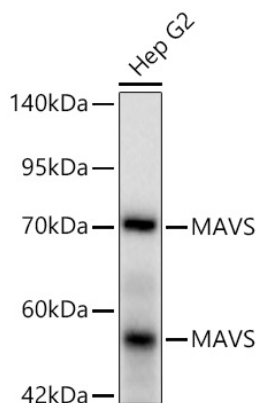
Buffer: PBS containing 50% glycerol and 0.05% BSA, preserved with proclin300 or sodium azide (as specified on the Certificate of Analysis), pH 7.3.

## Contact



[www.abclonal.com](http://www.abclonal.com)

## Validation Data



Western blot analysis of lysates from Hep G2 cells using MAVS Rabbit mAb (A25005) at 1:1000 dilution incubated overnight at 4°C.

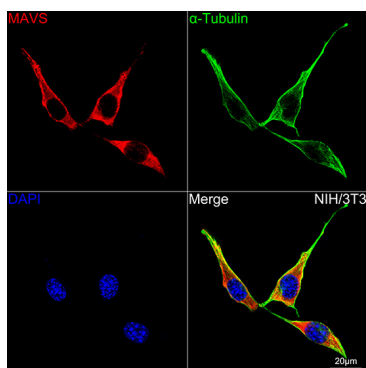
Secondary antibody: HRP-conjugated Goat anti-Rabbit IgG (H+L) (AS014) at 1:10000 dilution.

Lysates/proteins: 25 µg per lane.

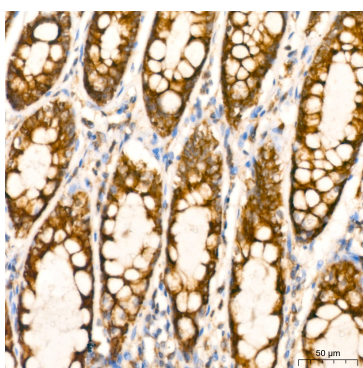
Blocking buffer: 3% nonfat dry milk in TBST.

Detection: ECL Basic Kit (RM00020).

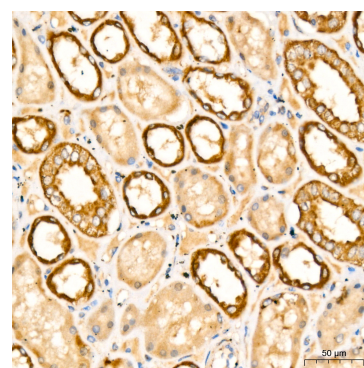
Exposure time: 20s.



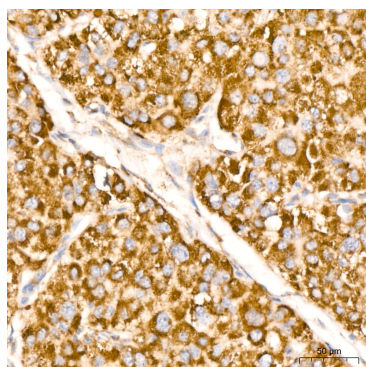
Confocal imaging of NIH/3T3 cells using MAVS Rabbit mAb (A25005, dilution 1:200) followed by a further incubation with Cy3 Goat Anti-Rabbit IgG (H+L) (AS007, dilution 1:500) (Red). The cells were counterstained with α-Tubulin Mouse mAb (AC012, dilution 1:400) followed by incubation with ABflo® 488-conjugated Goat Anti-Mouse IgG (H+L) Ab (AS076, dilution 1:500) (Green). DAPI was used for nuclear staining (Blue). Objective: 100x.



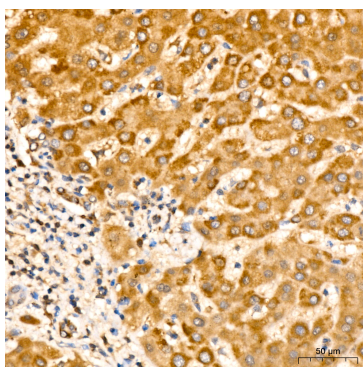
Immunohistochemistry analysis of paraffin-embedded Human colon tissue using MAVS Rabbit mAb (A25005) at a dilution of 1:300 (40x lens). High pressure antigen retrieval performed with 0.01M Citrate buffer (pH 6.0) prior to IHC staining.



Immunohistochemistry analysis of paraffin-embedded Human kidney tissue using MAVS Rabbit mAb (A25005) at a dilution of 1:300 (40x lens). High pressure antigen retrieval performed with 0.01M Citrate buffer (pH 6.0) prior to IHC staining.



Immunohistochemistry analysis of paraffin-embedded Human liver cancer tissue using MAVS Rabbit mAb (A25005) at a dilution of 1:300 (40x lens). High pressure antigen



Immunohistochemistry analysis of paraffin-embedded Human liver tissue using MAVS Rabbit mAb (A25005) at a dilution of 1:300 (40x lens). High pressure antigen retrieval

Validation Data

---

retrieval performed with 0.01M  
Citrate buffer (pH 6.0) prior to IHC  
staining.

performed with 0.01M Citrate buffer  
(pH 6.0) prior to IHC staining.