

A25015

Leader in Biomolecular Solutions for Life Science



OTC Rabbit mAb

Catalog No.: A25015

Recombinant

1 Publications

Basic Information

Observed MW

36-40kDa

Calculated MW

40kDa

Category

SMab Recombinant Monoclonal
Antibody

Applications

WB,IF/ICC,ELISA

Cross-Reactivity

Human,Mouse,Rat

CloneNo number

ARC65231

Background

This nuclear gene encodes a mitochondrial matrix enzyme. The encoded protein is involved in the urea cycle which functions to detoxify ammonia into urea for excretion. Mutations in this enzyme lead to ornithine transcarbamylase deficiency, which causes hyperammonemia.

Recommended Dilutions

WB 1:1000 - 1:5000

IF/ICC 1:50 - 1:200

ELISA Recommended starting concentration is 1 µg/mL. Please optimize the concentration based on your specific assay requirements.

Immunogen Information

Gene ID

5009

Swiss Prot

P00480

Immunogen

Recombinant protein (or fragment). This information is considered to be commercially sensitive.

Synonyms

OCTD; OTC1; OTCD; OTCase; OTC

Contact



www.abclonal.com

Product Information

Source

Rabbit

Isotype

IgG

Purification

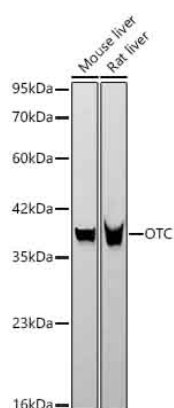
Affinity purification

Storage

Store at -20°C. Avoid freeze / thaw cycles.

Buffer: PBS containing 50% glycerol and 0.05% BSA, preserved with proclin300 or sodium azide (as specified on the Certificate of Analysis), pH 7.3.

Validation Data



Western blot analysis of various lysates using OTC Rabbit mAb (A25015) at 1:3000 dilution.

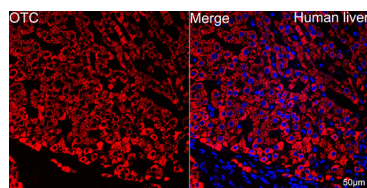
Secondary antibody: HRP-conjugated Goat anti-Rabbit IgG (H+L) (AS014) at 1:10000 dilution.

Lysates/proteins: 25µg per lane.

Blocking buffer: 3% nonfat dry milk in TBST.

Detection: ECL Basic Kit (RM00020).

Exposure time: 30s.



Confocal imaging of paraffin-embedded Human liver using OTC Rabbit mAb (A25015, dilution 1:200) followed by a further incubation with Cy3 Goat Anti-Rabbit IgG (H+L) (AS007, dilution 1:500) (Red). DAPI was used for nuclear staining (Blue). Objective: 40x. Perform high pressure antigen retrieval with 0.01M citrate buffer (pH 6.0) prior to IF staining.