

A25052

Leader in Biomolecular Solutions for Life Science



Bcl-2 Rabbit pAb

Catalog No.: A25052

1 Publications

Basic Information

Observed MW

26kDa

Calculated MW

26kDa

Category

Polyclonal Antibody

Applications

WB,IP,ELISA

Cross-Reactivity

Mouse

Background

Enables BH domain binding activity. Involved in several processes, including response to peptide; response to purine-containing compound; and response to vitamin. Located in cytosol; mitochondrial crista; and perinuclear region of cytoplasm. Used to study several diseases, including brain ischemia (multiple); end stage renal disease; gastric ulcer; intestinal disease (multiple); and status epilepticus. Biomarker of several diseases, including abdominal obesity-metabolic syndrome 1; brain disease (multiple); hypertension (multiple); intrinsic cardiomyopathy (multiple); and neurodegenerative disease (multiple). Human ortholog(s) of this gene implicated in several diseases, including carcinoma (multiple); hematologic cancer (multiple); intracranial aneurysm; prostate cancer; and urinary bladder cancer. Orthologous to human BCL2 (BCL2 apoptosis regulator).

Recommended Dilutions

WB 1:1000 - 1:5000

IP 0.5µg-4µg antibody for
400µg-600µg extracts
of whole cells

ELISA Recommended starting
concentration is 1
µg/mL. Please optimize
the concentration
based on your specific
assay requirements.

Immunogen Information

Gene ID

24224

Swiss Prot

P49950

Immunogen

Recombinant protein (or fragment). This information is considered to be commercially sensitive.

Synonyms

Bcl-2;

Product Information

Source

Rabbit

Isotype

IgG

Purification

Affinity purification

Storage

Store at -20°C. Avoid freeze / thaw cycles.

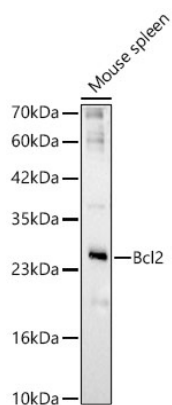
Buffer: PBS containing 50% glycerol, preserved with proclin300 or sodium azide (as specified on the Certificate of Analysis), pH 7.3.

Contact

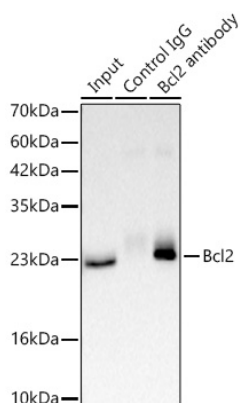


www.abclonal.com

Validation Data



Western blot analysis of lysates from Mouse spleen using Bcl2 Rabbit pAb (A25052) at 1:2000 dilution.
Secondary antibody: HRP-conjugated Goat anti-Rabbit IgG (H+L) (AS014) at 1:10000 dilution.
Lysates/proteins: 25 µg per lane.
Blocking buffer: 3% nonfat dry milk in TBST.
Detection: ECL Basic Kit (RM00020).
Exposure time: 45s.



Immunoprecipitation of Bcl2 in 300 µg extracts from mouse lung using 3 µg Bcl2 Rabbit pAb (A25052). Western blot analysis was performed using Bcl2 Rabbit pAb (A25052) at 1:500 dilution.