

A25086

Leader in Biomolecular Solutions for Life Science



# CD104/Integrin $\beta$ 4 Rabbit mAb

Catalog No.: A25086

Recombinant

## Basic Information

### Observed MW

Refer to figures

### Calculated MW

202kDa

### Category

SMab Recombinant Monoclonal  
Antibody

### Applications

IF/ICC,FC,ELISA

### Cross-Reactivity

Human

### CloneNo number

ARC64818

## Background

Integrins are heterodimers comprised of alpha and beta subunits, that are noncovalently associated transmembrane glycoprotein receptors. Different combinations of alpha and beta polypeptides form complexes that vary in their ligand-binding specificities. Integrins mediate cell-matrix or cell-cell adhesion, and transduced signals that regulate gene expression and cell growth. This gene encodes the integrin beta 4 subunit, a receptor for the laminins. This subunit tends to associate with alpha 6 subunit and is likely to play a pivotal role in the biology of invasive carcinoma. Mutations in this gene are associated with epidermolysis bullosa with pyloric atresia. Multiple alternatively spliced transcript variants encoding distinct isoforms have been found for this gene.

## Recommended Dilutions

IF/ICC 1:200

FC 1:100 - 1:500

ELISA Recommended starting concentration is 1  $\mu$ g/mL. Please optimize the concentration based on your specific assay requirements.

## Immunogen Information

### Gene ID

3691

### Swiss Prot

P16144

### Immunogen

Recombinant protein (or fragment). This information is considered to be commercially sensitive.

### Synonyms

CD104; GP150; JEB5A; JEB5B; CD104/Integrin  $\beta$ 4

## Contact

 [www.abclonal.com](http://www.abclonal.com)

## Product Information

### Source

Rabbit

### Isotype

IgG

### Purification

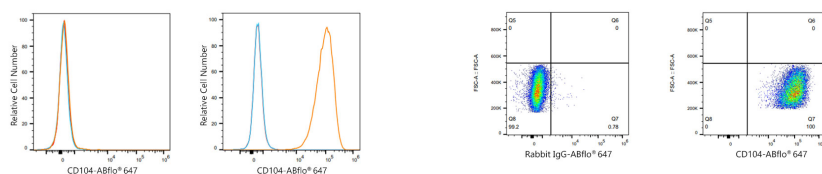
Affinity purification

### Storage

Store at -20°C. Avoid freeze / thaw cycles.

Buffer: PBS with 0.05% proclin300,0.05% BSA,50% glycerol,pH7.3.

## Validation Data



Flow cytometry:  $1 \times 10^6$  K-562 cells (negative control, left) and A431 cells (right) were surface-stained with CD104/Integrin  $\beta 4$  Rabbit mAb (A25086,  $2 \mu\text{g/mL}$ , orange line) or ABflo® 647 Rabbit IgG isotype control (A22070,  $5 \mu\text{l/Test}$ , blue line), followed by Alexa Fluor® 647 conjugated goat anti-rabbit pAb staining. Non-fluorescently stained cells were used as blank control (red line).

Flow cytometry:  $1 \times 10^6$  A431 cells were surface-stained with ABflo® 647 Rabbit IgG isotype control (A22070,  $5 \mu\text{l/Test}$ , left) or CD104/Integrin  $\beta 4$  Rabbit mAb (A25086,  $2 \mu\text{g/mL}$ , right).